

THE Charles Villager

Charles Village Civic Association

Baltimore, Maryland

Holiday 2011

Community Design Expands Waverly Commons Area

Each Saturday, the Waverly Farmers Market is a hub of activity. On a busy summer morning, shoppers push through crowded rows of produce stands while cars try to reach parking places in the interior of the public parking lot. During the week, this block is relatively sleepy, with local employees and shoppers taking advantage of the all day meters. The parking lot—its surrounding streets and nearby commercial buildings—certainly serve a purpose, but they aren't quite a hub of activity or area destination.

Believing that this block doesn't fulfill its potential, Greater Homewood Community Corporation (GHCC) proposed a collaboration with the Neighborhood Design Center (NDC) to create a concept design for improving the area. We are calling the proposed area Waverly Commons. In an effort to assess how the parking lot, adjacent private properties and the adjoining streets function, the NDC put together a team of traffic engineers and architects to look at the conditions and possibilities for the area. The Waverly Commons Master Plan would better connect the Farmers Market area to the Main Street businesses; making the Farmers Market and surrounding streets safer and more pleasant for pedestrians. This concept plan would also attract investment to the area.

The team looked at known problems. Cars enter between the market stalls, creating a dangerous auto/pedestrian interaction especially when the market gets busy. In general, bike and car parking is also in short supply with bike racks for only four bikes. Also, the intersection of 33rd & Barclay Streets and University Parkway regularly backs up in more than one direction and is dangerous for pedestrians every day.

Additionally, the parking lot is laid out inefficiently and lacks the electrical hookups that could be useful for market vendors and special events that might be held there. The market also fails to connect well with the nearby Greenmount Avenue shops. There is no place for market goers to sit, relax and eat sandwiches and other treats available on market days. But despite these drawbacks, the busy market and the heavily-used parking lot provide a lot of potential to build upon when designing improvements and making the area more of a destination.

Waverly Commons, continued on page 8

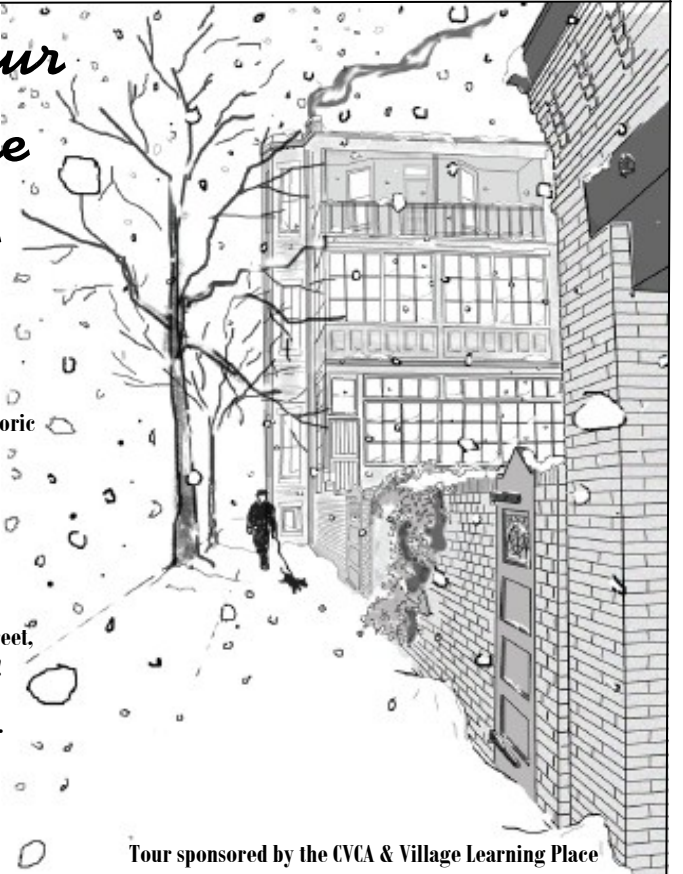
The Snowflake Tour of Charles Village Homes & Places

Sunday, December 18
Noon to 4 pm

Enjoy the wide array of wonderfully decorated, historic homes in Charles Village—
named one of America's most beautiful neighborhoods by *Travel & Leisure* magazine.

Tour starts at the Village Learning Place,
2521 St. Paul Street, and ends at
JHU's Homewood House Museum, 3400 N. Charles Street,
where your Tour ticket gets you free admission!

Tickets: \$15/person. \$12 with senior/student ID.
For advance Snowflake Tour tickets &
more information, go to:
<http://snowflaketour.info>



Tour sponsored by the CVCA & Village Learning Place



City Plans for 2 Years of Charles Street Reconstruction

Final Design of the Charles Street Reconstruction was completed in August 2011. The City advertised the contract in October 2011 for a Winter 2012 start of construction, which will significantly impact the Charles Village neighborhood and adjoining areas

until completion in 2014. The information that follows is from the Charles Street Reconstruction website, www.charlesstreet.mdprojects.com created for the City Department of Transportation by RK&K.

Charles Street, continued on page 12



CVCA MEETINGS

General Meetings

Wednesday, December 7, January 25, 7 PM
SS. Philip & James Church Hall
2801 N. Charles Street. Enter downstairs.

CVCA Board Meetings

Tuesday, November 15,
Wednesdays, December 21, January 18
Charles Village Community Benefits District Office
2434 St. Paul Street

Go to www.charlesvillage.net for info

WINTER SOLSTICE IN THE DELL

WEDNESDAY, DECEMBER 21

Wyman Park Dell • 3000 N. Charles Street

Gather round a warm fire
and enjoy live Celtic music performed by
traditional Irish musicians,

Jim Eagan & Friends

Be amazed by entertainers extraordinaire.

CHARLES VILLAGE CIVIC ASSOCIATION

The Charles Village Civic Association represents the interests of residents in working with businesses, institutions, and government to preserve, enhance, and promote the quality of living in the historic neighborhood of Charles Village in Baltimore City.

BOARD OF DIRECTORS 2011-12

Patricia McLane, President
cvcapresident@charlesvillage.net
410.889.1807

Eric Dymond, Vice President
ericdymond@hotmail.com
301.706.6930

John Fink, Treasurer
johnfink410@yahoo.com
410.366.4157

Leah Barron, Secretary
Leah.barron@yahoo.com
202.253.2146

Jennifer Erickson, Membership Sec.
membership@charlesvillage.net
410.243.3467

BOARD MEMBERS

Bud Beehler
Matthew Compton
Brendan Coyne
Sharon Guida
John Henderson
Charles Kelly III
Jeff Noll
Reginald Parker
Thomas Prevas
Sandy Sparks
John Spurrier
Ron Tanner



THE CHARLES VILLAGER

*Published five times per year by the
Charles Village Civic Association*

EDITORIAL BOARD

Sandy Sparks, Designer/Editor
srsparks@verizon.net
410.243.2156

Dawna Cobb
dawnacobb@gmail.com
410.410.366.6782

John Spurrier, Finances
charlesvillageradvertising@gmail.com
410.303.2400

Jennifer Burdick
jennifer.burdick@verizon.net
410.467.5462

Patricia McLane, President
cvcapresident@charlesvillage.net
410.889.1807

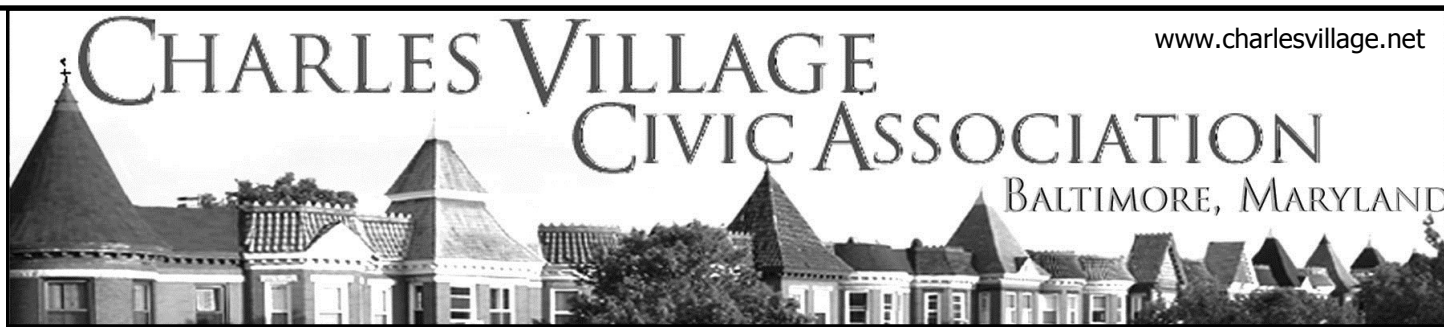
Gage Blair, Jo Ann Robinson

DISTRIBUTION
Rich Walther
Distribution Manager
rwalther@comcast.net

ADVERTISING
John Spurrier
Advertising Manager
charlesvillageradvertising@gmail.com

DEADLINE for copy and ads.
January 6 for Winter 2012 issue

THE CHARLES VILLAGER
2942 Guilford Avenue
Baltimore, Maryland 21218



President's Letter

Patricia McLane, CVCA President

Hello Charles Villagers!

The holiday season is rapidly approaching our neighborhood, and I for one can't wait! This is truly my favorite time of year, and living in Charles Village makes it easy to enjoy all that the season has to offer. From the kids running from house to house for tricks and treats at Halloween, to intimate family dinners at Thanksgiving, right down to the wonderful Snowflake Tour to kick off Christmas, this is a great time to take advantage of all our neighborhood has to offer.

The Snowflake tour is now in its second year and given how cold it's been lately, we might actually get to enjoy it during a winter wonderland of snow. The tour will be held on Sunday, December 18 from noon to four. Tickets can be purchased in advance, or on the day of the tour at the Village Learning Place at 2521 St. Paul Street. Fourteen houses participated last year due to Ron Tanner's wonderful organization and promotion of the event by his Snowflake Tour Committee, Jennifer Erickson, Shaun Carrick and John Lessner. So far we have 7 houses committed to decking themselves out for the season. What a wonderful way to get into the holiday spirit while catching up with friends and neighbors. And don't forget—your ticket includes free admission to the Homewood Museum, a true historic gem. Please check charlesvillage.net for more information.

As the new President of the CVCA, I encourage all of you to let me know how the holidays will be celebrated in your homes and blocks. I am also happy to promote events and encourage your neighbors to attend. Please email me at cvcapresident@charlesvillage.net

On a less than festive note, many of you came out for the Community Safety Forum sponsored by Councilman Carl Stokes and Councilwoman Mary Pat Clarke. There were representatives from a wide variety of organizations that care about Charles Village, including CVCA's Safety Committee, the CVCBD, Johns Hopkins University and the Northern District Police.

Neighbors expressed many concerns and generated some good ideas. But remember—good ideas need action to become good solutions, and I encourage you to reach out to our government officials and ask them to push for additional lighting on St. Paul Street, the extension of the Purple Line Circulator north of Penn Station to University Parkway, and more aggressive policing in the lower blocks of Charles Village.

And remember to be vigilant regarding your own property as well. Keep windows and doors locked and secured. Get to know your neighbors so they can look out for your safety as you will look out for theirs. If you see something suspicious, don't ignore it or hope it won't affect you, call 911 or flag down one of the many Johns Hopkins security officers that are out and

about. If we as a community stick together on the issue of safety, the benefits will be enormous. Children will be able to play safely, our property will remain secure, and our neighborhood will continue to be one of the best in the country.

That's right neighbors! The best in the country. For those of you who are not members of CVCA, you might have missed the email announcing our community as one of America's Most Beautiful Neighborhoods. In the fall edition of *Travel & Leisure*, Charles Village was recognized as an "inner city neighborhood that you could fall in love with." How true! *The New York Times* has also recognized our community by naming Baltimore's 12-mile historic Charles Street as one of the best scenic drives in the country, specifically mentioning the Baltimore Museum of Art and the Homewood House Museum.

So there is a lot to be excited about, a lot to be proud about, and a lot to do in our community. I can't wait to begin!

Patty McLane, CVCA President



Photo by Claudia Pererira

As Seen in *Travel & Leisure*

Charles Village, North-Central Baltimore

It's green with trees, painted in sprightly colors, and atypically blends turn-of-the-century, Baltimore-style row houses with yards and wide boulevards. In short, it's an inner-city neighborhood you could fall in love with. "Early in the city's history, they separated the ownership of the land under the house from the cost of the house," explains Jeff Soule of the American Planning Association. That small levy on property values "was almost like an early affordable housing program." The resulting mix of civically active residents—from blue-collar to students—supports live theater, shopping, the enviable Waverly Farmers' Market, and a museum with the largest Matisse collection on earth.

Go to www.travelandleisure.com/articles/americas-most-beautiful-neighborhoods/9 for the full-color.

Dea Andersen Kline

1922–2011

In the mid-1960s Dea Kline signed on as Director of Community Affairs on the Homewood campus of Johns Hopkins University. For the next 25 years, Hopkins administrator, Ross Jones, noted, Dea pushed the university toward “understanding how it was connected to the larger community.” At the same time, she reached out to Charles Village and beyond, encouraging the community to view the university as a resource and trust it as a neighbor.

More than once, Dea raised hackles that confronted her in both camps. She met them with a lovely smile and considerable political and social savvy. A founder of the Greater Homewood Community Corporation, she excelled in bringing people together, finding common ground, and leveraging resources for the larger good.

Whether hosting JHU Community Conversations breakfasts for distinguished representatives of various enterprises, or setting up summer camps for children from the least prosperous families in the area, Dea made the campus a welcoming place for its neighbors. She took a special interest in Barclay School. Barclay’s long-time activist principal, Gertrude Williams, recalled a lengthy list of projects that Dea initiated to benefit students, including a pioneering ecology curriculum based on students’ study of trees and vegetation on the Homewood campus and in Wyman Park. “Whatever situation Barclay found itself in, Dea would be there to support us,” Williams avowed.

Dea Kline died on July 24, 2011 in Germantown, Tennessee. Several Charles Villagers joined friends and family at a memorial service at Chestnut Grove Presbyterian Church in Phoenix, MD several days later. Its poignancy lingers, and Dea’s legacy lives on as we continue the work of creating community.

—Jo Ann Robinson



Barclay Principal, Jenny Heinbaugh, at the far left, led the unveiling of the Barclay School mosaic.

Mosaic Enhances Entrance to Barclay School

On September 22, a crowd gathered for the unveiling of a vivid historical mosaic surrounding the entrance to Barclay School. Harwood resident, Tamara Payne, was the artist guiding its creation with a Green theme running through the glass and ceramic art work. Barclay is a Maryland Governor’s Green School and has many connections with community garden walks, garden clubs and other greening initiatives. The Green motif also harks back to the woods and meadows that thrived in the area before human settlement and the summer estates that began to shape the landscape in the 19th century. A horse-drawn trolley represents the role of transportation in the history of settlement. The mosaic also depicts the old Oriole Baseball Park and the fire that demolished it. Two school buildings appear in the mosaic—the segregated School 115 (located on what is now the Waverly Farmers Market) where African American children were assigned from the end of the 19th century into the 1950s, and Barclay Elementary which opened in 1959.

PNC Bank and the Baltimore Office of Promotion and the Arts funded the mosaic project. Thanks to the grant-writing skills of former AmeriCorps Vista volunteer, Marc Francis, supported by community school coordinator, Kelly Oglesbee, both from Greater Homewood Community Corporation. Artist Natalie Kossack, whose medium is clay, assisted with the project, as did parents and children from Barclay and Margaret Brent and other neighborhood residents.

—Jo Ann Robinson

**Education.
Entertainment.
Involvement.
Our
Neighborhood
Matters.**

exhibitionsconcertssportslecturesdancetheatreastronomy

Neighborhood Matters is a free newsletter produced three times a year with an accompanying and regularly updated online version. *Neighborhood Matters* serves the area surrounding Johns Hopkins University’s Homewood campus, with community-related information. The online version is a great resource with additional and longer stories, and direct links to the many (mostly free) opportunities and resources at JHU.

<http://neighborhoodmatters.jhu.edu/> Phone: 443-287-9900

Neighborhood Matters

Connecting you to the
Homewood campus of
The Johns Hopkins University



**Waverly Main Street Celebrates
Wish Upon Waverly
Saturday December 10**

Visit www.waverlymainstreet.net
for all of the day's details.

**SHOP LOCAL all year long &
especially this HOLIDAY SEASON**

Stop by the Waverly Main Street Office at 427½ Merryman’s Lane

Contact Waverly Main Street Manager Ebony Edwards at
heythere@waverlymainstreet.net and 443.838.6271

Poetry at Barnes & Noble

St. Paul Street resident, **Michael Fallon**, gave a reading from his two new books of poetry at the Johns Hopkins Barnes & Noble on September 27. The little area dedicated to readings was packed with Villagers and friends of Michael and his wife **Ruth Fallon**. Members of my reading group attending included former Villager, **Peta Richkus**. Also there were Michael's long time Village friends and neighbors **Marilyn O'Connor, Bill Johnson, Jennifer and Brad Erickson, Carol Anderson, Joe Magar, Ned Humphrey and Peter Wang**.

Charles Village in Travel & Leisure

We are right up there with Boston's Back Bay and Chicago's Oak Park. See www.travelandleisure.com/articles/americas-most-beautiful-neighborhoods/9. See page. 2. Recently, there was a lovely picture of a row of Painted Lady row houses against a dark gray sky. A reader submitted the photo in the *Baltimore Sun* as part of its *Day in the Life of Baltimore* photography project.

Abell Centennial stories continue...

While *The Charles Villager* has 5,000 copies in circulation each issue, folks who live here e-mail stories of interest to former residents. A current resident sent **Kathleen Cochran Conneen**, who grew up in the Abell community, the last issue that highlighted the Abell Centennial with its interesting history and diversity of residents. Kathleen now lives in Castle Rock, Colorado, but as a child lived at 329 E. 30th Street with her seven younger siblings and parents, **Mary Gugerty Cochran and John Cochran**. Her grandmother, **Anna Gugerty**, lived at 3014 Abell Avenue and when she died in 1976, Kathleen's uncle **Tom Gugerty** bought the house and lived there for many years. Kathleen married her husband, also a Baltimore native, in 1968 and has not lived in Baltimore since. She reports that they "return every few years and tour the neighborhood, including the alleys! Our adult children and grand-children listen to our stories of sledding on Abell Avenue, kick-ball at Barclay Elementary School and walking 7 city blocks to school, crossing three major streets during morning rush hour! But I assure them we did wear shoes!" Kathleen attended SS. Philip & James School, where her 4th Grade teacher with the beloved **Mrs. Marie Lombardi!** Kathleen remembers caroling at her house and eating the delicious goodies that Marie often shared with neighbors. I gave Kathleen contact information for **Eileen Canzian**, who now lives in her 30th Street house.

Village Parents. Are you the parent of small children? Do you know about www.villageparents.wordpress.com? This group of parents is dedicated to making Charles Village a great place to live and raise kids. Check out their website and what they are up to. We raised our kids in Charles Village



Since 2003, *Eye of the Tigers* Nate Sweeney and Peggy O'Leary, residents of Charles Village since 2003, stood on top their car at the corner of Guilford Avenue & 30th Street., to cheer on Marathon runners until the last one at 3 p.m..

along with a good number of other families, many who are still here. Charles Village was a terrific place to grow up; our kids—now in their early 20s—learned to use mass transit, took part in neighborhood clean-ups, played soccer and t-ball in the Charles Village Rec League that Village parents started, lived among people of diverse backgrounds and played in the neighborhood parks and alleys.

Holiday shopping season ramps up.

Consider buying local. Once again the **Charm City Craft Mafia** will hold its annual Holiday Heap, a one-day craft fair offering a wide selection of crafts. The fair will take place on Saturday, December 3 from 10 a.m. to 5 p.m. at St. John's Church, 2640 St. Paul Street. Shoppers at Holiday Heap will find one-of-a-kind, unique handmade gifts from over 60 vendors, juried from applicants nationwide. Products range from jewelry, art, paper goods, and ceramics to hand printed apparel, stuffed toys and comic books. All items are sold by the artists themselves, so come meet the hands behind great local art. Charm City Craft Mafia members include **Bowerbox Press, Carlybird Weaves, City Sparrow, Cotton Monster, Found Studio, illegible ink, MeepCraft, Phamper-sand Press, Pink Kiss Pottery, Red Prairie Press, Spaghetti Kiss and Sugar Paperie**. There will also be crafting demonstrations and Baltimore's most popular food truck, **GrrChe**. For a full list of vendors, information on the fair and more information on the Charm City Craft Mafia and its talented members, please visit www.charmcitycraftmafia.com.

31st Street resident, Tim Munn, sent me a photograph of a sign—Public Park—on the fence surrounding the JHU owned green space at 33rd & St. Paul Street, wondering if I knew anything about it. My reliable JHU source, Salem Reiner, directed me to www.baltimorebrew.com/2011/10/10/in-charles-village-picnic-protesters-turn-wasted-land-into-public-park/. According to the online journal article, 30 or so folks entered the space and used it as a park, sitting on blankets and tossing a frisbee. Folks inter-

viewed for the *Baltimore Brew* story described their actions as a statement against those who supported development projects that never came to fruition with the end result being a prime piece of property that is being put to no good use. This group has no relation to the Occupy Wall Street protests.

St. Paul Street resident for 35 years, Kent Waters, passed away on August 27 after a long battle with cancer. A Charles Village stalwart, Kent patrolled Village streets one evening a week as part of the Neighborhood Walkers program. Many Charles Villagers, past and present, attended his beautiful memorial service at the Loyola Alumni Memorial Chapel on October 23: **Carol Anderson Austra, Brian Barrett, Gene Carson, Jennifer and Sophie Elisseeff, Nick Frey and Julie Leslie, Jerry Gordon, Vonnice Gowe, Cassandra Orem and 8-year old Mikayla Orem-Gowe**, who gave spoke eloquently of her friend Mr. Kent, **Ed Hargadon and Val Kuciauskas, Eddie Hall, Betty Hill, Birdie Howes, Jacques Kelly, Carlene Moscott, Sandy Sparks, Emil and Kathleen Volcheck**. Former Charles Villagers included **Andrea Van Arsdale and Jeff Krimmel, Dave Dagdigian, Anne Staige Davis Hodges, Virginia LeCrone, Patricia and Leo LePage, Raina and Michael Wilson, Joyce, John and David Maclay, Raina and Michael Wilson**. See memories of Kent on page 7. Condolences to his wife, Sandy.

Welcome to new neighbors, O.J. and Syreeta Dowdy, who have moved to the 2900 block of N. Charles Street. Their neighbors, (I am one), are thrilled to have new home-owners on the block. O.J. works in cyber security for the Navy and Syreeta is an investigator for the IRS. They have a sweet 250 lb. mastiff named Major.

On the topic of trash, I was delighted with a capital D, to learn at the most recent meeting of the CVCA that the City is poised to aggressively cite property owners who do not properly dispose of trash. Whether they will do this depends on community association members' wish for such a crackdown.

The City contacted each of the Village's neighborhood association presidents to get their feedback on this offer. To everyone I say, "Please, please support this crack down!"

Guilford Avenue rocks again for the Marathon

It was a gorgeous sunny but breezy day for the 11th Annual Baltimore Running Festival, which includes the marathon, a half marathon, a marathon relay and a 5K run. All races but the 5K come across 33rd Street to Guilford, up to 29th Street and over to Howard before heading south. **John Spurrier** set up his DJ equipment on **John and Beverly Fink's** porch in the 3000 block of Guilford and blasted soca music from the Caribbean for hours. The Eye of the Tiger team was out at 30th Street with some friends who were shaking pom poms and jumping up and down urging the runners on. The Eye of the Tiger folks, **Nate Sweeney and Peggy O'Leary**, former residents of the 2900 block of Guilford, who now live on the 2600 block of North Calvert Street, come back every year to encourage the runners. For a video of the marathon along Guilford Avenue, check out northbaltimore.patch.com/articles/guilford-avenue-embraces-marathon#video-8122940. I spent hours on the course waiting for my husband **Paul Hulleberg** and friends who were running. I chatted with spectators **Leah Barron and her son Noah, Thain Moyes**—an Iron Man triathlete, **Dana and Ralph Moore** and **Ed Hargadon**.

Villagers in the City Paper's Best of Baltimore edition. Kudos to **Josh Fruhlinger** for winning the Best Funny Twitter Feed. Find him on Twitter @jfruh. **Doreen Bolger** was tagged as The Best DoGooder. She is Director of the BMA and was recognized for her tireless efforts to "to bring outside grant money, collectors and recognition to the young working artists in the community." **Meet 27**, a restaurant and bakery at 27th & Howard Street won the best Gluten-Free category.

Snowflake Tour participants are needed for the annual tour of houses decorated for the holidays. This year's event is Sunday, December 18. If you are interested in putting your house on the tour, please contact Ron Tanner at rtanner@loyola.edu. It's a great way to motivate yourself to get ready for the holidays.

Find Past Issues of The Charles Villager on www.charlesvillage.net under the Villager Archives tab.

Please send news to: Dawna Cobb, dawnacobb@gmail.com or 2943 N. Charles Street, Baltimore, MD 21218



CVCBD Builds Block Captain Program

Block Captains are an integral part of our community and the updated CVCBD program and allow residents to take a leadership role within their neighborhood and street. They have a chance to take on specific issues or problems on their block. Block Captains work with the Coordinator of Community Safety Programs, Diana Mitchell and AmeriCorps Community Organizer, Allison Wilhite, to educate their neighbors on various safety programs and block projects.

The Block Captain Program is a fantastic opportunity to:

- ▶ build a stronger community
- ▶ create safer neighborhoods,
- ▶ strengthen community unity
- ▶ act as a crime deterrent.

Block Captains attend a series of trainings that cover the basic how-to's of being a Block Captain, Block Captain responsibilities and a direct connection to local resources for block projects and activities.

Recently, CVCBD held their first Block Captain training. Ten residents from various neighborhoods within the Benefits District attended and are now ready to lead their blocks to victory with clean, green and safe projects and activities.

Any interested resident within the Benefits District may participate. The next training is the Block Projects & Event Planning— November 15, 6:30–8:30 p.m. at the CVCBD Office.

Block Captains, sign up today!

Charles Village and Abell residents— please contact Diana Mitchell at Diana@charlesvillage.org

Hardwood and Old Goucher residents— please contact Allison Wilhite at Allison@charlesvillage.org

Or you may call the CVCBD office at 410.235.4411, extension 16



Andrew Stiller gives his speech for Quad 1 elections on October 11 in the SS. Philip & James Parish Hall.

CVCBD Rat Abatement Program Works

For several years residents have expressed concern about the large population of rodents in Charles Village. Beginning in July, the Benefits District started a one year Rat Abatement Program to address this concern. With a grant from Johns Hopkins Neighborhood Fund, the CVCBD contracted with Regional Pest Management to place 480 Rat Bait Stations throughout the alley ways of the District to curb the rodent populace.

As of November 1, the Benefits District's Clean team has disposed of 281 dead rodents. Many others die in their burrows. To make this program a success, businesses and residents have to participate by using proper trash storage and by placing their trash out on their proper days. Residents also must make sure that their grass is cut, weeds removed from their properties and all rat burrows closed and sealed. They should also report to Baltimore's 311 line any illegal dumping or improper trash disposal they observe. When making reports to 311, all calls are confidential so residents can feel safe in getting matters resolved. The CVCBD Sanitation Team will continue their education efforts on sanitation matters by issuing reminders, creating informational flyers, providing educational forums during community association meetings and working with residents with chronic sanitation issues in their neighborhoods to resolve the matter as quick as possible.

If you have any, comments, questions or concerns with the CVCBD Rat Abatement program, please feel free to contact us at 410-235-4411 or email us at sanitation@charlesvillage.org.
—David Hill



Zinhle Zungu, Estelle Young, Kevin Ghaffari, Jahi Faw, Christie Bell and Catherine Voss were among the COR volunteers at the Mayor's Cleanup Kickoff on October 22. CVCBD staff Telina Jenkins and Diana Mitchell (right) organized the event.

CVCBD Hosts Mayor's Cleanup Kickoff

The CVCBD hosted the kickoff location for the Mayor's Fall Cleanup on Saturday, October 22. Residents, volunteers and staff gathered on the corner of 22nd Street & N. Charles Street. Deputy Mayor Christopher Thomaskutty offered praise and encouragement for continuing efforts to keep Baltimore clean and trash free.

Volunteers from the Tuerk House, COR martial arts studio and residents throughout the Benefits District picked up trash, cleaned tree wells and filled dumpsters with large bulk items. Newly-trained Block Captains from the CVCBD program organized residents on their blocks to tackle cleaning up alleys, tree wells and vacant lots. The cleanup was a huge success for all involved. Many celebrated at both 27th Street & Maryland Avenue and The Calvert Street Park with a BBQ Cook Out. They met each other and will continue good neighbor communication.

The Benefits District would like to thank the residents, The Tuerk House, COR, CVCBD Block Captains, CVCA, Old Goucher Association, Harwood Community Association and Abell Improvement Association.

—Diana Mitchell, Coordinator Community Safety Programs, CVCBD
410.235.4411, extension 16
410-235-5544 Fax

CVCBD Quad Election 2012 Results

On October 11th the Benefits District held its annual public annual Quad elections for the four Quad representatives to the Board of Directors. The following residents were elected and will serve beginning January 2012:

Quad 1: ANDREW STILLER

Quad 2: FRANK RICHARDSON

Quad 3: THAYN MOYES (re-elected)

Quad 4: KIRSCH JONES (re-elected)

To find your Quad boundaries, go to:

http://charlesvillage.org/images/district_map/map_cvcbd_quadrants.gif

MEET 27

COME JOIN US FOR DINNER



\$ 5.00 OFF OF \$35 ORDER.
BRING THIS COUPON.

Not valid with any other offer. Excludes Tax and Tip.

127 W 27TH STREET BALTIMORE, MD 21218
(CORNER OF HOWARD & 27TH STREET)

OPEN: SUN-THUR 5-10
FRI-SAT 5-11
TEL: 410 585 8121

WWW.MEET27.COM

**BYOB, GLUTENFREE, VEGAN AND
MEAT EATERS -ALL WELCOME**



VILLAGE LEARNING PLACE

2521 St. Paul Street • 410.235.2210

VLP Library Hours

Monday	Noon– 8 pm
Tuesday	10 am– 6 pm
Wednesday	Noon– 8 pm
Thursday	Noon– 6 pm
Friday	10 am– 6 pm
Saturday	Noon– 4 pm
Sunday	Closed

Find out about free programs & events
at: www.villagelearningplace.org!

Visit our online library catalog at:
<http://vlp.kohalibrary.com/>

Bring your laptop to check out
WiFi at the VLP Library

Liesje Gantert, Executive Director

VLP Calendar

Adullescent Effort presents a Bad Movie and a Crappy Craft— Thursday, December 15, 8 to 10pm

Did you love trivia nights at the VLP? Get ready for an old school movie nights and awesomely crappy crafts with the Adullescents! BYOB! 21+, please.

Snowflake Tour— Sunday, December 18, Noon to 4 pm

The annual Charles Village Snowflake tour will once again kick off at the Village Learning Place. Tickets: \$15 & \$12 for students/seniors, can be purchased in advance or at the VLP on the day of the tour. Treat your friends and family to a festive afternoon in Baltimore's historic Charles Village.

Pre-GED Class— Mondays & Wednesdays, 9 am to Noon

The VLP and Baltimore City Community College offer FREE Pre-GED classes. Classes are held in the VLP library. Learn basic math, reading, and writing skills.

Tots Tuesdays — 1st & 3rd Tuesdays, 10:30 to 11:30 am

An interactive storytime for toddlers and their parents and caregivers, during which families enjoy stories, song and dance, and snacks. We provide an opportunity for you to interact with your child in a unique way that encourages language development and literacy.

Senior Tea — 2nd Tuesdays, 11 am to Noon

Seniors are invited for free performances or presentations, and refreshments.

2nd Wednesdays at the VLP — 2nd Wednesdays, 7 to 9 pm

A series of free lectures, concerts and special arts events. This series spotlights local talent and provides a first-rate cultural experience for adults

December 14— Nola Richardson and Kevin Dixon-Payne, *Baroque and Renaissance Music*

January 11— MD Humanities Council presents, *Margaret Brent of Maryland*

Baltimore History Evenings — 3rd Thursdays, 7 to 9 pm

Our renowned series, presented in partnership with the Baltimore City Historical Society, returns January 20 for a third year of talks by local historians and raconteurs. Check www.villagelearningplace.org for the full schedule.



Computer users in the VLP Library enjoy browsing in comfortable new chairs.

THANK YOU

2011 Read Between the Wines sponsors—

Barnes & Noble Johns Hopkins

Cabot Cheese

Fusco Financial Associates

Johns Hopkins Federal Credit Union

Jonathan Melnick Auctioneers

Modern Babies & Children Magazine

P-B Home Care Agency, Inc.

Union Memorial Hospital



M&T Bank



St. Mark's Lutheran Church

1900 St. Paul Street † 410-752-5804

stmarkscelebrates.org

An Inclusive Community

Join Us in Celebration...

Mass: Sundays at 11 a.m. &
Thursdays at 6:30 p.m.

Holiday Services

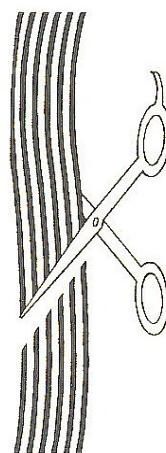
†Thanksgiving Eve Mass, 6:30 p.m.

†Christmas Eve Festival Mass &
Reception, 7:30 p.m.

†Christmas Day & New Year's Day
Mass, 11 a.m.

Free Parking on Lot at
St. Paul & 20th Streets

Just
Cut
It!



*Make an appointment
before heading home for
the holidays.*

410-235-6614

3100 St. Paul Street

Christmas Bazaar

December 10, 11 am to 3 pm

St. John's in the Village Parish House
3009 Greenmount Avenue

Gift tables with knickknacks, books, child's
clothing, toys & white elephants for sale.

Homemade cookies, candy &
light refreshments

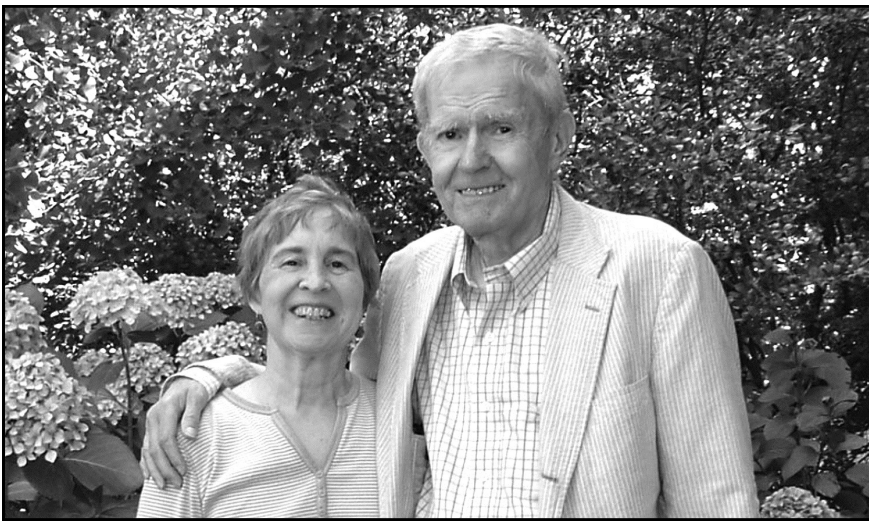
Charm City Craft Mafia
presents

The 10th Indie Craft Fair Holiday Heap

One-day shopping event featuring the
country's best independent crafters

Saturday, December 3
10 am to 5 pm. Free.

St. John's, 2640 St. Paul Street



Sandy and Kent Waters on his 75th birthday visit to Portland, Oregon in 2008.

Memories of a Friend

About 15 years ago, a band of dog walkers gathered to do a cleanup in our beloved Wyman Park Dell. One day, a gray-haired gentleman approached me with two Chelseas. He introduced himself and wanted to know how and what he could do to help. This began my long friendship with Kent Waters.

Kent lived at 3013 St. Paul Street with his wife, Sandy, also a dedicated dog lover and long-time volunteer at Barclay School. He had walked in The Dell for years, and he wanted to be part of the continued upkeep of this wonderful park in our neighborhood. Kent became a board member of the Friends of Wyman Park Dell and remained on the board until two years ago. The Dell was just another feather in his cap.

Over the years, Kent did the monthly cleanups with zest. He loved being with young college students and painstakingly explained trimming, mulching and planting trees—they loved him. Kent picked up tons of trash and emptied more trash cans during the Charles Village Festivals than any of us. With vigor he planted trees and pulled out the dreaded poison ivy, as the only one not allergic to it. I could always count on his support and good cheer. No job was too large or too small. Kent loved being useful and productive.

He was a good friend, the consummate gentleman, and a great neighbor. Charles Village will certainly miss him, and so will I. —Betty Hill

Everett Kent Waters

1932–2011

I met Kent quite some time back when I joined the Thursday night Charles Village walkers, a group of which Kent and Gene Carson were founding members. While the year is for me uncertain, it was, as Kent remarked, long enough ago that my son Sam, who is now a student at Carlton College in Minnesota, was still carried on my shoulders. From my first walk, on an incredibly rainy evening, throughout the many hours that we were together, Kent always entertained us with observations of the neighborhood, stories of his life and family, the progress of favorite sports teams, and, of course, introductions to every dog in the neighborhood.

Each member of our Thursday night group, I found, had if not an assigned role, then a function to perform. Gene was the navigator, the person who reported malfunctioning street lights. He was the expert on streetcars and trains, and all mass transit related matters. I carried the mobile phone. Kent was our storyteller, the glue, I believe, that held us together and the individual who kept us coming back. Initially we walked to perform a community function, to help our neighbors, but I think we continued to walk every Thursday, over these many years, in large part because we enjoyed Kent's company. And, what Kent made clear during every one of our walks was that he enjoyed our company as well.

So Kent was a great friend. Enthusiastic in his greetings, solicitous of our well-being, a person we were lucky enough to meet, by chance, simply because we were in the right place at the right time. Kent embodied what is wonderful about living in a neighborhood like Charles Village. Any trip to the video store or Eddie's might be interrupted by a chance encounter, and an interesting conversation. Kent cared about and worked to improve his community and city, was generous and progressive in his politics, and understood the importance of art in life, especially music. Kent was connected both to people and life through wide ranging interests: space and geology, sports, politics, all animal creatures, and always his family, which he spoke of lovingly and with great pride.

Thanks for talking about Sandy's daughter, Staige Davis Hodges, and her life from Friends to Duke to the West Coast, for telling us about her daughters and husband. Thanks too for the stories of growing up in DC, of your time in the military, and of going to hear jazz in NYC with your brother. I remain especially envious that you heard Monk on one of those trips. Thanks, too, for having faith in the Orioles. Like Auden, you realized the importance of speaking the language of friendship often, and you can be assured that within the circle of our affection, you have no double.

—Jeff Krimmel, Memorial Service Eulogy



RESIDENTIAL BROKERAGE

John Spurrier

*Let me help you find a good deal
on a Charles Village home*

38 Village Square
Baltimore 21210
410.235.4100 (office)
410.303.2400 (mobile)
jspurrier@cbmove.com



**WINTER SOLSTICE
IN THE
DELL
WEDNESDAY, DECEMBER 21**

Wyman Park Dell • 3000 N. Charles Street

**Gather round a warm fire
and enjoy live Celtic music performed by
traditional Irish musicians,
*Jim Eagan & Friends***

Be amazed by entertainers extraordinaire.

FREE! 7 TO 9 PM

**Mulled cider, hot chocolate & cookies
on sale for your refreshment
thanks to John Shields and Gertrude's at the BMA**

**Marshmallows free for roasting & candy canes for the
young at heart**

Presented by the Friends of the Wyman Park Dell



**www.WymanParkDell.org
www.facebook.com/wymanparkdell**

The design team has proposed several important changes to the Farmers Market block:

- ▶ Closure of Merryman's Lane between 32nd Street and Brentwood Avenue where a pedestrian plaza may be created.
- ▶ Reversal of direction of Merryman's Lane (to north/south) between 33rd Street and Brentwood Avenue.
- ▶ A new parking lot entrance from Brentwood Avenue that will be accessible from both Merryman's Lane and 32nd Street.
- ▶ Reconfiguration of the parking lot to create a few more spaces.
- ▶ Improvements to traffic patterns at the intersection of 33rd & Barclay Streets.
- ▶ Consideration of a traffic circle/roundabout at 33rd & Barclay.
- ▶ Tables, bike racks, electrical hookups, improved paving, and other improvements to the public spaces.
- ▶ Pedestrian improvement along 32nd Street that would improve access to businesses on Greenmount Avenue.

In addition to the publicly owned parking lot, the NDC design team took a look at potential uses for the privately-owned land on the east side of Brentwood Avenue. This property is currently for sale and includes buildings that have garage-type construction and vacant space where buildings have been demolished. The team laid out a plaza that includes part of the Merryman's Lane right-of-way with new buildings proposed for the remaining parcel. One idea is to build an indoor farmers market building on the smaller north parcel for vendors to lease during the week. The larger lot size on the south parcel would lend itself to a building with a wide variety of potential uses.

The draft master plan was presented on October 8. Over 40 comments about the plan from Charles Village, Abell, Waverly Village and Oakenshawe neighbors and stakeholders were received at the meeting. A final version that should be available around the end

of the year. Will include those comments and considerations. The October 8 PDF presentation is available at: www.greaterhomewood.org.

Currently unfunded, the Waverly Commons Master Plan is intended to spark discussion of both private and public investment.

This project is made possible with funding from the Bank of America Charitable Foundation. GHCC would also like to thank the volunteer team that has worked with us and the NDC on the project. The team has been unusually creative and dedicated.

—Peter Duvall, *Neighborhood Revitalization Manager*, 443.277.6277
pduvall@greaterhomewood.org

Merryman's Lane— Once a Major Country Road

Merryman's Lane, running past the house (Clover Hill), came into being in 1801 or 1802 when Joseph Merryman sold part of his land to Charles Carroll of Carrollton, who built Homewood as a wedding present for his son. The lane was cut through, another family letter explains, in order to give the Carroll's access to their new property. — William Stump, *Baltimore Sun*, October 23, 1949

One of the oldest historic country roads in the village of Waverly gets its name from a 1688 land grant by Lord Baltimore to Charles Merryman, whose son John built a house and started a farm on an estate called Clover Hill, located on the site of today's Episcopal Cathedral of the Incarnation.

Today only one block retains the name of Merryman's Lane from the old York Turnpike, now Greenmount



Avenue, to the intersection of Barclay and East 33rd Street by the Waverly parking lot (Waverly Farmers Market) and the Waverly Branch of the Enoch Pratt Free Library. The rest of Merryman's Lane is now University Parkway, which continues past the Johns Hopkins Homewood Field to the Roland Park Water Tower. In the 1800s, the Merryman's Lane connected the York Road Turnpike to the Falls Road Turnpike. Merryman's Lane was also the site of a segregated public school prior to integration.

For more history on our commercial corridor, visit the historic marker on the Olmsted-inspired 33rd Street median near Greenmount Avenue. Get a free copy of *Village life goes on along Old York Road*, a self-guided historic walking tour at the Waverly Library. To revisit the village past, read Waverly's own Lizette Woodworth Reese who wrote about Merryman's, Tinges and Vineyard Lanes in *A Victorian Village* and *The York Road* as well as in her books of poetry.

The new Waverly Main Street (WMS) office at 427½ Merryman's Lane is behind Sea Blue, once a Little Tavern, which remains a fine example of Early Diner architecture. The landlord has agreed to allow the community to beautify the rear yard of the office with a garden. Look for an announcement about a meeting to design and plan this green space.

Visit www.waverlymainstreet.net for WMS office hours. Contact WMS Manager Ebony Edwards at 443.838.6271 or heythere@waverlymainstreet.net. —Joe Stewart, *Waverly Main Street Board Member*, and *Waverly historian*



Join CVCA Today &
You will receive Charles Village NEWS—
weekly e-mails

November 4

E-Mail Message from CVCA President Patricia McLane—

Hello Charles Villagers!

I am so excited to announce that TWO Charles Village not for profit organizations are receiving \$200,000 grants from Bank of America. **Maryland New Directions** is located at 2700 N. Charles Street www.mdnewdirections.org/mnd/ (employment services) and the **Village Learning Place** is located at 2521 St Paul Street www.villagelearningplace.org/ (education) are the beneficiaries of Neighborhood Excellence Initiative Grants.

Please see the attached article for further information regarding this wonderful achievement: articles.baltimoresun.com/2011-10-27/business/bs-bz-boa-baltimore-grants-20111027_1_bofa-nonprofit-groups-village-learning-place

And don't forget to attend our General Membership meeting on December 7, when the Village Learning Place will be presenting their exciting new plans!

See you for
Tuesdays with Gertie!

Many of our most popular specials
priced at \$12 each.

And don't miss

Wine on Wednesdays

All wines half price after 4pm.

GERTRUDE'S

JOHN SHIELDS CELEBRATES
REGIONAL CHESAPEAKE CUISINE
AT THE BALTIMORE MUSEUM OF ART

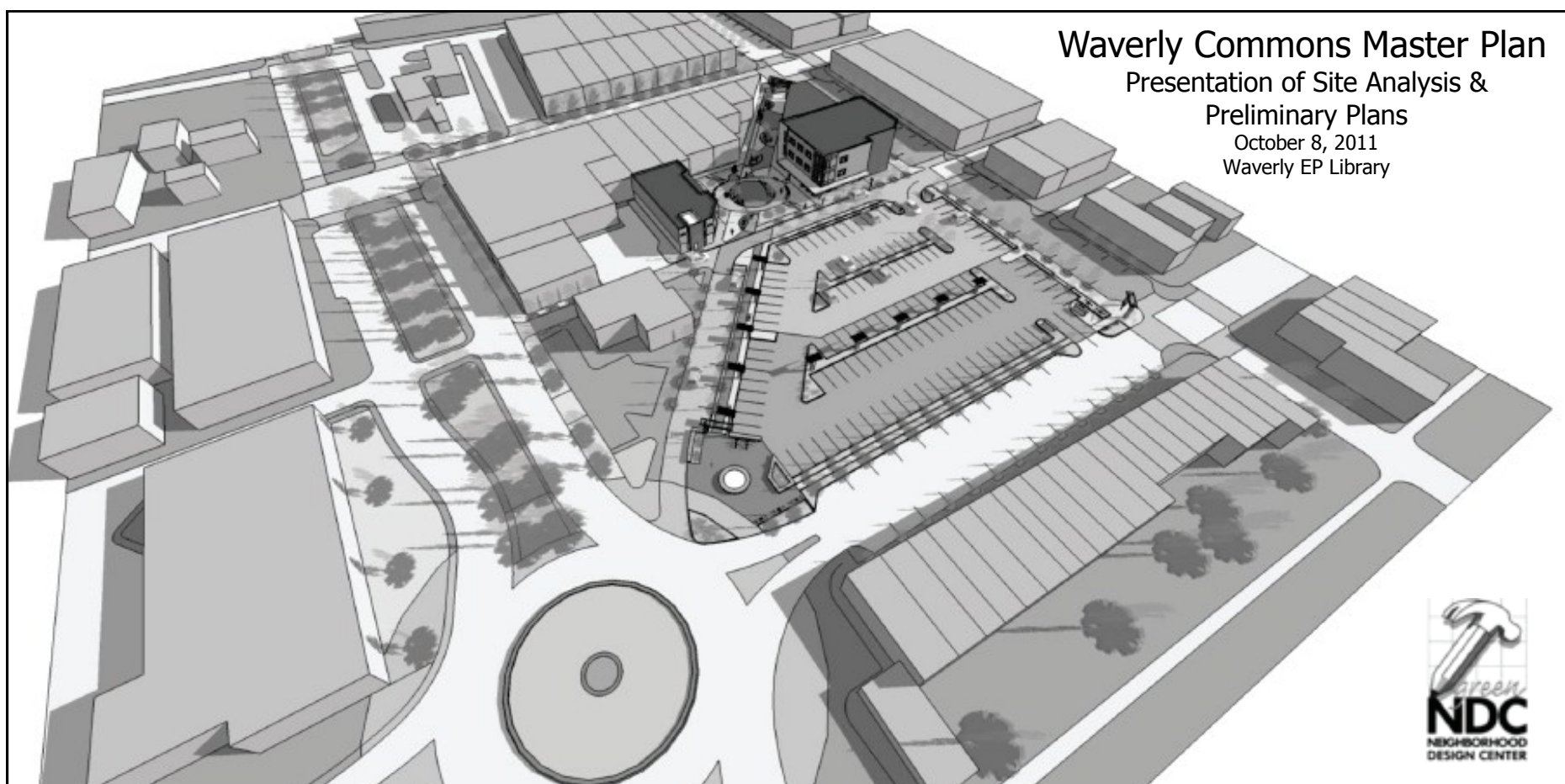
LUNCH • DINNER • WEEKEND BRUNCH
TUESDAY THRU SUNDAY

**PROUD TO BE PART OF THE
CHARLES VILLAGE COMMUNITY
SINCE 1998!**

410.889.3399

ON-LINE RESERVATIONS AT:

WWW.GERTRUDESBALTIMORE.COM



Waverly Commons Master Plan
Presentation of Site Analysis &
Preliminary Plans
October 8, 2011
Waverly EP Library

This bird's eye view shows the focus area of the Waverly Commons Proposed Concept Master Plan created by the community, Waverly Main Street and Greater Homewood community Corporation in collaboration with Neighborhood Design Center volunteers. In this drawing, Barclay Street extends to the right and 33rd Street boulevard to the left. Merryman's Lane extends from the a traffic circle through the center of the drawing to a new plaza. The buildings on either side of the plaza would replace existing buildings. The circle shown in drawing is one of two options for improving traffic flow at the intersection of Barclay and 33rd Streets.

The complete PDF presentation is available at: http://www.greaterhomewood.org/wp-content/uploads/2011/10/Short_Presentation-for-Oct.-8-Waverly_2011.10.08.pdf.

Design Team Members

Kristen Humphrey (Neighborhood Design Center)
Edward J. Myers, P.E. (Kittelson & Associates, Inc.)
Tilghman Shamer III, Assoc. AIA, LEED AP BD+C (Sanders Designs)
Rudy López, Jr., Architect I (AECOM)
Mandy Palasik, LEED AP BD+C, Associate AIA (Archplan Inc.)
Mayra I. Filippone, RLA, LEED AP BD+C(STV Inc.)
Pete Jenior (Kittelson & Associates, Inc.)

Autograph Playhouse Seeks Funding

I started the company, **Autograph Playhouse**, because of my passion for the arts and love for theater. Growing up near Washington DC, I recently retired from government service and decided to make my dreams real life by purchasing the Showtime Theatre, formerly The Playhouse Theatre.



9 W 25th Street Baltimore, MD 21218

The **Autograph Playhouse** mission is to provide a venue for a locally-based performing artistic organizations, repertory companies and community groups, to express their art with an expectation of excellence and professional quality. We are seeking new material and a fresh perspective in playwriting, directing, acting and performances for the enjoyment of the extended Charles Village neighborhood.


I am currently fundraising (\$19,000) to install a green and energy-efficient heating and air condition unit. The facility needs a 20 ton (HVAC) unit to replace the HVAC unit left for many years unattended and in disrepair. I am hoping to open the theatre when a heating unit is essential. The theatre is nearly booked for the upcoming fall/winter season with a variety of plays, concerts and film. These shows may not be possible without help.

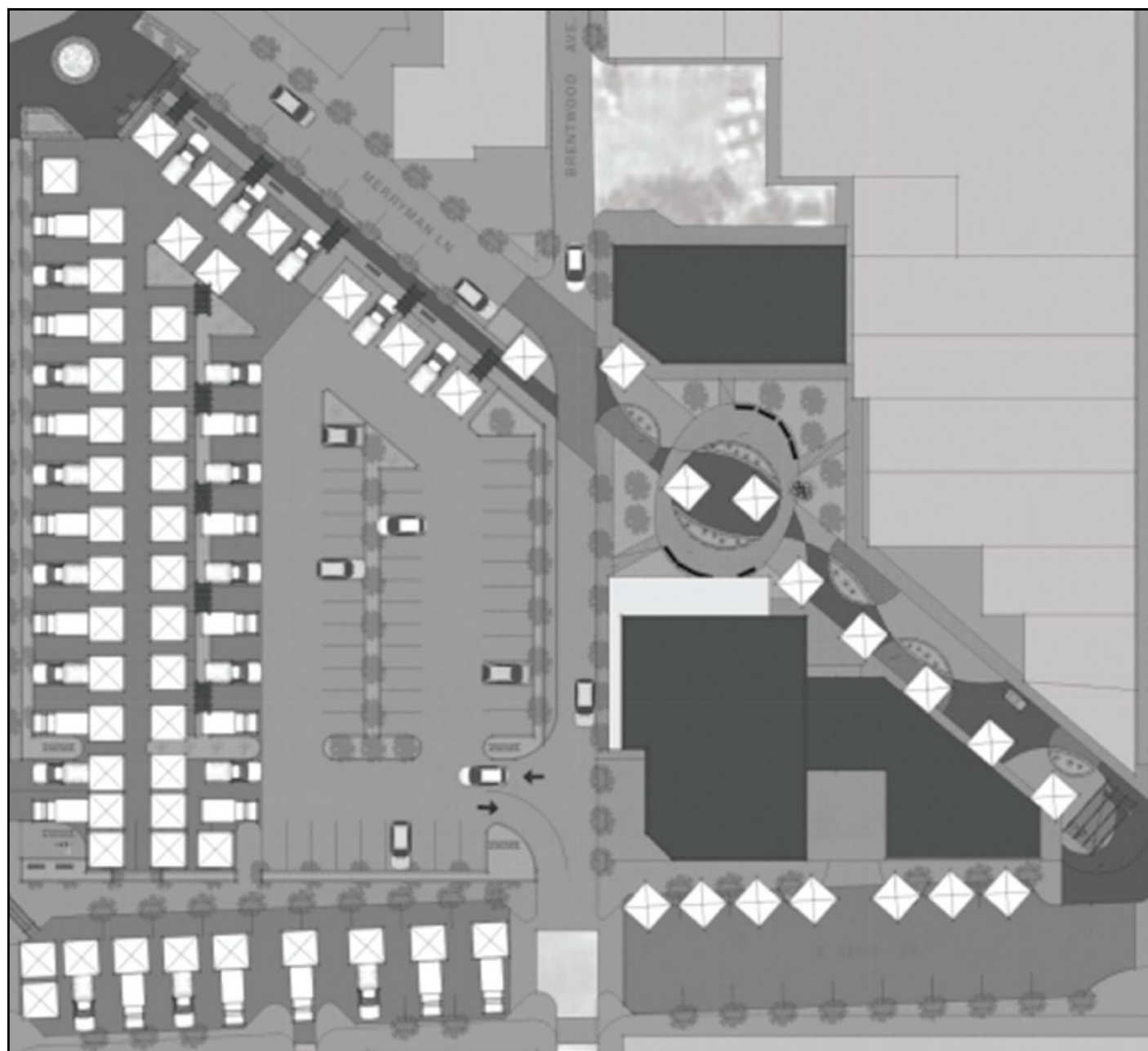
The **Autograph Playhouse** is a Maryland non-profit organization. Contributions can be made online: www.autographplayhouse.org or by checks payable to: Autograph Playhouse and mailed to: Autograph Playhouse, 9 W 25th Street, Baltimore, MD 21218. For more information please e-mail me at abilliety@aol.com. Thank you your kind, generous support.

Billie D. Taylor, Founder/Executive Director

BARNES & NOBLE

JOHNS HOPKINS

<p style="text-align: center;">Baltimore Book Club</p> <p style="text-align: center;">November 14th <i>Noah's Compass</i> by Anne Tyler</p> <p style="text-align: center;">December 12th <i>The Immortal Life of Henrietta Lacks</i> by Rebecca Skloot</p> <p style="text-align: center;">January 9th <i>What the World Will Look Like When All The Water Leaves Us</i> by Laura van den Berg</p>	<p>Join us Mondays at 7:30 PM to discuss works from local authors and national best-sellers.</p> <p style="text-align: center;">All Baltimore Book Club titles are 20% off at the store.</p> <div style="text-align: center;">  </div>
<p>Visit us at www.johns-hopkins.bncollege.com to see our full schedule of author events and signings.</p>	
<p>3330 St. Paul Street Baltimore, MD 21218 (410) 662-5850</p>	



This schematic drawing shows one of two layouts for expanding the Waverly Farmers Market and allow safer circulation of people and vehicles.

Join the CVCA, shop locally & SAVE!

Become a CVCA Business Member!

Contact Jennifer Erickson
CVCA Membership Secretary
membership@charlesvillage.net
www.charlesvillage.net

For discounts offered, your CVCA Membership Card must be presented at time of purchase. Offers subject to change without notice.



CVCA Works for You!

- ▶ Land Use— Zoning & Liquor Board Hearings
- ▶ Residential Permit Parking Areas RPP 12/12A & RPP 37
- ▶ Greening— Tree Stewards
- ▶ Beautification— Charles Village Garden Club
- ▶ Safety— Neighborhood Walkers
- ▶ Sanitation
- ▶ Traffic Calming
- ▶ *The Charles Villager* newsletter
- ▶ *Charles Village Cooks: A Taste of The Village* cookbook

Join Today

CVCA Business Members

A+A Lead Paint Inspections
Anderson Automotive
Baltimorean Apartments
Charles Village Disc. Liquors
Charles Village Pub
Copy Cat Printing
Darker Than Blue
Dominion Ice Cream

Donna's
Eddie's Market
ezStorage
Freshii
Future Care Charles Village
Just Cut It
Maxies Bar & Grille
Niwana
Randall & Sonnier, LLC
St. Paul Cleaners
Trinidad Gourmet
Wheely Good Smoothies

Non-Profit Members

Franciscan Center
Greater Homewood Community Corporation
JHU Center for Social Concern
Tuerk House

Jennifer Burdick

The Baltimore Museum of Art
Print by Print—a stunning exhibition of 29 series of prints from the 15th century Albrecht Durer's series of the Apocalypse to the recent series of amazing etchings *Open House* by Andrew Raftery. Works on paper cannot be displayed permanently and can only be seen for short periods. This exhibition, developed with four students from JHU and MICA, is a rare opportunity to explore the museum's collection of over 60,000 prints. Through March 25.

Bring the kids on Sundays from 2–5 pm. There is always something fun to do, whether inspired by printing or the upcoming holidays—how about learning to design a Thanksgiving Tablescape. General Information: 443.573.7100; Box Office: 443.573.1701 or visit www.artbma.org.

The Walters Art Museum
Lost and Found: The Secrets of Archimedes tells a remarkable story. In Jerusalem 1229 AD, the greatest work of the Greek mathematician Archimedes were erased and overwritten with a prayer book by a priest called Johannes Myronas. In 2000, a project by a team of experts at the Walters began to read these erased texts. They recovered Archimedes' secrets, which re-wrote the history of mathematics, and discovered entirely new tests from the ancient world. Through January 1. **Every Saturday and Sunday** from 10 am to 3 pm, the Walters hosts Drop-In Art Activities in the Family Art Center. Projects in November will focus on Text Messages— all sorts of hidden messages, and in December escape to Island Getaways. For more on these exhibits and other special programs at the Walters, visit www.thewalters.org.

The Maryland Institute College of Art (MICA)
The Common Object. Zeuxis Still-Life Painters Association and MICA have brought together 60 paintings that incorporate the same everyday object, a dishtowel. Meyerhoff Gallery in the Fox Building, 1303 West Mt. Royal Avenue. December 1–

The Walters Art Museum Online Collection
Here, you can find thousands of artworks, from around the world and across the centuries. Get detailed information about the artworks, including conservation and exhibition histories. Download high quality digital images. Search, tag and create an online art collection. This project is supported in part by an award from the National Endowment for the Arts. Discover this 6th Century BC (Archaic) Greek, Folded Sheet Gold.



March 11. After seeing this interesting exhibit, walk next door to the Leidy Atrium and Falvey Hall lobby and shop at the MICA Art Market which features unique gifts made by 250 students, Alumni, Faculty and Staff. December 7– 10, 10 am – 6 pm

Patricia and Arthur Modell Performing Arts Center at the Lyric Opera returns to Baltimore!!! The first production of Lyric Opera was Verdi's *La Traviata* in early November. Mozart's *The Marriage of Figaro* follows on March 9 & 11. 410.900.1163 or www.Modellpac.com.

The Baltimore Symphony Orchestra
Holiday Cirque de la Symphonie at the Meyerhoff Symphony Hall, Acrobats, contortionists, juggler, and more performing above and around the Orchestra in this holiday spectacle set to the music of Tchaikovsky, and other holiday favorites. December 7, 9, 10 & 11. Also at the BSO for the family, *Cinderella* with Bob Brown Puppets and Prokofiev's score. Saturday, December 3 at 11am. Tix: 410.783.8000 or www.BSOmusic.org.

The Hopkins Symphony Orchestra will host two upcoming concerts: A selection of works with Jason Love as Guest Conductor. Free. **Sunday, November 20** at 3 pm, Debussy, Vaughan Williams, and Tchaikovsky with the Goucher Chorus and the JHU Choral Society.

Saturday, December 3 at 8 pm
Bunting-Meyerhoff Interfaith Center, 3509 North Charles Street. Tickets: 410.516.6542 or www.jhu.edu/jhso

Also at JHU, the Shriver Hall Concert Series will feature The Piatigorsky Memorial Concert. Steven Isserlis, cello, and Connie Shih, piano, will perform a program of works by Mendelssohn, Liszt, Ades and Franck. Sunday, December 4 at 5:30 pm. Free.

The Common Ground on the Hill
From McDaniel College in Westminster. A new concert series performed at Brown Memorial Woodbrook Presbyterian Church, 6200 North Charles Street. For 17 years, Common Ground has celebrated and shared traditional music and arts. Walt Michael and Co. present an **Annual Holiday Concert**. December 16, 8 pm. 410.857.2771 or www.commongroundonthehill.org

Center Stage
David Mamet's *American Buffalo*. Can three would-be con men carry out the stealth of a rare coin? Mamet's biting use of the English language is quite a contrast to the malaprops of the first Center Stage production this season. Caution: Adult language. Through December 11

The Holiday Cabaret featuring Felicia Carter, St. Veronica's Youth Steel Drum Orchestra, a klezmer band, and...a gospel choir. December 15–18. For details and tix visit www.centerstage.org or call the Box Office 410.332.0033.

Stoop Storytelling will celebrate family at Center stage with *We are Family: Stories* about the ties that bind. Created by Charles Villagers, Laura Wexler and Jessica Henkin, Stoop Stories are complete with sound effects, live music from local musicians (including Felicia Carter and Amy Shook), and true, personal tales. Monday, November 21. For details and tix visit www.centerstage.org or call the Box Office 410.332.0033.

Everyman Theater
1727 North Charles Street
Enjoy Noel Coward's witty language in *Private Lives*. Watch divorcees Amanda and Elyot run into each other on their honeymoons with their new spouses. Fireworks begin. Through

December 4. Box Office: 410.752.2208 or www.everymantheatre.org.

Heralds of Hope Theater
120 W. North Avenue
Tennessee Williams' *Cat on a Hot Tin Roof* with an all-African-American cast. This new theater company's mission is to enrich the community by sustaining the tradition of theater and contribute to its future viability and vitality. Through November 26. 410.997.3997 or www.heraldsfhopetheatercompany.com

The Strand Theater Company
1823 N. Charles Street
World Premiere of *Glitter and Spew* by Alison Luterman. A trio of short plays, developed during the Friends & Neighbors Festival, features a meditation on media exposure, shame and personal responsibility in 21st century America. The Strand showcases women artists and has been doing terrific productions. Runs December 2–17. www.strandtheatercompany.org.

Fells Point Corner Theater
251 South Anne Street in Fells Point
Continues the season with Douglas Carter Beane's *The Little Dog Laughed*. Can an actor's agent keep his little secret in the closet in this rollicking production? Nov. 11 – Dec. 11. www.fpct.org, or 410.276.7837

Audrey Herman Spotlighters Theatre
817 St. Paul Street
One of my favorite musicals, *The Fantastics* by Harvey Schmidt and Tom Jones. Try to remember a better tale of love lost and then found set to memorable melodies. November 18–December 18. Tickets: 410.752.1225 or www.spotlighters.org.

The Vagabond Players,
806 South Broadway in Fells Point
A joyful and highly talented cast for Stephen Schwartz' and John-Michael Tebelak's *Godspell*. Thru November 13. Tickets 410.563.9135 or www.vagabondplayers.org

Theatre Project
45 West Preston Street
Hosts quite a variety of performance art from dance, music and theater. One of the new and remarkable theater groups, is Iron Crow Theatre Company. *I want to be a Gay Icon!* written and performed by Sarah Lynn Taylor. November 10–12. Check out other amazing productions at Theatre Project. 410.752.8558 or www.theatreproject.org.

Baltimore Concert Opera
At the Engineer's Club
La Cenerentola (Cinderella), by Gioacchino Rossini on Friday, December 2, 7:30 p.m., & Sunday, December 4, 3 p.m. Tickets: 443-844-3496 or www.BaltimoreConcertOpera.com.

E-Mail info about new art venues and productions to: jennifer.burdick@verizon.net or call 410.467.5462.

HUMANISM
EQUALITY
DIVERSITY
COMMUNITY

ALL ARE WELCOME
SUNDAYS AT 10:30 AM
306 W. FRANKLIN ST., SUITE 102
410-581-2322

bmorethical



Humanist weddings and other life passage ceremonies, adult education, and more.

THE BALTIMORE ETHICAL SOCIETY

www.bmorethical.org
ask@bmorethical.org
[@bmorethical](https://twitter.com/bmorethical)

A humanistic religious fellowship united by belief in the worth and dignity of each individual

An Overview

Extending from South Baltimore north to the Baltimore Beltway, Charles Street is one of Baltimore City's premier streets. The 12-mile long street is now listed as a Maryland Scenic Byway. The North Charles Street boulevard portion, between 29th Street and University Parkway, is lined with residential, commercial, academic/institutional, and religious organizations and is one of the more beautiful sections of this important street. Although the current design by Wyatt and Nolting completed in the early 1900s was not without controversy (reference *Charles Street, A Boulevard Revisited* by David Holden for the Friends of Maryland's Olmsted Parks and Landscapes, Inc., 2000), the street has continued to serve increasing land use, traffic, pedestrian and parking demands.

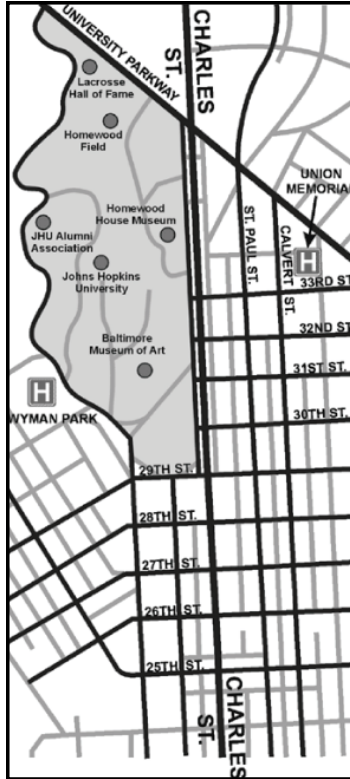
Landmarks along the boulevard portion of North Charles Street include the Wyman Park Dell, Charles Village, Baltimore Museum of Art, Johns Hopkins University and several religious institutions. Unfortunately, the current plan and lane utilization dating from an early 20th Century design, when combined with today's traffic volumes, speeds and heavy pedestrian crossings, merits serious reassessment and re-evaluation. Master Plans previously prepared for Charles Village, the Baltimore Museum of Art, and Johns Hopkins University also identified the need to improve North Charles Street.

Charles Street Website

The previous Charles Street Reconstruction project website has been updated and revised to present the completion of Final Design activities in August 2011. Please use this website for access to current information, project updates and previous studies and reports. Comments are welcome. See the extensive website at www.charlesstreet.mdprojects.com.



In early November, the City began construction of this roundabout at 32nd and Guilford Avenue for the Guilford Avenue Bicycle Boulevard.



Guilford & 32nd Roundabout Arrives

On a recent trip to the Book Thing via 32nd Street, I noticed orange barrels in a cordoned off circle at E. 32nd Street and Guilford Avenue. Hoping that the street was open to traffic, I approached the intersection and happily noticed that the orange barrels were protecting a newly constructed circle, a traffic roundabout I presumed.

I soon learned that this circle is the start-up of Phase 1 along Guilford Avenue for the City Department of Transportation's Bicycle Boulevard from Downtown. The roundabout will thankfully show traffic down and make this intersection much safer for pedestrians, bicyclists and motorists. The roundabout eliminates the need for Stop signs at the intersection. Plantings in the middle will add a touch more green to our neighborhood. Look for Guilford Avenue roundabouts at 22nd and 24th Streets.

Where Guilford Avenue ties into Mt. Royal Avenue, Phase 2 of the Jones Falls Trail will be constructed, which will allow cyclists to continue onto the Inner Harbor. For planning details about this first City Bicycle Boulevard, go to the Winter 2011 *Charles Villager PDF* (page 9) in the Villager Archive on www.charlesvillage.net.

—Dawna Cobb

ROOFING FLAT ROOF SPECIALIST TAR & ALUMINUM ROOF COATINGS

New Torchdown Rubber Roofs
Emergency Repairs
Same Day Service Leak Repairs
Silicone Treatment for Brick
(443)538-2104

Have your roof repaired,
recoated or replaced
before the winter storms arrive

JAMES MCDONALD ROOFING
M.H.I.C. #80778

See our ad in the Baltimore Yellow Book



Ben Frederick III, CCIM
Charles Village
Commercial-Investment
Specialist for 27 years.



Ben Frederick Realty, Inc.

410-435-5040

www.BenFrederick.com



For Sale: Mount Vernon
7 Apts \$395,000



For Sale: 2509 Charles St
Office + 3 Apts
Across from CVS

Back-in angle parking will be in effect during reconstruction of the Charles Street boulevard sections from 29th Street to University Parkway. Residential Permit Parking (RPP) will continue to be in effect. Local traffic will have access throughout construction. See www.charlesstreet.mdprojects.com for more information.

Foam Polystyrene (Styrofoam) Recycling Begins at DPW Sisson Street Center Only

On November 4, Dart Container Corporation and the Baltimore City Department of Public Works introduced Foam polystyrene (Styrofoam) Recycling!

Styrofoam Recycling is NOT a curbside recycling program.

The new Northwest Citizens Convenience Center, 2840 Sisson Street, (see page 14 for information) will be the ONLY SITE accepting CLEAN ONLY polystyrene (#6) foam foodservice items— foam cups, foam plates, and foam egg cartons), as well as foam protective packaging typically used to protect consumer goods and electronics. Please follow these simple instructions:

- ▶ Make sure CLEAN foam has the #6 symbol
- ▶ Rinse cups/containers
- ▶ No straws, lids, tape or stickers, foam peanuts or insulation material
- ▶ Must be brought in see-through plastic bags
- ▶ FREE bags made available on site by Dart while supplies last.

Dart is working to collect a variety of foam products and help Baltimore City divert waste from disposal. Through this, and similar programs nationwide, the company is helping to raise awareness of the recyclability of foam. The collection and transport of materials are provided at no charge to the City— eliminating costs associated with this recycling expansion.

Curbside Bulk Collection is Still FREE.

Currently, Baltimore City's DPW Solid Waste provides residents bulk trash collection at no additional charge. The service will remain FREE through June 30, 2012. A fee for service WILL NOT be instituted on January 1. Budget challenges continue to drive the evaluation of all services for efficiency. The City is reviewing Bulk Collection and considering a fee for this premium service. A fee will not be implemented before July 1, 2012 and notice will be given in advance.

To schedule bulk collection, residents must call 311 *at least three days in advance* of their communities' regular bulk collection day, and place no more than three items for pick up. **Bulk Collection Day in Charles Village is the 4th Monday.**

Follow City Recycling on Twitter: @BaltimoreDPW and join the Baltimore City Department of Public Works Facebook Fan Page!

—Celeste Amato, 410.545.6541 or: Celeste.Amato@baltimorecity.gov

FREE ESTIMATE

RELIABLE SERVICE

Serving Charles Village,
Remington & Hampden
for over 38 years

RICKY LARICCI ROOFING & HOME SERVICES

Painting | Drywall | Siding | New Decks
Hot Asphalt Roofing | Torch-down roofing
Gutters & Downspouts | Shingle Roofing



2921 Huntingdon Avenue
410-404-0162
MHIC #98703

All types of Roof Repairs



PRIMARY CARE THAT SPECIALIZES IN COMMUNITY



Superior Care, Convenience and Community Connection are our commitment to you. At Linden Medical Group, we offer you more than access to a Primary Care Physician, we offer a stronger doctor-patient relationship. A relationship that provides you with preventive care, care for minor injuries and management of chronic health issues.

And when you need specialty care, Linden Medical Group connects you to an extensive network of Specialty Physicians. We're Linden Medical Group, giving you primary and specialty care to help you lead a healthier life.

CALL FOR AN APPOINTMENT
at one of our locations right in your neighborhood.

ARMORY PLACE
827 Linden Ave.
Baltimore, MD 21201
410-225-8800

HERITAGE CROSSING
312 Martin Luther King, Jr. Blvd.
Baltimore, MD 21201
410-225-8855
OPENS THIS FALL

BOLTON HILL
1501 W. Mount Royal Ave.
Baltimore, MD 21217
410-225-8855



WWW.MARYLANDGENERAL.ORG/FAMILY

NW Sanitation Yard on Sisson Street Opens as Super Citizen Convenience Center

Mayor Stephanie Rawlings-Blake joined Director Alfred H. Foxx on October 18 to re-open the **Northwest Sanitation Yard, 2840 Sisson Street**, as a **Super Citizen Convenience Center**. This event highlighted changes to the facility, including easier access for residents to dispose of trash and recycling, and as the future home of a permanent hazardous waste collection container. The new drop off features a raised permanent platform that lets residents to drive up and easily drop their waste into appropriate roll-offs positioned around the outer edge of the platform— 6 for trash and 2 for recycling.

The site also features a container for a permanent household hazardous waste drop off program, which began November 4. Residents can bring household hazardous waste to this super center on selected weekends of the month. The program will run annually April through November. Watch for your 2012 DPW calendar for exact dates and times. This new monthly collection schedule will allow citizens to properly dispose of hazardous household materials more conveniently— no longer needing to wait for special scheduled collection events. Finally, residents will be able to recycle Styrofoam or polystyrene at Sisson Street ONLY. *Do NOT put Styrofoam out with your single stream recycling!* Cups or containers with a 6 symbol can be recycled. No straws, lids, tapes or stickers and no peanuts. Please bring the Styrofoam in clear plastic bags. Bags will be available FREE while supply lasts.

Sisson Street hours: Monday thru Saturday, 9 am to 5 pm. Summer hours from Memorial Day to Labor Day: 9 am to 7 pm

Hazardous material collections: Friday & Saturday— December 2 & 3. Check your DPW calendar for 2012 dates!

Materials FOR Hazardous Waste Collection— automotive fluids, car batteries, household batteries, PCBs, laser toner cartridges, fluorescent light bulbs, creosote products, coal tar products, rust removers, floor care products, glycols, insecticides, weed killers, herbicides, pesticides, oven cleaners, oil-based paint, varnishes & stains, wood preservers, paint thinners, solvents, turpentine, kerosene, gasoline, furniture stripping products, pool chemicals, propane tanks, welding tanks/cylinders, helium tanks, mercury items such as thermometers and switches.

Hazardous materials NOT Collected— asbestos, ammunition, explosives, fire extinguishers, fireworks, industrial wastes, medical wastes, radioactive materials, electronics trash/garbage/rubbish.

Latex paint is NOT hazardous material! Simply dry out with kitty litter or another absorbent and put in your regular trash collection.

Citizen Drop-Off Centers— Regulations & Policies

Baltimore City residents ONLY. Materials must come from your primary home.

Landlords can only haul materials from City property in which they reside.

ONLY passenger cars, unmodified vans, unmodified minivans or unmodified pickup trucks no larger than ¾-ton.

Commercial vehicles, rented vehicles, modified pickup trucks, vans or minivans MUST GO to the Quarantine Road Landfill.

ONLY 2 loads per day and 5 loads per week. Pickup truck loads cannot exceed the truck bed. For all other vehicles, ONLY 8 trash bags or an equivalent amount per load.

Bag yard waste— tree limbs cannot exceed 3 feet in length and 4 inches in diameter.

Full loads of building materials are accepted ONLY at the Quarantine Road Landfill.

Materials accepted— household trash, furniture, other bulk items, appliances, scrap metal, cans, glass, plastics, paper, cardboard, tires, electronic devices, Styrofoam, used oil, and yard waste. A minimal amount of building material may be accepted at the convenience center. Full loads of building materials may only be accepted at the Quarantine Road Landfill, 6100 Quarantine Road. Citizen Drop-Off Hours: Monday thru Saturday, 9 am to 5 pm

Improving Quality of Life at FutureCare Charles Village

Our staff prides itself on providing quality clinical and comprehensive rehabilitation services. Our full time Nurse Practitioner works closely with your physicians, nurses and therapists to design and carry out an individual care plan based on your personal and health care needs.



Our healthcare services include but are not limited to:

- Around-the-clock nursing services
- Comprehensive rehabilitation services
- On-site palliative care
- Nutritional services
- Bariatric care
- Wound care management
- Pain management
- IV therapy
- Pharmacy, laboratory and radiology services
- Nurse practitioner
- Case management and social services
- Therapeutic recreational activities
- Discharge planning services

For more information or to schedule a tour of our facility, please contact us today at 410-889-8500.

www.futurecarehealth.com
Phone 410-889-8500

FutureCare
CHARLES VILLAGE
A FutureCare Health & Management Facility



Attach Photos with City's New 311 App

The new 311 app for Baltimore City: Have you heard about it? Anyone with a smart phone can download the app for free. It lets you report the same sort of problems as usual by phone or on-line EXCEPT now you can attach a photo!

I felt like a kid in a candy store after learning about this app. No sooner had I heard about and downloaded it was I out on my block taking a picture of a house whose occupants had dumped trash in front of the house! Our trash is always collected in the alley, so this was really awful. I uploaded the photo, added the street address and other relevant information and pressed *send*. It felt so good! I read recently that app has already been downloaded about 2,000 times. Folks are snapping and clicking away— giving the City plenty of work to do. —Dawna Cobb

Zipcar Proves Easy for Out-of-Town Trips

The Zipcar proved a convenient way to get to suburban Philadelphia, leaving Baltimore at 7 am for Chestnut Hill College, for the Second Annual Philadelphia Brotherly Love Cup Quidditch tournament. Five team members decided to use a Zipcar to travel to and from our destination and found a car at the Zipcar destination on the Homewood campus.

The concept is simple. There are four steps to the Zipcar usage process outlined on www.zipcar.com: join, reserve, unlock and drive. Once you have joined and reserved a car, you turn up at one of the many Zipcar destinations in Baltimore and access the car with a membership card. It's a self-service system. For students, it's ideal. Using Zipcar means you only pay for the times you actually need a car. It's without all the hassle you'd expect with an owned car— you pay no car insurance and Zipcar provides a clean car with gas for a 180 miles/day allowance. This makes the service cost-effective and convenient.

Zipcar not only benefits students, it's available to the community as well. A word of warning— plan the amount of time you realistically need the car for, because if delays occur and you arrive back late for check-in, a late-fee applies. Reserving for the right amount of time also ensures that Zipcars are readily available for more customers. —Joe Yates, JHMI student living in Charles Village

CHARLES VILLAGE CIVIC ASSOCIATION

The Charles Village Civic Association (CVCA) informs neighbors through our newsletter, *The Charles Villager*, and listserv messages. Through its membership and committees, CVCA supports activities like the annual Charles Village Festival to build a sense of community and improve our quality of life.

We make our voices known on planning, zoning, liquor, traffic and other issues affecting the neighborhood. We help prevent crime and build community through the Neighborhood Walkers in partnership with the Charles Village Community Benefits District. We beautify the neighborhood by organizing clean-ups and plantings. We support strong schools and recreation activities for our children and youth.

CVCA Membership Benefits

Benefits include voting rights at CVCA's General and Town Meetings, invitations to special events, e-mail news and business discounts.

CVCA MEMBERSHIP FORM

September 30 marks the start of each CVCA Membership Year.

- ☐ \$15 Individual/Household ☐ \$100 Business/Institution
☐ \$5 Senior Citizen ☐ \$100 Life Membership
☐ \$5 Non-Resident (non-voting)

Name(s) _____
List adults to be included in the membership.

Address _____

City _____ State _____ ZIP _____

Phone (Home) _____ Phone (Work) _____

E-mail _____ Fax _____

☐ Please call me to discuss volunteer opportunities, interests, and opportunities to become actively involved in the Charles Village neighborhood.

Please make the check payable to: CVCA and send with completed Membership Form to: Jennifer Erickson, Membership Secretary, 3034 St. Paul Street, Baltimore, MD 21218. For questions, please e-mail: membership@charlesvillage.net. Thank you.

PARTY? PAR-TAY!

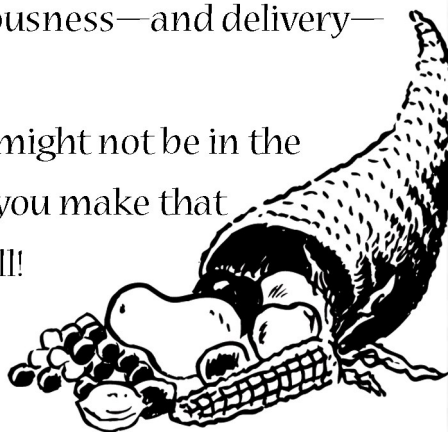
Turn your party up a few notches with catering from Eddie's. We do sandwich and deli platters with pizzazz. A tray of our cheeses pleases. Have a blast with our crab balls. And you know we don't skimp on the shrimp!

And if the meal's not your deal, go sweet, with a platter of cookies, brownies, and mini-desserts. They are simply to sigh for.

We deliver on deliciousness—and delivery—to your home or office.

While the economy might not be in the best shape, we can help you make that horn of plenty plenty full!

So don't just party.
Par-TAY!



EDDIE'S MARKET
CHARLES · VILLAGE

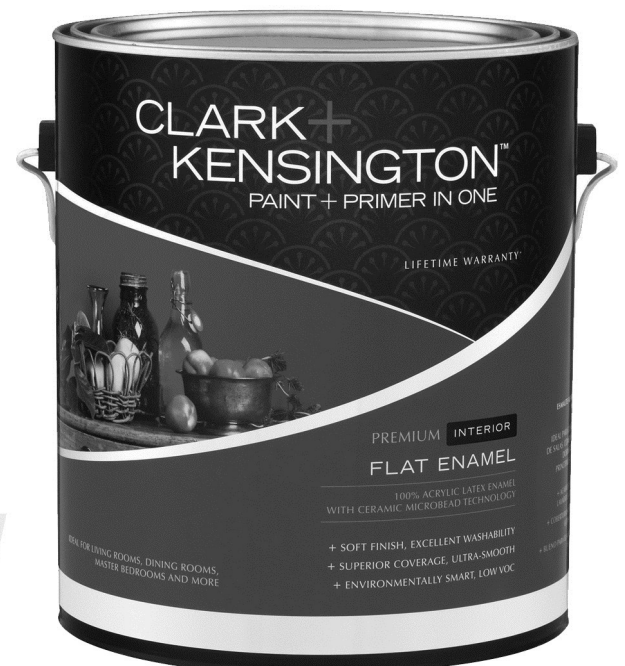
3117 ST. PAUL STREET
410-889-1558
OPEN SEVEN DAYS

Visit www.eddiesmarket.com for weekly in-store specials.

Waverly Ace Hardware • 443-627-8893
Federal Hill Ace Hardware • 410-244-5910



N
E
W



Clark+Kensington paint and primer, \$29.99 / 1429810

Free key
with this ad

SKU: VILLAGE Expiration: 12.31.11
No purchase necessary, limit 1 per person, per transaction. Applies to most house keys (\$1.99 limit).
Cashier: Enter sku, quan. 1, then price of free key.



www.CharmCityAceHardware.com

The map illustrates the traffic flow and detours for the closure of the intersection of Charles Street and Art Museum Drive (AMD) in San Francisco. The closure is indicated by a hatched area labeled "PHASE 1, 2, 3A, 3B CLOSURE".

No Detour: AMD to 33rd Street

SB Detour

NB Detour

Other labels on the map include: HOWARD, MARYLAND, CHARLES, LOVEGROVE, PAUL, CALVERT, UNIVERSITY, and ART MUSEUM DRIVE. A north arrow is located at the top center.

A black and white photograph of the University of Illinois at Chicago (UIC) Main Building. The building is a large, classical-style structure with a prominent dome and a portico supported by columns. Several cars are parked in front of the building, and trees are visible on the right side.

**Serving the Charles Village &
Johns Hopkins University
Catholic Communities**

the johns hopkins
OC
catholic community



baltimore
frassati
f e l l o w s h i p

