

THE Charles Villager

Charles Village Civic Association

Baltimore, Maryland

Holiday 2008

BUY LOCAL— Charles Village & Waverly's Main Street

Most of us agree that thinking globally and acting locally preserves the environment and strengthens the community through support of local enterprise. Taking care of our interests close to home has far reaching benefits. Who better to shop local and support the little guy than Charles Village residents— a community of socially responsible consumers with an eye for beauty and quality.

Charles Village boasts a community of entrepreneurs who offer a dazzling array of small and off-beat businesses. We can eat local and shop local without feeling deprived, because we have variety and quality in our own back yard.

We even have fresh produce available at the Waverly Farmers Market at Barclay and 32nd Street every Saturday from 7 a.m. until noon year-round.

This market is a vibrant place to shop for organic and gourmet foods. There is a cornucopia of seasonal foods, flowers and plants that will keep you smiling and shopping while you chat with your neighbors. Don't forget the handmade crafts made by our local artisans!

Here in Charles Village we have the opportunity to take advantage of local talent. Our restaurants offer a wide variety of foods and ambiance. We even have a video store staffed by film aficionados with knowledge about everything from pop-cult classics to underground and foreign films.

If you're looking for a hairstylist, we have a salon within walking distance and a hairdresser with lots of personality. And if you're looking for a tailor and dry cleaner we have one with unbeatable prices. Just think of the time you can save by buying close to home. What can you achieve with this extra time put to good use?

Whether you're new to the neighborhood or you've been here for many years, there's a certain feeling in the air that makes this place feel like home for



Miracle on Main Streets

Baltimore's Unique Holiday Experience

On December 5 at 7 p.m., a tree lighting kicks off Waverly's holiday shopping season. Waverly Main Street presents its second annual Old Fashioned Holiday Celebration December 13 from 9 a.m. to 1 p.m. While shopping, treat your children to breakfast with Santa from 9 to 11 a.m., followed by free photos with Santa in his horse-drawn buggy from 11 a.m. to 1 p.m.

more than one reason. Here in Charles Village we understand that we are responsible for each other.

So, when we get into the holiday season, let's give back to the community and make sure our talent stays close to home! Check out these eclectic places to shop and make these nearby businesses merrier with your shopping presence:

- ▶ Barnes & Noble
- ▶ Bert's Bar & Restaurant
- ▶ CC Carry Out
- ▶ Cloud 9
- ▶ Carma's Café
- ▶ Charles Village Pub
- ▶ Dominion Ice Cream
- ▶ Donna's Coffee Bar & Café
- ▶ Eddie's Charles Village Market
- ▶ Eddie's Liquors
- ▶ Gordon's Florist
- ▶ Just Cut It
- ▶ Niwana & Sweet Retreat Café
- ▶ PJ's Pub
- ▶ Standard Cleaners
- ▶ Sam's Bagels
- ▶ Super Cleaners & Laundry
- ▶ St. Paul Cleaners
- ▶ Tambers Restaurant
- ▶ Tenpachi Hair Salon



- ▶ Trinidad Gourmet
- ▶ University Market
- ▶ Video Americain

Many of these businesses are active in the Charles Village Business Association, which is working to be a recognized BUY LOCAL neighborhood.

Charles Village offers its residents the opportunity to explore the diversity of local talent without making us travel far to attain its many rewards. Not bad for a tight-knit community!

—Rebecca LaFleur, President,
Charles Village Business Association

Waverly's Main Street

For all the warm memories that the holidays bring, there's no denying that creating those memories can be a lot of work, driving to the mall, fighting for a parking space, waiting in long lines. This year, you can get to those great holiday moments faster by shopping local. And lucky for you, there's a great shopping district right around the corner from Charles Village.

Just a short walk from Charles Village— so forget your parking worries— Waverly Main Street offers an eclectic variety of shops to satisfy everyone on your list. This stretch of Greenmount Avenue between 35th and 28th Streets is one-stop shopping, offering everything from clothing to jewelry to books to electronics. You're proba-

bly already accustomed to visiting some of Waverly Main Street's destination businesses like Normal's Books and Records, Greenmount Loan and Jewelry, and the award-winning Darker Than Blue Café.

Now's your chance to get to know the other local shopping options on Waverly Main Street during the citywide Miracle on Main Street promotion in December. Main Street districts across Baltimore are hosting special holiday celebrations. Waverly's festivities begin on December 5. At 7 p.m. that evening, a tree lighting kicks off the holiday shopping season. Just a few days later, on December 13, Waverly Main Street presents its second annual Old Fashioned Holiday Celebration from 9 a.m. to 1 p.m. While you do your shopping, treat your children to breakfast with Santa from 9 to 11 a.m., followed by free photos with Santa in his horse-drawn buggy from 11 a.m. to 1 p.m.

Supporting local businesses is more important than ever this year. Thriving business districts keep our neighborhoods strong— and help us all save on gas! So skip the malls, the long lines, and more hassle this year, and be part of the ongoing revitalization of Waverly Main Street!

For more information about Waverly Main Street, visit www.waverlymainstreet.blogspot.com.

—Laura Kindseth, Manager,
Waverly Main Street, Greater Homewood Community Corporation



CVCA MEETINGS

General Meetings
Wednesday, 7 PM

December 3

January 28

SS. Philip & James
Parish Hall, Downstairs
2801 N. Charles Street

Board of Directors
Wednesday, November 19,
December 17*, January 21
Charles Village Community
Benefits District Office
2434 St. Paul Street

Call Dana Moore at 410.243.5952
for details. *If needed.

Celebrate The Winter Solstice In Wyman Park Dell

Saturday, December 20, 7 to 9 pm

Enjoy Celtic music around a bon fire in the lower Dell by
Jim Eagan & Friends, traditional Irish musicians.

Clouds allowing, Herman Heyn, Baltimore's Street Corner
Astronomer, will offer views through his astronomical telescope of
the planet Venus & other celestial marvels.

On sale for your refreshment—

Mulled Cider, Hot Chocolate, Cookies & Marshmallows.

A Seasonal Event sponsored by the Friends of Wyman Park Dell & Gertrude's
at the BMA with more funding by the Parks & People Foundation

CHARLES VILLAGE CIVIC ASSOCIATION

The Charles Village Civic Association represents the interests of residents in working with businesses, institutions, and government to preserve, enhance, and promote the quality of living in the historic neighborhood of Charles Village in Baltimore City.

BOARD OF DIRECTORS 2008-09

Dana Petersen Moore, President

3015 Guilford Avenue
Baltimore, MD 21218
410.243.5952
radazania@yahoo.com

John Spurrier, Vice President

jfspur@hotmail.com
410.243.1827

John Fink, Treasurer

410.366.4157
johnfink410@yahoo.com

Shaun Carrick, Secretary

sfcwrg57@comcast.net
410.889.3973

Brendan Coyne, Membership Scry

bccoyne@gmail.com
443.270.6010

BOARD MEMBERS

Beth Bullamore

Eric Dymond

Jennifer Erickson

Julie Galbo-Moyes

Robin Gage

Sharon Guida

Judy Hoffman

Charles Kelly III

Jeff Noll

Sandy Sparks

Ron Tanner

THE CHARLES VILLAGER

*Published five times per year by the
Charles Village Civic Association*

EDITORIAL BOARD

Sandy Sparks, Designer/Editor

srsparks@verizon.net
410.243.2156

Dawna Cobb

dawnacobb@mindspring.com
410.410.366.6782

John Spurrier, Finances

jfspur@hotmail.com
410.243.1827

Jennifer Burdick

jennifer.burdick@verizon.net
410.467.5462

Dana Petersen Moore, President

radazania@yahoo.com
410.243.5952

DISTRIBUTION

Chuck Bullamore, Coordinator

csbullamore@jhu.edu
410.366.8245

ADVERTISING

John Spurrier

Advertising Manager

For all advertising, contact:

410-243.1827

charlesvillageradvertising
@gmail.com

DEADLINE for copy and ads.

January 9 for Winter 2009 issue

THE CHARLES VILLAGER

2942 Guilford Avenue
Baltimore, Maryland 21218

President's Letter

Dana Petersen Moore, CVCA President

Hey! Did you hear the news? Charles Village has been selected by the American Planning Association as one of the "Top Ten Great Neighborhoods" in the United States of America! APA's designation confirm and makes official what most of us already know—Charles Village is a great place to live, work, play and study. We now have an official imprimatur to support the boast that Charles Village is indeed great. My own joy and pride in being a Charles Villager has been memorialized by a few neighbors, and I would like to share their sentiments with all of you.

Upon receiving an award from the CVCA for their efforts to organize the community's response to a spike in crime, Father Kevin Gillespie, S. J., of Wheeler House (Guilford Avenue) wrote the following e-mail to friends:

"Today we learned that the neighborhood surrounding our Wheeler House Jesuit Community, Charles Village, was rated as one of the top 10 neighborhoods in the U.S. Not bad for a host of row homes. For me it is a happy combination of my family's row home in West Philadelphia and our suburban home in Narberth, PA. Here we Jesuits truly have an amazing collection of neighbors of all sort of ages, races and religious denominations. We also have a nearby church whose bells chime the hours during the day and even the Salve Regina at 6 PM. And while we and our neighbors did have a couple of break-ins this past summer, the ways in which we mobilized as caring neighbors was truly an amazing testimony to good citizenship. We even have a nearby Farmers Market every Saturday, a garden tour in the spring(yes, my Wheeler House garden has become part of the tour), a summer block party (that we have hosted twice), outdoor movies in the summer and even the Baltimore Marathon runs through our streets in the fall.

Last month the Charles Village Association held its annual civic awards ceremony at the nearby Baltimore Museum of Art. I was there to accept on behalf of the Wheeler House Jesuit Community the President's Award for the Jesuits involvement in the neighborhood over the past 40 years. The award, however, was not the highlight of the evening for me. No, it was the dignity that the CVCA gave the 10 area Sanitation Workers by bestowing on them awards. These men and women received their awards to a standing ovation consisting of dozens of people from throughout the neighborhood. Yes, everyone is given equal dignity and respect in the neighborhood.

I could go on about how grace-filled it has been for me to live in this neighborhood the past five years (did I mention that at the nearby Cleaners the Asian proprietor often gives me the latest village news), but I think that you get the picture. Amidst all the troubling socio-economic news, it is nice to know that vibrant neighborhood citizenship and caring communities still thrive in the United States."

Shortly after learning of the APA's recognition of Charles Village, D. Williams wrote:

"When I moved into the area in 1980, I felt that Charles Village was where I belonged. It felt as if everyone was welcome here and all were valued! That remains true even today. I still cannot imagine living anywhere else!"

This sentiment is shared by just about everyone I encounter as I navigate my way through Charles Village. This is just one of the things that makes Charles Village such a wonderful place.

Another neighbor, Harvey Schwartz, has chosen to honor Charles Village and the APA's recognition. He is doing so on his own and with his own dime (okay.....dollars!) by planting trees and bushes throughout the area. He writes:

"I have been honoring the neighborhood's designation by planting more trees and bushes at Calvert and 33rd Streets, 33rd and Abell and in front of 345 E. 33rd Street. I have planted five bushes and one River Birch tree along the even-numbered side of the 300 block of University Parkway, from Abell to Barclay and by 344 E. 33rd Street and the alleyway. I will also continue digging out three tree wells on 30th Street across from the Schnapps Shop."

Harvey ended his note by saying "Honor our neighborhood and plant a bush!"

And of course, I agree with the sentiment of all three and the rallying cry Harvey concluded with his note. While we might not all be able to plant trees and shrubs at Harvey's pace, we can all do something to honor the treasure of a neighborhood we call home. A small group of creative Charles Villagers is already at work developing plans for a year-long celebration of our "Top Ten Neighborhood" designation. If you would like to join this group, let me know. We would love to have you!

Happy Holidays, Dana Moore

A Peppermint Remedy

A few drops of peppermint oil
in your non-metal garbage cans
will repel rats and keep them from
chewing holes in the cans.



Source: Lovegrove Alley Sanitation Engineer

Thanks for RPP Help

Volunteers make it possible for the CVCA in coordination with the Abell Improvement Association (AIA) to continue the convenient pick-up of RPP permits at the Waverly Farmers Market in the morning and Eddie's Charles Village Market in the afternoon. Otherwise, everyone registered would need to go downtown to the Parking Authority Office during business hours. Many thanks to Bonnie Bessor for organizing all the volunteers. Bonnie is looking for volunteers to organize the 2009 operation well in advance. Contact her at 410.467.5170 or bbessor@gmail.com.

TITAN
DEVELOPMENT, LLC
Commercial & Residential Home Improvement

410.366.2100

2903 North Charles St. | Baltimore, MD 21218

MHIC #95960 | We accept VISA and Mastercard

**Titan Development is a licensed construction company
that is available for all of your home improvement needs.**

**You name it, we can do it. Same day service.
We accept all major credit cards.**

CALL 410.366.2100. (MHIC #95960)

Volunteers— Thank you for Delivering This Newsletter³

Chuck Bullamore, Coordinator of Distribution

We would like to take this opportunity to thank the volunteers listed below. They deliver 5,000 copies of each issue of the *Charles Villager* door-to-door, as well as stock distribution points (such as Eddie's) throughout the area. To meet our goal of delivery to all area residences, we still need to fill in some gaps. Please contact Chuck Bullamore if you are able to help out with this for a few minutes five times a year. You can deliver door-to-door in your own block if that's where the need is; or we also need people willing to deliver perhaps a few blocks away. We also need volunteers to call to fill in for someone who may be temporarily unavailable for a particular issue. Thanks and farewell to those volunteers who have left us during the past two years: Libby Pennachia, Alex Csicsek, Kristi Pettibone, Morgan Allyn, Sofia Bahena, Odette Ramos, Shabina Bahl, and Deirdre McElroy.

If you can help too, e-mail Chuck Bullamore at csbullamore@jhu.edu, or call at 410.366-8245.

North Howard Street

Chris Jensen— 2800, 2700 & 2600

Maryland Avenue

Betty Hill— 2800

Reggie Parker— 2700

David Canova— 2600

John Schrufer— 2500

North Charles Street

Dawna Cobb— 2900

Lee Truelove— 2700, 2600 & 2500

Saint Paul Street

Kent Waters— 3000

Jennifer Burdick— 2900

Ron Schultz— 2800

John Spurrier— 2700

Marcia Holden— 2600

Jacques Kelly— 2600 (west side)

Lee Truelove— 2500

North Calvert Street

Richard Johnson— 3200 & 3100

John Fink— 3000

Barbara Rauch— 2900

J.W. Radabaugh— 2800

Karen Morley— 2700

Rory Flanagan— 2600

Sheila Rees— 2500, 2400 & 2300

Guilford Avenue

John Fink— 3200

Linda Olson— 3100

Didon Pachner— 3000

Chris Bruce— 2900

Ken & Dorris McElroy— 2800 & 2700

Lauren Redmond— 2600

Jennifer Martin— 2500

Peter Duvall— 2400

Abell Avenue

Michael Howard— 3200

Matthew Weinstein— 3100 & 3000

Barclay Street

Michael Grant— 3200

Simone Thompson— 3000 & 3100

Vineyard Lane

Simone Thompson

East 32nd Street

James Aguirre— Unit, 100, 200, 300 & 400

East 30th Street

Dawna Cobb— Unit

Didon Pachner— 200

Linda Olson— 300

West 29th Street

Betty Hill— 100 & Unit

West 27th Street

Diane Brunetti— 100 & Unit

East 27th Street

John Spurrier— Unit

West 26th Street

John Schrufer— 100 & Unit

East 26th Street

Jim Zitzer— Unit

Businesses & Institutions throughout Charles Village and the Area

Richard Johnson, Dawna Cobb, John Spurrier, Chuck Bullamore, Gil & Jan French and Sandy Sparks

Area Distributors throughout Charles Village

Charles Baker, Ed Hargadon, Cornel Rubino and Jim Casey

THANK YOU.

See you for
Tuesdays with Gertie!
Many of our most popular specials
priced at \$12 each.

And don't miss
Wine on Wednesdays
All wines half price after 4pm.

GERTRUDE'S

JOHN SHIELDS SERVES
REGIONAL CHESAPEAKE CUISINE
AT THE BALTIMORE MUSEUM OF ART
10 ART MUSEUM DRIVE

LUNCH • DINNER • WEEKEND BRUNCH
TUESDAY THRU SUNDAY

**PROUD TO BE PART OF THE
CHARLES VILLAGE COMMUNITY
SINCE 1998!**

410.889.3399

ON-LINE RESERVATIONS AT:

WWW.GERTRUDESBALTIMORE.COM

Johns Hopkins University A World of Opportunities Right Next Door

Visit our world-class library—A photo ID provides access to the university's main library, the Milton S. Eisenhower Library. See www.library.jhu.edu or call (410) 516-8335. Free.

Take noncredit Johns Hopkins courses—Odyssey presents liberal arts courses and lecture series for adults each fall and spring.



See www.odyssey.jhu.edu or call (410) 516-4842 (general info 4842). The Odyssey Liberal Arts Program for Adults provides personal enrichment classes at locations throughout the area. See www.odyssey.jhu.edu/schedule or call (410) 516-8516. \$50-500.

Find out who was here first—Tour Homewood House, a National Historic Landmark and the first building on what is now the Johns Hopkins Homewood campus. See www.museums.jhu.edu or call (410) 516-5589. And don't forget Evergreen House at 4545 N. Charles St.! See the museums Web site or call (410) 516-0341.

Attend JHU athletics—For schedules see <http://hopkinssports.cstv.com>. Free, except men's lacrosse and certain contests.

Tour the campus—Join an admissions guide, 10 a.m. and 1 p.m. most weekdays from Mason Hall. Call (410) 516-8171 or visit <http://apply.jhu.edu/visit/guidedtours.html> to confirm schedule. Free.

Observe stars and planets—The Maryland Space Grant Observatory hosts an Open House every Friday, weather permitting, starting at dusk, www.mdspacegrant.org/observatory.html. Call (410) 516-6525 after 5 p.m. Free.

Enjoy the arts—A world of music, theater, film, dance, and media presented by world-renowned, emerging, and local talent awaits you, <http://getintothearts.jhu.edu/discover.html>. Free and various costs.

Attend hundreds of lectures, symposia, forums, readings, and workshops—The Johns Hopkins Milton S. Eisenhower Symposium presents some of the world's most prominent leaders, politicians, artists, and scholars who discuss issues of national importance. See www.jhu.edu/mse. Free. Other opportunities at www.jhu.edu/news_info/news/events.

Take a stroll through the campus—Enjoy fall foliage, sculptures, the Homewood Field track, sitting under a tree, or any of the many other outdoor opportunities. Free.

Village Chat

Dawna Cobb

Have you heard? Charles Village has been named one of the 10 great neighborhoods in the United States by the American Planning Association. I first read this in the *Baltimore Sun*, but soon the web was buzzing with news of the award. It appears the things that so many Villagers love about living here also impressed the APA, places such as the Olmsted designed-Dell, the Abell Open Space, the Waverly Farmers Market, sidewalks (imagine!), cafes, stores, the Village Learning Place, the nearby BMA and Enoch Pratt Branch Library. Essential to the Village's success over the years has been and is the activism of its residents, who have preserved the natural and architectural gifts that were bestowed upon us so many years ago. Check out <http://www.planning.org/greatplaces/neighborhoods/2008/charlesvillage.htm>

What is the APA you may ask? It is an organization composed of planners (urban and otherwise), elected officials and citizens. Its mission is to *provide leadership in the development of vital communities by advocating excellence in community planning, promoting education and citizen empowerment, and providing the tools*

and support necessary to meet the challenges of growth and change. Community leaders and residents are planning celebrations in 2009. Look for more details about the award in the Winter issue of *The Charles Villager*.

Charles Village was a busy place on Baltimore Marathon Day on Saturday, October 11. Villagers did their part to cheer on the runners. At 28th and St. Paul—mile 4 of 26.2—kids and staff from the Margaret Brent School were out in force to cheer the runners. Also there were a number of Baltimore Hons dressed to the nines with beehives, huge sunglasses, lots of lipstick and animal prints. While the leaders looked focused and determined, many that followed were slapping the kids' out-reached hands and hugging the Hons. Villagers **Paula Fernandes, Alma Nyhan, Aliyson Evelyn Gustave and Evelyn Omega Cannon** were out to cheer on friends, spouses and colleagues, if they could pick them out of the crowd. For the most part the runners looked fresh and energetic.

It was a different story a couple of hours later on Guilford and 30th Street, and just past that at mile 23-St. Paul and 29th Street. On Guilford, runners

were greeted with tunes that DJ **John Spurrier** pumped out of speakers on the roof of a car, while others handed out bananas and pretzels. Just up the street was the guy who dresses up as a tiger and plays *Eye of the Tiger*. Former Guilford residents come back every year to give out gummy bears. "It's a tradition," they told me. On St. Paul and 29th runners had 3.2 more miles to go, but it was hot. Props go to those Villager runners I managed to glimpse—**Derek Demaree, Bob Giggler, Vonnie Gowe, Carol Westcott**. This was Carol's first marathon and she discussed how she trained for this undertaking on WYPR's *Maryland Morning*. You can listen by going to wypr.org. The show was broadcast on October 10.

Authors among us. My neighbor a few blocks south on Charles Street, **Michael Kimball**, is an author, who just published his third novel *Dear Everybody*, which garnered an excellent review in the *Los Angeles Times*. <http://www.latimes.com/features/books/la-et-book6-2008sep06,0,4308144.story>. Michael's wife, **Tita Chico**, a professor of English at the University of Maryland, was recently tenured. Congratulations to both of you! **Shirley Brewer**, a resident of the 2700 block of St. Paul Street, is the author of *A Little Breast Music*, a book of 25 poems, published by Passager Books. Shirley says the poems are about themes all can relate to — family, childhood, love, loss, resiliency in the face of loss. She is thrilled with the design, and happy that her poems are out in the world. From the publisher's website: "After a thirty-year career as a speech therapist, Shirley earned her M.A. in creative writing and started her own business, Poetic License (www.apoeticlicense.com), in which she creates original, personalized verses for all occasions. She also writes poetry for businesses. Shirley has developed Plorkshops, which help people embellish their life journeys and learn how to open up to more creative paths." <http://raven.ubalt.edu/features/passager/ALittleBreastMusic.htm>

And now for something completely different: Kathleen Wilsback, a resi-

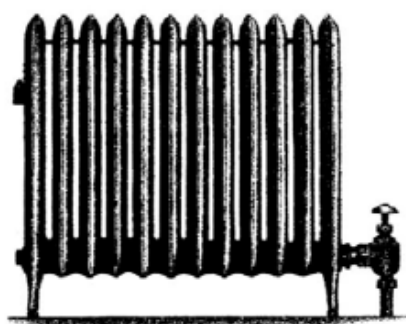
dent of the 3000 block Guilford Avenue, is simply a rabbit lover. Fourteen years ago she founded the Maryland-DC-NoVA Chapter of the House Rabbit Society, which has rescued over 1,000 rabbits. Kathleen also serves as President of the National House Rabbit Society. The HRS has headquarters in Richmond, CA, with over 20 chapters across the US and international chapters in Canada and Italy. By day, she is a breast cancer researcher at Hopkins. Good work Kathleen!

John Spurrier reports that in early October his 27th Street neighbors **Adam and Melissa Rothwell** welcomed the birth of their son **David Owen Rothwell**. Congratulations!

Greater Homewood's Second Annual Neighborhood Institute is scheduled for November 15 at Charles Commons. Sponsored by the **Greater Homewood Community Corporation**. This is free training and workshops for anyone interested in learning: effective methods of advocacy with elected officials, building leadership in a community organization, mediating differences in community associations, planning (and funding) block projects; how to run an effective meeting. Featured speakers include Police Commissioner Bealefeld, as well as representatives from the Baltimore City Public Schools and the Mayor's Office of Sustainability (Charles Village's own **Laura Weeldryer and Beth Strommen**. For the schedule and more details, see page 9.

Some crime prevention reminders—don't leave anything visible in your car or truck. Use a permanent marker to write your license number on electronics, laptops, bikes, etc. and be sure to keep track of serial numbers of the things you buy. Should you lose anything that is recovered, having taken these steps will make it easier for the police to return your stuff to you.

Please send neighborhood news to me at dawnacobb@mindspring.com or to 2943 North Charles Street, Baltimore 21218.



Central air conditioning for homes with hot water or steam heat.

If a home doesn't have forced air heat, installing ductwork for central air conditioning can mean major remodeling and expense, but a Unique Indoor Comfort system doesn't require large metal ductwork or major remodeling.

Cool air is delivered through small 2" flexible metal tubing that can easily be woven through walls and ceilings, around studs and other obstacles. All that's visible are small round outlets in every room. What's more, Unique Indoor Comfort offers Lennox high efficiency equipment.

Proven in thousands of homes, easy to install Unique Indoor Comfort is the central air conditioning system for the older home.

Glen Burnie, MD • Call today (410) 760-2121

www.baltimoreunique.com



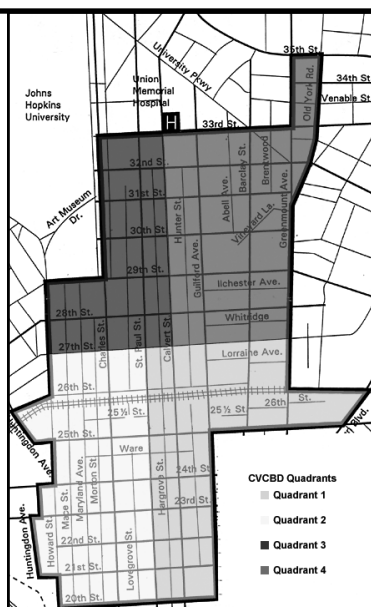
Philadelphia/NJ New York/Conn. Boston, MA Baltimore/DC

www.thegoodluckbug.com

We are a *locally owned, full-service,* landscaping company.

Contact us for a FREE quote on your next Landscaping project
P: 410-227-4641





- Support and/or organize special events: Mayor's Fall and Spring Cleanups
Support 4 or more neighborhood cleanups, National Night Out Against Crime, 7 or more neighborhood activities.



The CVCBD and CSX Corporation have entered into a partnership to maintain the CSX fence line property along 26th Street between Greenmount and Huntingdon. The CVCBD completed the initial cleanup on September 21st and will maintain it three times during the summer (May, July, and September) and once again in the Fall/Winter when needed.

- CSX-CVCBD Partnership
CVCBD maintains the CSX fence line and sidewalks from Loch Raven to Huntingdon along 26th Street.

Go to www.charlesvillage.org for information on CVCBC services.

Announcing 2009 Quad Representatives

Elected October 7, 2008

Quad 1: Rob Books, 26th & N. Calvert, represents roughly from St Paul to Greenmount and from 20th to 27th

Quad 2: Robert Orr, 25th & St Paul, represents roughly from St Paul to Huntingdon/Howard and from 20th to 27th

Quad 3: Ron Griffin, 28th & N. Calvert, represents roughly from Calvert to Howard/Charles and from 27th to 33rd

Quad 4: Kirsch Jones, 28th & Guilford, represents roughly from Calvert to Greenmount and from 27th to 33rd, including up to 35th along Greenmount and Old York Road

Summary of Supplemental CVCBD Sanitation and Security Services

The Charles Village Community Benefits District includes approximately 100 square blocks from 20th to 35th and from Loch Raven to Huntingdon (see map above). Each year CVCBD negotiates with Baltimore City a supplementary services agreement. In 2009 CVCBD will offer the following services:

- Empty and maintain 74 CVCBD trash baskets 365 days per year.
7 days a week in the evenings during the week; morning or evening on weekends.
- Security patrol the entire District 13 hours per day 255 days per year.
Five days a week service—Monday through Friday—from 9 a.m. through 10 p.m.
- Sweep every sidewalk and gutter in the District 3 to 4 times per month
22 miles, including storm drains, from 20th to 35th and from Loch Raven to Huntingdon.
- Change and pickup Greenmount camera tapes 5 days a week
Change and pickup tapes at 9 a.m. daily at the Waverly Library. Tapes are kept for 30 days. Northern District Police review tapes as needed.
- Support Neighborhood Walkers on Patrol Program
See <http://sites.google.com/site/neighborhoodwalkersonpatrol/Home>. Support eight walks weekly plus monthly training for Walkers. Co-sponsor program with GHCC, Union Memorial, Northern District Police and the four neighborhood associations.
- Produce and distribute weekly Crime Alert
Distribute weekly list of crimes committed in the District during the previous week, plus useful links, e-mailed to anyone requesting on the CVCBD e-mail distribution list.

MALTESE BOWEN LLC

Home Improvement Services

Owned and operated by local and Charles Village residents

443-622-3549 // www.MalteseBowen.com

Our Specialties Include
Kitchen and Bath Remodel, Windows and Doors, Concrete Countertops, Tile, Drywall, Painting, and Much More

See more of our work at MalteseBowen.com

Licensed and Insured
MHIC# 97135

AMERICAN MANAGEMENT, LLC

Serving Baltimore for more than 25 years.

410.366.2100

www.americanmanage.com

2903 N. Charles St. Baltimore, MD 21218

ATTENTION RENTERS:
Looking for an affordable, centrally located property to rent? We have a large selection of available properties in all the hot Baltimore neighborhoods.

ATTENTION PROPERTY OWNERS: Tired of managing you own residential or commercial property? Let us manage it for you profitably.

CALL US TODAY!

ROLAND PARK DRIVING SCHOOL

The Rotunda— 711 West 40th Street, Suite 205

MVA Certified Driver Education
One-on-One Mentoring
Driver Assessment

3 Hour Drug & Alcohol Classes
6 Hour Driver Improvement Classes
Stick Shift Lessons

EXPERIENCED, SKILLED, CALM AND PATIENT TEACHING FOR ALL AGES
And especially for
"THOSE WHO THINK THEY CAN NOT DRIVE"

www.rpds.net
Cell: 410.215.8867

Patrickfrancis@verizon.net
Office: 410.467.7737



2521 St. Paul Street • 410.235.2210



VLP Library Hours

Monday	Noon– 6 pm
Tuesday	10 am– 6 pm
Wednesday	Noon– 8 pm
Thursday	Noon– 8 pm
Friday	10 am– 6 pm
Saturday	Noon– 4 pm
Sunday	Closed

Announcing the 11th Annual SPAGHETTI DISCO Saturday, February 28

Village U — Coming in 2009!

The VLP is re-launching its adult education program in a big way! Keep your eyes out for more details.

Liesje Gantert, Executive Director

VLP Calendar

2nd Wednesdays at the VLP — 7 to 9 pm

A monthly series of performances, lectures and cultural enrichment with time for conversation. Meet interesting people from across the City. Enjoy refreshments.

November 12— Holiday Artisan Market

December 10— The authors of TKF Foundation's book, *Open Spaces Sacred Places*, will discuss the healing power of nature in cities.

January 14— TBA

HOLIDAY ARTISAN MARKET

jewelry • wood • glass • fiber • clay

Wednesday November 12, 7-9 PM

free admission, food, and beverage

Senior Tea Series — 2nd Tuesday, 11 am to Noon

Seniors are invited for free performances and presentations. Refreshments served.

November 11— Conservation workshop presented by BGE

December 9— The Ages on Stages acting ensemble will perform improv. Audience participation!

January 13— TBA

INTERNATIONAL HOLIDAY OPEN HOUSE

**THE VLP
DECEMBER 13
12PM-4PM**

Join us as we
celebrate winter
holidays from
around the world!

**CRAFTS • FOOD •
MUSIC • SANTA
& MORE**



I ♥ winter
holidays and festivals!



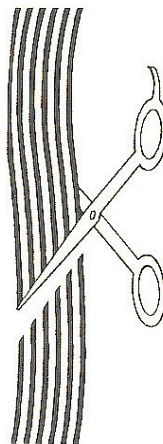
Join us as we celebrate winter holidays from around the world. Enjoy food, crafts, live music and dance performances that reflect different holiday customs, along with a bake sale, a book sale, and a chance to visit Santa! Free event for all ages.

Unique Decorative Glass Solutions



SGO Designer Glass
of Baltimore, Inc.
(410) 308-1888
www.sgobaltimore.com

**Just
Cut
It!**



*Make an appointment
before heading home for
the holidays.*

410-235-6614
3100 St. Paul Street

Get a total body workout in a total of 30 minutes



50% OFF SERVICE FEE*

30 minutes, 3 times a week is all it takes to see real results on our strength-training and cardio circuit. And our knowledgeable Curves trainers are always there to help, teach or just inspire. Maybe that's why over 4 million women have achieved their fitness goals with us.

Curves

YOUR CURVES WILL AMAZE YOU.™

410-467-8700

733 W.40th St., Ste. 20
Baltimore MD 21211
Located in the building across from Giant

*Offer based on first visit enrollment, minimum 12 mo. c.d. program. New members only. Not valid with any other offer. Valid only at participating locations.

ARTS IN THE VILLAGE

7

Jennifer Burdick

Baltimore Museum of Art. Pass on the old masters and experience an innovative contemporary European Artist, **Franz West**. Whimsical and provocative—a show not to be missed. Thru January 4. Check out Front Room, the Museum's experimental space. Currently showing: Dieter Roth and Rachel Harrison.

Sundays, from 2-4, experience family-friendly fun with a variety of themes and projects. Just show up, or check out artbma.org for a list of activities.

For many special lectures, films and events, visit www.artbma.org.

The Walters Art Museum, 600 North Charles Street. **Bedazzled: 5,000 years of Jewelry**, a glorious exhibit of adornment—many collected by Henry Walters himself. Thru January 4.

In the spring 2008, the University of Maryland and The Walters performed a CT scan on a museum mummy to conduct a "virtual autopsy." The results will be presented as **Mummified**. Opening November 15, this should be fascinating for kids of all ages.

For many events, lectures, and exhibits visit www.thewalters.org

The Jewish Museum of Maryland, 15 Lloyd Street, is featuring a special exhibit **Dateline: Israel, New Photography and Video Art** with art from Israel, Europe and America on loan from the Jewish Museum in New York. Thru January 4. Open Monday–Friday and Sundays from noon–4 pm. For more information on programs and events, visit www.jewishmuseummd.org or call 410.732.6400.

Our neighbor, **Barnes & Noble Johns Hopkins**, continues to have notable speakers and book signings. On November 6 at 7 pm, **C. Fraser Smith**, Baltimore Sun columnist and WYPR senior news analyst, will discuss his latest book, *Here Lies Jim Crow: Civil Rights in Maryland*.

Center Stage, 700 North Calvert Street, presents Edward Albee's biting **Who's Afraid of Virginia Woolf?** Go see George and Martha take each other on in the classic marital cold war. Thru November 30. 410.332.0033 or visit www.centerstage.org

Also at Center Stage. You've been hearing a lot about money—or lack thereof—these days, but we're pretty sure you haven't heard tales like the ones told at **The Stoop's** show, **Money Changes Everything: Stories about striking it rich, getting by, and going broke**. November 10, 7 p.m. Cocktails and Live Music by **Caleb Stine and the Brakemen**, calebstine.com. Show at 8 p.m.

Everyman Theatre, 1727 North Charles Street, opens **Filthy Rich** by **George F. Walker**. Thru December 14. Sharp wit, sex, corruption, and deceit mark this uproarious *film noir* satire. Tix: 410.752.2208 or www.everymantheatre.org

Theatre Project, 45 West Preston Street, presents **An Evening of New Works** by **Air Dance Bernasconi**. This Baltimore based aerial dance company is terrific. November 28–December 7. Tix: 410.752.8558 or www.theatreproject.org.

Spotlighters Theatre, 817 St. Paul Street—presents William Inge's Pulitzer Prize winning classic, **Picnic**. November 21–December 21. Tix: 410.752.1225 or www.spotlighters.org

The Baltimore Opera Company opened the season with a spectacular **Aida**. On November 15, 19, 21, and 23, the company presents Vincenzo Bellini's **Norma**, a tale of political and familial crises. 410.727.6000 or www.baltimoreopera.com. The BOC will host live broadcasts from the Metropolitan Opera Company on selected Saturday afternoons at 1 p.m.—a cost effective way to see grand opera. Visit www.baltimoreopera.com.

JHU's Shriver Hall Concert Series. **Richard Egarr**, Harpsichord, Saturday, November 15 at 3 pm. Free. **Ritz Chamber Players** with Jonathon Carney, Violin, Sunday, December 7 at 5:30 pm. Tix: 410.516.7164 or www.shriverconcerts.org

The Tone Rangers, featuring JHU's Dean of Undergraduate Academic Affairs, **John Bader**. Classic rock and roll repertoire. Award winning group: 2002 Regional A Cappella Champions and 2008 WAMMIE Award winners. Opening Act: JHU's Vocal Chords & Sirens. Saturday November 15, 8pm in the Bloomberg Auditorium. General admission: \$8. Students: \$3. www.tonerangers.com and click on *Concerts & Events*.

The **Hopkins Symphony Orchestra** offers a nearby opportunity to experience symphonic music. Chamber Concert featuring work by **Mozart**, Sunday, November 9 at 3 pm in the Bunting-Meyerhoff Interfaith Center. **Mussorgsky, Rachmaninoff and**

Tchaikovsky, Saturday, December 6 at 8 pm in Shriver Hall. 410.516.6542 or www.jhu.edu/jhso

Baltimore Choral Arts Society. **Christmas with Choral Arts**, Tuesday, December 2 at 7:30 pm in the Baltimore Basilica. **Sing-Along Messiah**, Friday, December 19 at 7:30 pm in Kraushaar Auditorium at Goucher College. **Christmas for Kids**, Saturday, December 20 at 11 am in Kraushaar Auditorium at Goucher College.

University of Baltimore Great Pianist Series at the Student Center Performing Arts Theater, Maryland Avenue at Mt. Royal. **Gabriela Montero**. December 6 at 8 pm. 410.837.4053 or visit www.ubalt.edu/studentcenter

Towson University Asian Arts and Culture Center presents **Touch Your Heart – Music from Formosa**, Saturday, November 8 at 8 pm in Stephens Hall. Tix: 410.704.2787 or www.towson.edu/artscalendar.

The St. Cecilia Society of St. Mark's Church, 1900 St. Paul Street, under the leadership of **James Harp**, continues to host interesting programs. **A Fool There Was**, the silent film, starring **Theda Bara** will be accompanied by live music. Sunday, November 16 at 2 pm. **A Maryland Colonial Christmas**—a program of instrumental Christmas and holiday music that would have been heard in Colonial Maryland. Sunday, December 21 at 2 pm. Free, but donations are requested.

The Ottobar, 2549 N. Howard Street, is happening seven nights a week. Some shows require advanced tix. www.theottobar.com or 410.662.0069.

For a weekly update on all that's worthwhile in the arts and culture scene, subscribe to the Greater Baltimore Cultural Alliance listserv at <http://www.baltimoreculture.org> or go to BaltimoreFunGuide.com or fun-saver@baltimorefunguide.com

Send news on art venues and productions to: jennifer.burdick@verizon.net or call 410.467.5462.



The Baltimore Ethical Society

**Diversity Humanism
Community Equality**

Sunday meetings - 10:30 a.m.
Weddings & Commitment Ceremonies
306 W. Franklin St., Ste. 102
410-581-2322
www.BaltimoreEthicalSociety.org

ONE WISDOM FELLOWSHIP 500 E. 39TH STREET

P Embracing the Wisdom of All Ages,
E Seeing Each Person as a
A Loved Expression of the Divine.
C We Invite You to Join Us
E **Sundays at 10:30 am**
for Prayer, Inspiration and Fellowship

Soulful Concert November 16th 5 pm
Thanksgiving Day Service 10:30 am
Movie Nights - Wednesdays - See Web

www.onewisdomfellowship.org / 410.584.2574



- **Weddings**
- **Dances**
- **Parties**
- **Promotions**
- **Meetings**
- **PA rental**

410.243.1827

Village YOGA

Begin or enrich a Yoga practice with gentle and intense exercises in Kripalu Hatha.
Build strength and flexibility.
Prevent and relieve discomfort.

Whole term or Drop-in

MIBS PELL, Instructor
3107 N. Charles Street 410-235-5778

Charles Village's 3 Public Schools Exceed State Averages for Test Scores

For the first time in recent memory, test scores at all three Baltimore City public schools located in the Charles Village area exceeded the Maryland statewide average last year.

Students at Dallas F. Nicholas, Sr. Elementary, Barclay Elementary/Middle, and Margaret Brent Elementary/Middle all scored above the statewide average on the Maryland School Assessment test (MSA). The data at Barclay and Margaret Brent reveal a particularly striking turnaround in the percentage of students testing at proficient or advanced levels on the MSA. The proficiency (passing) rate in the elementary grades at Barclay has increased from less than 60% in 2004 to nearly 90% in 2008. Middle school test scores at Barclay have also shown similar dramatic increases and demonstrate scores above the Baltimore County average in some areas. Like Barclay, Margaret Brent has moved from the State's list of failing schools ten years ago to proficiency rates several percentage points above the Maryland state average in 2008.

Dallas Nicholas, Barclay, and Margaret Brent have all been the beneficiaries of important partnerships with community groups in recent years. Greater Homewood Community Corporation (GHCC) has worked closely with all three schools for the past decade, supporting their academic programs with Experience Corps and other enrichment programs. They have also developed Community Schools at Dallas Nicholas and Barclay that provide after-school enrichment and wraparound services for families. GHCC has two full-time staff working at both Barclay and Dallas Nicholas, and one at Margaret Brent. Other partnerships important to the schools include the Village Learning Place at Margaret Brent, Goucher College at Dallas Nicholas, and Johns Hopkins University groups at Barclay and Margaret Brent. Parent and community involvement has increased at all three schools. As these broad community partnerships suggest, even neighbors without school-aged children are active in strengthening public schools in Charles Village, because strong neighborhoods and strong schools go hand-in-hand.

For Charles Village residents with school-aged children, it's becoming increasingly clear that there are excellent schools in their own backyard. Margaret Brent has spent the last few years expanding its grade levels to include the middle school years. Barclay and Margaret Brent are now PreK-8 schools, allowing students to attend the same school through eighth grade (Dallas Nicholas remains Pre-K-5).

Celebrate The Winter Solstice In Wyman Park Dell

Saturday, December 20, 7 to 9 pm

Enjoy Celtic music around a bon fire in the lower Dell by Jim Eagan & Friends, traditional Irish musicians.

Clouds allowing, Herman Heyn, Baltimore's Street Corner Astronomer, will offer views through his astronomical telescope at the planet Venus & other celestial marvels.

On sale for your refreshment—

Mulled Cider, Hot Chocolate, Cookies & Marshmallows.

A Seasonal Event sponsored by the Friends of Wyman Park Dell & Gertrude's at the BMA with more funding by the Parks & People Foundation

The school system has begun to provide magnet options for the middle grades as well, including the Ingenuity program in math and sciences, an advanced academic program at several schools, and several 6-12th grade college-bound schools allowing parents many additional choices for their students.

Charles Village is also conveniently close to many of the city's best high schools, including Baltimore City College, Baltimore Polytechnic Institute, Baltimore School for the Arts, and Western High School. These schools all consistently have test scores well above the Baltimore City average and roughly equivalent to the best Baltimore County high schools. All high schools in Baltimore now allow for city-wide enrollment to allow selection of the high school best suited to a student's interests and needs and include high schools with a focus on government service, science, technology, and the International Baccalaureate degree.

If you're looking for a way to help keep Charles Village a strong, safe, and healthy neighborhood, consider supporting its public schools as a parent, neighbor, or volunteer! To find out how you can help, please visit www.greaterhomewood.org or call 410.261.3501.



Happy Holidays!

From Village Realty and Star Property Management



Village Realty, LLC
www.MyVillageRealty.com



Star Property Management, LLC
www.RentalApartments.com

3120 St. Paul St.
Baltimore, MD 21218
410-235-7764
410-366-SOLD

Proudly serving our clients' rental, management, and sales needs for over 15 years!

* Michael S. Levine, ABR * Tony Ruby, REALTOR® * Alexi Correa, REALTOR® * Cammie Griffin, REALTOR®
* Scott B. Gibson, REALTOR® * Ilan Goldberg, REALTOR® *
* Darlene Harenberg, GRI, Broker *



Greater Homewood Sponsors 2nd Neighborhood Institute on Saturday, November 15

Join your neighbors and fellow community leaders for a FREE day of training and workshops, that will connect you with the resources you need to strengthen your neighborhood! The event will take place on November 15 at the JHU Charles Commons, 33rd Street between Charles and St. Paul.

Here are just some examples of informational and training workshops:

- ▶ **How to Organize Your Community**
- ▶ **Effective Methods of Advocacy to your Elected Officials**
- ▶ **Building Leadership in your Neighborhood Association**
- ▶ **Legal Resources for Your Neighborhood by the Community Law Center**
- ▶ **Drug Nuisance Abatement**
- ▶ **Creating a Citizens on Patrol Group in your Neighborhood**
- ▶ **Planning (and Funding!) Block Projects**
- ▶ **Mediating Differences in Neighborhood Associations**
- ▶ **How to Run Effective Meetings**

You'll also get a chance to hear Baltimore leaders speak about what they are doing to strengthen and sustain Baltimore neighborhoods, and what you can do in your own community. Speakers include Police Commissioner Fred Bealefeld, Laura Weeldreyer from Baltimore City Public School System, Mark Sissman of Healthy Neighborhoods, Valentina Ukwuoma of DPW, and Beth Strommen of the Baltimore Office of Sustainability. What's more—there will be a 45 minute Q&A session with these leaders!

9:30 a.m.— Registration

10:00— Opening Plenary with Police Commissioner Fred Bealefeld, Laura Weeldreyer from Baltimore City Public School System, Mark Sissman of Healthy Neighborhoods, Valentina Ukwuoma of DPW, and Beth Strommen.

11:30 to 3:30 p.m.— Training Workshops

The full schedule will be sent out closer to the date of the event.

3:30 to 4:30— Networking Session

Admission is FREE. Come and go as you please, and attend the workshops that are most important to the work that you do. Refreshments provided throughout. PLEASE RSVP to: omaltseva@greaterhomewood.org.

—Elizabeth Condra, Environmental Training Specialist, Park Conservation and Community Outreach, Baltimore City, Department of Recreation & Parks



The Maryland Urban and Community Forest Committee of the Maryland Forestry Boards and the Department of Natural Resources officially recognize towns and cities, schools, and neighborhood associations across Maryland that are actively involved in community tree planting and care. Any community, large or small, incorporated or unincorporated, may apply for certification as a Maryland PLANT Community. Trees provide valued services to our daily lives including reducing the urban heat island effect, improving air and water quality, saving energy, enhancing property values, providing wildlife habitat, and providing aesthetic benefits.

Awards are based on the accomplishments completed by the applicant during the award year. Each year, communities can maintain their Award level, or grow to the next level. Submission deadline: December 15. Awards presented in April. Choose an award level—Bronze, Silver, Gold, or Green—appropriate for your community's level of involvement:

- ▶ **BRONZE AWARD** for single project activities or "one time events" vs. ongoing program activity.
- ▶ **SILVER AWARD** for formative programs. These communities have decided to begin an ongoing Community Forestry Program and are in the preliminary stages. Maryland Green Schools should attach a copy of your Green School application along with your PLANT application.
- ▶ **GOLD AWARD** for developmental programs. These communities are pursuing activities in addition to those in the previous two phases in order to improve the overall health of their trees and forests.
- ▶ **GREEN AWARD** for sustained programs. These are organized, fully functional programs which are funded and have full-time equivalent technical assistance. They have continuity, planning, support and a budget.

Find the PLANT application at dnr.state.md.us/forests/programs/plantinfo.html. For information or submission of your application, contact Terry Galloway 410.260.8510 or tgalloway@dnr.state.md.us.

STAR Property Management, LLC

Proudly serving our clients' rental, management, and sales needs for over 15 years...

www.RentalApartments.com
www.RentalApartments.com 

3120 St. Paul St.
 Baltimore, MD 21218
 410-235-7764



Some of our options include:

- Hardwood Floors
- Dishwasher
- Washer/Dryer
- Parking
- Exposed Brick
- Recessed Lighting
- Ceiling Fans
- In-Sink Food Disposals
- Pets Welcome
- Decks
- Fenced Yards
- Jacuzzi Tubs
- Patios
- Porches
- Central A/C and Heat



Happy Holidays from Robert's Plumbing & Heating, LLC

We would like to thank the Charles Village community
 for making this another great year at
 Robert's Plumbing and Heating.

Your local Charles Village plumbing and heating specialist for all
 your Commercial & Residential needs.

12 months same as cash with approved credit!



3120 St. Paul St.
 Baltimore, MD 21218

Call for estimates
 410-366-2260

* Same Day & 24 Hour Emergency Service *

Lic # 23466



On a beautiful Sunday afternoon, October 12, people of all ages came together to celebrate harvest-time at the Fall Gathering in Wyman Park Dell, a seasonal event sponsored by the Friends of Wyman Park Dell with funding from the Parks & People Foundation. Abell Avenue's Paul Moscott on mandolin and keyboard with vocalist Mike Witmer on guitar and harmonica as The Bluegrass Primitives set this casual scene with bluegrass music. Rachael Baird and Jessica Pegorsch of Tilt Studio rolled out its Urban Forest Project for the Season, which had been cancelled during heavy rains at the Charles Village Festival this past June. Adults and children created the Urban Forest Project logo on the lower lawn. Shane Richardson and friends organized pumpkin and face painting for kids (lower right photo). Kids delighted in playing on the straw bales, which John Spurrier brought to the Dell from the Waverly Main Street event held the previous day (top right photo). John Shields of Gertrude's at the BMA provided the refreshments for sale, Black Rock Orchard's fresh ciders & Gertrude's caramel apples. Bonnie North displayed local fresh foods available nearby. The Friends of Wyman Park Dell encourages the enjoyment of the park year round. Don't miss the next seasonal event in Wyman Park Dell will celebrate the Winter Solstice on Saturday evening, December 20.

LIKE A GOOD NEIGHBOR,
STATE FARM IS THERE.®
WE LIVE WHERE YOU LIVE.®



For your Auto, Home, Life and Health insurance needs, see State Farm Agent:

Jeff Beam, Agent
810 Gleneagles Court, Ste 204
Towson, Maryland 21286
Bus: 410-321-9770
jeff@jeffbeam.com

Specializing in Home & Auto Discount Packages

LIKE A GOOD NEIGHBOR  STATE FARM IS THERE.®

Providing Insurance and Financial Services

statefarm.com®

P02720

State Farm Insurance Companies • Home Offices: Bloomington, Illinois

04/02



Ben Frederick III, CCIM
Charles Village
Apartment Specialist



Ben Frederick Realty, Inc.

410-435-5040
www.BenFrederick.com



3213 Guilford Ave
2 Apts – Owner Quality
\$290,000



702 Homestead St – Waverly
Totally renovated – Fully Leased
\$290,000

Grace Darin's Original *Charles Villager*

The Charles Villager began as a "folksy newsletter," the personal hobby of Grace Darin, a prime mover in the creation of Charles Village. Grace set out to promote the small town spirit with items about new neighbors, new jobs, new babies, new lifestyles. Biographical sketches were its stock-in trade. By design there was no bad news in the *Charles Villager*. A citation from Mayor William Donald Schaefer credited it with "turning strangers into neighbors and neighbors into friends." Published from May 1967 until April 1977 there were a total of 33 issues, printed at uncertain intervals. Jan French has catalogued the issues and deposited a set for review at the Village Learning Place and Enoch Pratt Library's Maryland Room.

CVCA's Large Format *Charles Villager*

This summer Jan French also catalogued the large format *Charles Villager*, first published by CVCA in 1981 and continuing to today. She has deposited a set for review at the Village Learning Place and Enoch Pratt Library's Maryland Room. Following are the topics for the first 2 years. Contact Sandy Sparks, who has a stock of remaining copies, and is happy to share any extras. Following are the topics of the front page feature articles during the first 2 years of publication.

April, 1981	Property Tax Assessments
May, 1981	BBEC Spring Walk
June 1981	CVCA/HCD Check for Housing Violations
July 1981	Summer Pleasures
August 1981	Olmsted's Wyman Park— A Grand Design
September 1981	Charles Village since 1967
October 1981	Commercial Revitalization— a Better Greenmount Avenue
Nov/Dec 1981	Peabody Heights, CVCA Forerunner
January, 1982	Rowhouses, Baltimore Style
February, 1982	Neighborhood Residential Permit Parking
March 1982	City Gardening Challenge
April, 1982	Poetry in Charles Village, <i>The Pearl</i>
May 1982	The Great Baltimore Cook-Off
June 1982	Health Care— Four Village Facilities
July/Aug 1982	Charles Village Garden Contest
September 1982	Charles Village Cookbook at City Fair
October 1982	Committees Take Shape at Potluck Supper
November 1982	Supporting Public Education
December 1982	Season's Greetings/Neighborhood Churches

CHARLES VILLAGE CIVIC ASSOCIATION

The Charles Village Civic Association (CVCA) informs neighbors through our newsletter, *The Charles Villager*, and listserv messages. Through its membership and committees, CVCA supports activities like the annual Charles Village Festival to build a sense of community and improve our quality of life. We make our voices known on planning, zoning, liquor, traffic and other issues affecting the neighborhood. We help prevent crime and build community through the Neighborhood Walkers in partnership with the Charles Village Community Benefits District. We beautify the neighborhood by organizing clean-ups and plantings. We support strong schools and recreation activities for our children and youth.

CVCA Membership Benefits

Membership includes: voting rights at CVCA's General and Town Meetings; invitations to special events; Google e-mail news; a mailed subscription to *The Charles Villager* for members living beyond the neighborhood boundaries.

CVCA MEMBERSHIP FORM

September 30 marks the start of each CVCA Membership Year.

- ☐ \$15 Individual/Household ☐ \$100 Business/Institution (non-voting)
☐ \$5 Senior Citizen ☐ \$100 Life Membership
☐ \$5 Non-Resident (non-voting)

Name(s) _____
List adults to be included in the membership.

Address _____

City _____ State _____ ZIP _____

Phone (Home) _____ Phone (Work) _____

E-mail _____ Fax _____

☐ Please call me to discuss volunteer opportunities, interests, and opportunities to become actively involved in the Charles Village neighborhood.

Please make check payable to: CVCA. Complete this Membership Form and mail to:
 Brendan Coyne, CVCA Membership Secretary
 2738 Guilford Avenue, Baltimore, MD 21218



ROOFING FLAT ROOF SPECIALIST TAR & ALUMINUM ROOF COATINGS

**New Torchdown Rubber Roofs
Emergency Repairs**

Same Day Service Leak Repairs

Silicone Treatment for Brick

(443)538-2104

**Have your roof repaired, recoated
or replaced
before the winter storms arrive**

**JAMES MCDONALD ROOFING
M.H.I.C. #80778**

See our ad in the Baltimore Yellow Book



RESIDENTIAL BROKERAGE

JOHN SPURRIER

Charles Village Resident

**Congratulations to all who have
helped make Charles Village
a Great Neighborhood!**

**312 Wyndhurst Ave
Baltimore, MD 21210
410.433.7800 (office)
410.303.2400 (mobile)**



Charles Village Cookbook—A Great Holiday Gift



Sure Starters



Veggies & More



Sweet Retreats

A great holiday gift for family and friends. Pictured at left is the full-color cover of the first CVCA cookbook in 25 years, **CHARLES VILLAGE COOKS: A Taste of the Village**. Above are three of the section breaks, featuring full-color photographs by Charles Village-based and widely recognized Photographer Greg Pease, who has generously contributed the neighborhood folio of photography for the book. Over 200 recipes. The cookbook sells for \$20 at Barnes & Noble Johns Hopkins and Eddie's Charles Village Market, Charles Village stores on St. Paul Street.

Winter Clothing for Local Elementary School Children

Donate winter clothes— new or nearly-new & clean— for boys or girls, ages 5 to 12, who need winter coats, jackets, sweaters, sweatshirts, boots, gloves and mittens. Drop off at the Charles Village Community Benefits District office, 2434 St. Paul Street, Monday through Friday. Call the CVCBD office at 410.235.4411 to arrange for drop-off. For more information on this winter clothing drive, call Jeff Millard at 410.662.6073.

At least her pie can join you.

In the good old days, there were her sweet potatoes, made like nobody's business—with maple syrup and butter and little caramelized bits.

And her bird was the best! It's not the same without Grammy, but you can conjure her spirit. Eddie's has everything you need to reunite your loved ones, whether it's her green bean casserole or her scratch-baked pumpkin pie, or you opt for a store-made specialty or two. Let us help you bring back family traditions or create delightful new ones.

3117 St. Paul Street • (410) 889-1558 • Open 7 days

EDDIE'S MARKET
CHARLES • VILLAGE

Visit www.eddiesmarket.com for weekly in-store specials.

Holiday Happenings

at Harborplace & The Gallery

Great Seasonal Shopping, Dining and Entertainment!

Holiday Sing at the Harborplace Amphitheater

Saturday, December 6, 2008 * 11 a.m. – 2:30 p.m.

Sunday, December 7, 2008 * 1 p.m. – 4 p.m.

Musical merriment fills the Inner Harbor as a series of local vocal ensembles share their holiday selections.

25th Annual Merry TubaChristmas at the Harborplace Amphitheater

Saturday, December 6, 2008 * 3:30 p.m.

One of Baltimore's most unique holiday occasions! More than 250 tuba and euphonium players perform holiday favorites.

St. Nick's Pet Pics Nights at Santa's Place at Harborplace

Mondays – November 24, December 1, 8 & 15 * 6 p.m. – 9 p.m.

Santa welcomes dogs and cats to pose with him for photos.

A variety of holiday costumes are available.



HARBORPLACE & THE GALLERY

410.332.4191 | 200 East Pratt St., Baltimore, MD 21202

www.harborplace.com

General Growth Properties, Inc.