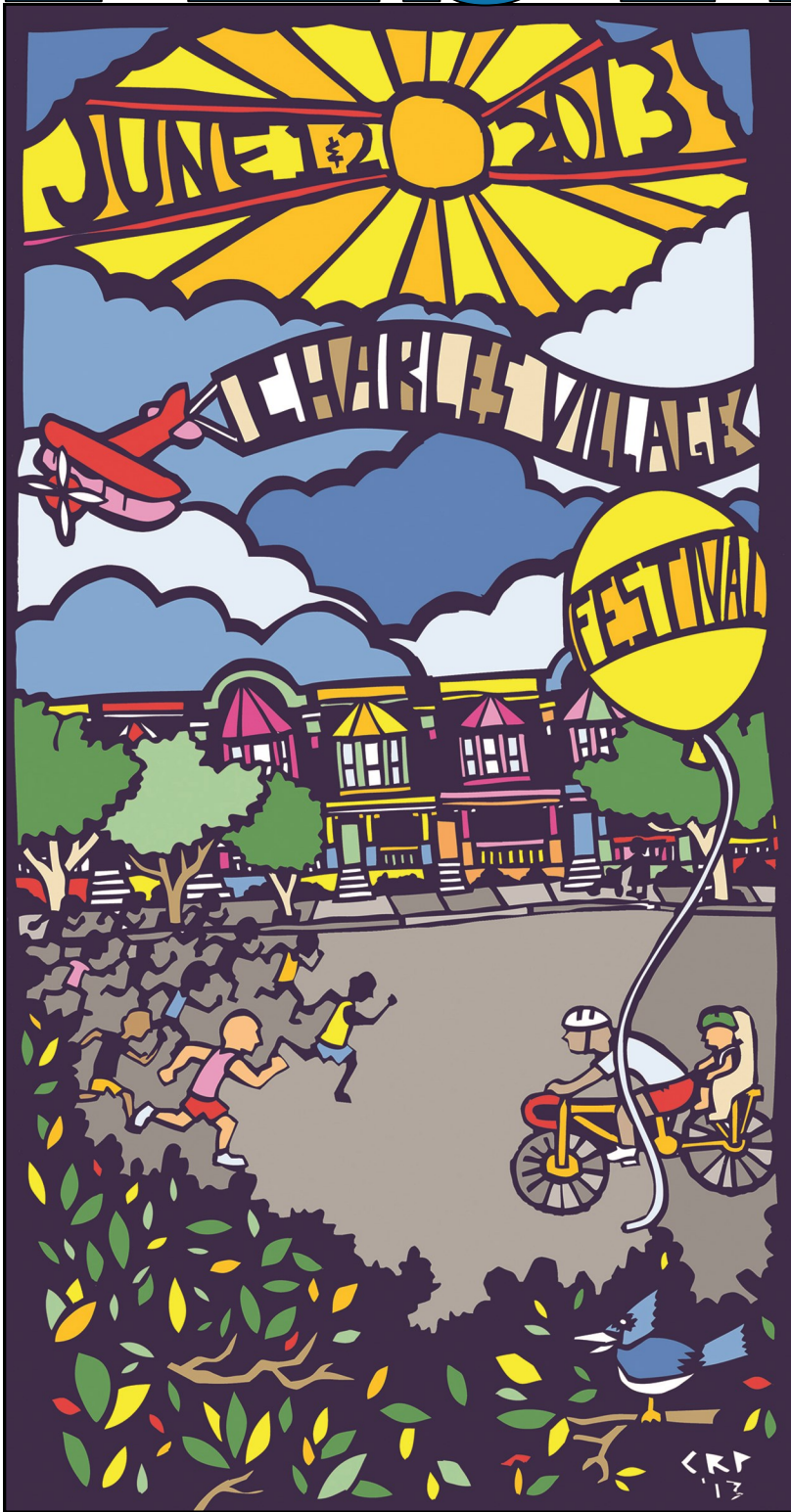


FESTIVAL '13



LIVE, FREE Music All Weekend Long...
SATURDAY, JUNE 1

8:30 AM 5K RUN

Starting point and registration/packet pickup Newton White Athletic Center on JHU Campus. Enter from West University Parkway near Homewood Field. Early Entry Fee: \$30. Race Day Fee: \$35. Students Anytime: \$20. REGISTRATION INFORMATION on page 15. Go to www.active.com and enter *Charles Village*. E-mail John Fink at CVFestival5kguy@yahoo.com.

9 AM 1K KIDS' FUN RUN

Free Fun Run for children 12 and under. Ribbons to all finishers. Register at White Athletic Center. You will be directed to the starting point of the Fun Run. Finish line is adjacent to Homewood Field. www.charlesvillagerec.org for information on 5K & 1K Kids' Races.

11 AM-9 PM THE FESTIVAL IN WYMAN PARK DELL

Featuring crafts, businesses & non-profits plus terrific food & beer/wine. See page 2 for Live Music band schedule.

11-5 VLP Activities for Children & Families. Head down to the lower dell for fun kids' activities sponsored by the Village Learning Place— Moon Bounce, Crafts, games, and prizes galore!

11:30 Music with Zoe Johnstone Stewart, Evergreen Academy of Talent Education.

2-2:30 The Adventure to the Imagi Nation. Magician David London utilizes magic, story-telling and interactive play to take children of all ages on a 30-minute journey that is both fun and educational.

5:30-9 For "Adultescents." Join the Adultlescent Effort in the lower dell for a marshmallow roast.

NEW. Charles Village Parents Activities for Children & Families.

3-4 Village Parents' Gunny Sack Races. Hop on down to the lower dell to race your neighbors. Divisions planned depending on participation— Under 6, Under 8, Under 10, Girls Under 14, Boys Under 14, Women Under 30, Men Under 30, Women 30+ and Men 30+.

SUNDAY, JUNE 2

11 AM-4 PM CHARLES VILLAGE GARDEN WALK

SOUTH of 29th Street. Buy tickets at the Garden Walk booth at the Festival. Tour more than 20 private backyard gardens. Tickets: \$15. \$12 in advance. Details on page 2.

11 AM-6 PM THE FESTIVAL IN WYMAN PARK DELL

Featuring crafts, businesses & non-profits plus terrific food & beer/wine. See page 2 for Live Music band schedule.

11-5 VLP Activities for Children and Families. Head down to the lower dell for fun kids' activities sponsored by the Village Learning Place— Moon Bounce, Crafts, games, and prizes galore! Face Painting courtesy of Artist & Craftsman Supply.

11:30 Music with Zoe Johnstone Stewart, Evergreen Academy of Talent Education.

www.charlesvillagefestival.com

The Charles Village Festival is presented by the Charles Village Community Foundation in partnership with the Charles Village Civic Association, Charles Village Recreation League, Friends of Wyman Park Dell and Village Learning Place.

Festival proceeds benefit these Charles Village community-based and volunteer-driven organizations.

For information, contact John McLane, Festival Chair, at johnpmclane@gmail.com.

FutureCare



JOHNS HOPKINS
UNIVERSITY



MedStar Union
Memorial Hospital



VEOLIA
TRANSPORTATION

BARNES & NOBLE
JOHNS HOPKINS

SAFeway
Ingredients for life.™

BaltimoreBrew



CITY PAPER

THE GREEN HOUSE® RESIDENCES
AT STADIUM PLACE
A PROGRAM OF Catholic Charities



88.1 FM YOUR NPR NEWS STATION

Charles Village FESTIVAL '13

LIVE, FREE Music All Weekend Long...

Festival '13 Main Stage Live Music

Saturday, June 1

- 11–12:30 **Sentimental Journey**— 18 piece Big Band
1–2:30 **Jazz Explosion** — Jazz Quintet featuring Carl Filipiak & Lafayette Gilchrist
3–4:30 **The US Navy Band, Country Current**— Country & Blue Grass
5–6:30 **Naked Blue Un-Plugged** — Adult Contemporary
7–9 **All Mighty Senators**— Urban Funk & Soul

Sunday, June 2

- 11–Noon **Funky Magenta**— Jazz
12:30–2 **Brooks Long and The Mad Dog No Good**— Funk, Rock & Soul
2:30–4 **The Music Workshop Presents All Rights Reserved**— Rock
4:30–6 **Technicolor Motor Home**— 10-piece Steely Dan Tribute Band

Music Workshop *Kids Rock Stage*

Saturday, June 1 & Sunday, June 2

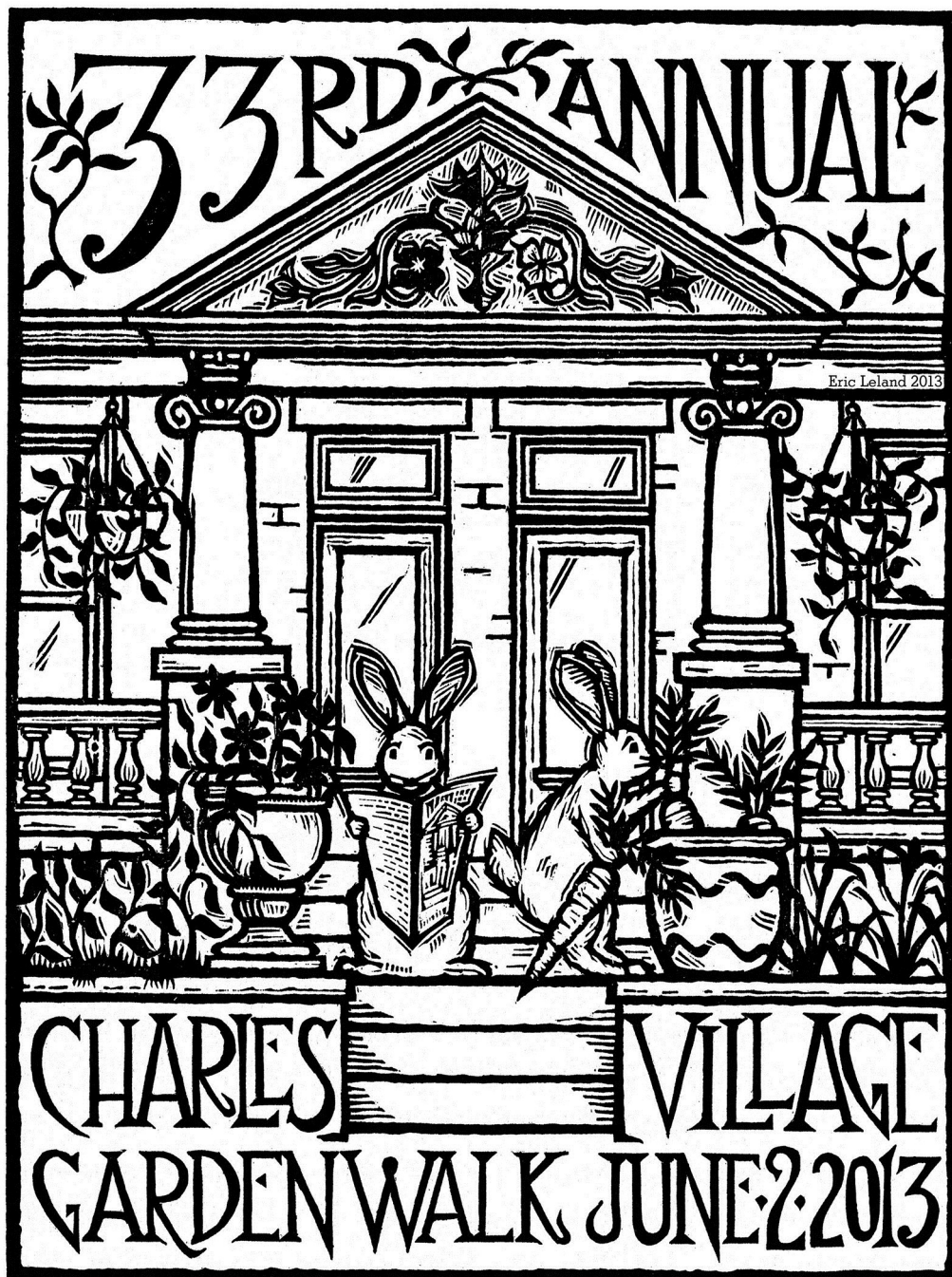
The Music Workshop presents kids bands all day between Main Stage acts.
For performers & times go to www.charlesvillagefestival.com/events.html

Festival '13 Beer, Wine & Water Sales

One very popular concession at The Charles Village Festival is the Beer & Wine Booth. We serve beer— mostly kegs of microbrews from the mid-Atlantic region— and varietal wines. We serve the draft beer in 16-ounce cups for \$4/cup from taps on the side of a refrigerated beer truck from Bond Distributing Co. The wine is served in 6-ounce glasses from the bottle for \$3/glass. Also available is bottled water for \$1/bottle.

Generously contributing again are **Well's Discount Liquors, Ed-die's Liquors, Max's on Broadway, Donna's Restaurant, Pinehurst Wine Shoppe, Dougherty's, The Charles Village Schnapps Shop, The Charles Village Pub, The Wine Source, Maxie's Pizza Bar & Grille, Peabody Heights Brewery, Charles Village Discount Liquors, and hopefully Ledo's Piz-za and Pasta, PJ's Pub, Joe Squared and Seena Wines & Liquors.** These generous contributors donate all the beer and wine to support the Festival and the four benefiting organizations— CVCA, Charles Village Recreation League, Friends of Wyman Park Dell and the Village Learning Place. Please come to the Festival and quench your thirst in a variety of ways to benefit Charles Vil-lage organizations. —Bob Welch, Chair, Beer & Wine Booth

charlesvillagefestival.com



For the second year, woodcut artist Eric Leland, former Guilford Avenue resident, has created the cover illustration for the Charles Village Garden Walk's June 2 tour program. Don't miss Eric Le-land's display of hand-printed art with the Festival '13 Crafts & Business vendors.

NEW to Festival '13—

Village Parents Add Sack Races to VLP Kids' Activities in Lower Dell

NEW for Festival '13. Join The Village Parents for Sack Races at the Charles Village Festival this year! Look for the Village Parents activities in the lower Wyman Park Dell alongside the VLP Kids' Ac-tivities. The Village Parents are organizing sack races for the young and the young at heart! A photographer will be on hand for those photo finishes.

For the third year, the VLP will feature family friendly activities and performances throughout the weekend in the lower meadow of Wyman Park Dell at the eastern end near Charles Street. Look for our big tent and follow the stone wall down the stairs from the Fes-tival '13 vendors, food and music on the Howard Street side.

Garden Walk '13, Sunday, June 2

Garden Walk '13 on Sunday, June 2 features gardens SOUTH of 29th Street to 20th Street, and between Howard Street and Guilford Avenue. Enjoy expanded Garden Walk activities. Experi-ence the tranquility of oasis backyards and learn tips from certified Master Gardeners.

On the Garden Walk, you will be amazed by what can grow in Balti-more! The large garden of a Mayors' Row mansion will be the one you talk about most. Banana trees, mandarin, several varieties of palm, gardenias, camellias, bird of paradise, espaliered trees and a myriad of other plants are spectacularly presented. See first-hand the Old Goucher Community Garden with over 50 raised beds.

This and many new or never-seen-before gardens will be on the tour proving once again that Charles Village gardeners are enthusi-astic and creative users of outdoor spaces— small and large— for decorative plants and vegetables!

Beginning at 11 AM, turn in pre-purchased vouchers at the Garden Walk Booth at the Festival site near 29th & Howard Street in ex-change for the Garden Walk Map/Guide. Gardens will be open for from 11am to 4 pm.

Advance & Day-Of Garden Walk '13 Ticket Sales

On Saturdays, May 18 & 25, buy Garden Walk '13 ticket vouchers at the Waverly Farmers Market for \$12. each. On Saturday, June 1, vouchers will be sold ONLY at the Garden Walk Booth at the Charles Village Festival for \$15. each.

Buy Garden Walk '13 Tickets Online...

<http://www.brownpapertickets.com/event/361899>

THE Charles Villager

Charles Village Civic Association

Baltimore, Maryland

Festival 2013

Barclay Rec Center Opens with Community Support

On May 18, the former Barclay Recreation Center, reopens with a ribbon cutting celebration, tours of the building, a barbecue and many activities for all ages. The event marks the transition of the building from a recreation center run by the Baltimore City Department of Recreation and Parks to a community center. The new community center will serve neighbors of all ages and operate as a partnership of Greater Homewood Community Corporation (GHCC) with Barclay Elementary/Middle School and Baltimore City Public Schools. With early support from City Council Representative Mary Pat Clarke and start-up financial support from Johns Hopkins University, a representative Community Council will oversee the center's management.

In May, oversight of the building and the project transitioned from John Bernet, former Assistant Director of Neighborhood Programs, who brought the building to opening day, to Hannah Gardi. The new Community Center Director hired by GHCC, Hannah will coordinate programming, outreach, and day-to-day operations to ensure that the space is serving the needs of greater Charles Village area residents. "A huge amount of work has gone into getting to this day," said John Bernet of the opening celebration. "This building is going to be a great asset for the area."

During the summer months, as final planning and preparation takes place, the community center building will be a site for the Parks and People Foundation's SuperKids camp, as well as a basketball camp for older kids. In late August, the center will begin to offer an increasingly diverse schedule of free and fee-for-service programming, based on proposals solicited from a wide array of community members and program providers around the city. The Center Advisory Council continues to accept programming proposals and encourages anyone and everyone to apply by requesting application guidelines from Hannah at hgard@greaterhomewood.org. Space in the building will also be available to rent for events or meetings.

Members for the Advisory Council include Jenny Heinbaugh, Principal, Barclay School; Stephanie Sterling, Charles Village Parents; Kelly Oglesbee, GHCC; Umekca Horsey, Baltimore City Schools Community Liaison; Alex Chissell, Baltimore City Schools, Teacher, Barclay School; Vanessa Francis, JHU Community Affairs; and community representatives—Emmanuel Figueroa, Harwood; Jo Ann Robinson, Abell; Andy Scott, Abell; Tamara Payne, Harwood & CVCBD; and Sandy Sparks, Charles Village. —John Bernet, GHCC



On Saturday, May 4, (left to right) Anthony Harried, Cache Eggleston, Tykala Donaldson, Angela Gibbs, Antoinette Harried and Tanya Donaldson, painted ceiling tiles to spruce up the interior of the former Barclay Rec Center on 29th Street for its opening May 18 as a community partnership with the adjoining Barclay School. All the youth live in Harwood and attend middle and high schools in the area.

Charles Street Reconstruction—Detours & Parking

During reconstruction, North Charles Street through traffic will be maintained from 25th Street to 28th Street. Charles Street from 28th Street to University Parkway will be open only to northbound local traffic and emergency vehicles. Vehicles traveling northbound on Charles Street will be diverted at 28th Street to continue north on Calvert Street. Southbound travelers will use St. Paul Street. Area east-west streets will remain open throughout the project, including the connection between Art Museum Drive and 33rd Street—except for periodic weekend closures on Charles Street between 25th and 28th Streets.

Throughout the duration of this reconstruction project (Fall 2014), businesses will remain open. There will be a decrease in unrestricted parking spots during construction. Some parking spots will remain on Charles Street for local and business parking. Residential Parking Permits (RPP) will be maintained throughout construction. Please be aware the majority of the parking during construction will be temporary back-in angle parking.

This update can also be found at the project's website, www.charlesstreetreconstruction.com.

Waverly Library Renovation Plan Raises \$6 Million Questions

My neighbor, a transplant from Boston and community planner, said "The architecture of the Waverly Library is functionally and spiritually unfit for civic use." While most people agree, the planned renovations will not cure his assessment.

The Enoch Pratt Free Library Waverly Branch, 400 E. 33rd Street, is the third busiest branch in the Pratt System, serving Baltimore's 21218 north central and north east communities along 33rd Street and the Loch Raven Boulevard/Greenmount Avenue/N. Charles Street corridors. However, Enoch Pratt's plans for renovation fall short of the community's goal to bring forward a library that will serve the area for the 21st Century. Representing the 21218 neighborhoods near the Waverly Branch, the Waverly Library Community Coalition, wants to halt the renovation to give opportunity to assess better options.

On April 11, Carla D. Hayden, Chief Executive Officer of the Enoch Pratt Free Library, presented the renovation plans at a Waverly Branch Community Meeting. The present plan calls for the renovation to close the library for more than a year and utilize the current footprint of a building that does not fully utilize the lot size. There are several alarming elements to the present plans. Her stated objectives, the plans and the \$6 million to be spent simply do not add up to common sense.

Most obvious is the community room, where the meeting was held, which serves as an election poll and is presently too small for that function. More routinely, neighborhoods do not have access to convenient and flexible gathering space for 100 or more attendees other than church halls, which often are not easily handicapped accessible. The plan to remove the small stage in the community room to increase capacity from 80 to 150 was frankly unbelievable. Removing the stage and adjoining corner closets will not double the capacity, which currently seats 65. To accommodate 150 people, there would be no space for chairs and tables. Furthermore, the plan has little flexibility of usage nor basic amenities such as audio visual equipment and counters. Importantly, there is no direct access to the public restrooms without entering the library space.

Generally, it is hard to get a sense of the scale for the renovation plans—to see how 2,000 Square Feet are added to the new plan presented at the meeting. The new exterior elevation drawing with an addition of 2,000 Sq. Ft. does not match the March 2012 interior schematic presented with a 1,050 Sq. Ft. addition.

Library Renovation, continued on page 9



CVCA MEETINGS

General Meeting

Wednesday, May 29, 7 PM
SS. Philip & James Church Hall
2801 N. Charles Street

CVCA Board Meetings

Wednesdays, June 19,
July 17 & August 21
Charles Village Community
Benefits District Office
2434 St. Paul Street

www.charlesvillage.net

CHARLES VILLAGE CIVIC ASSOCIATION

The Charles Village Civic Association represents the interests of residents in working with businesses, institutions, and government to preserve, enhance, and promote the quality of living in the historic neighborhood of Charles Village in Baltimore City.

BOARD OF DIRECTORS 2012–13

Patricia McLane, President
cvcapresident@charlesvillage.net
410.889.1807

Eric Dymond, Vice President
ericdymond@hotmail.com
301.706.6930

John Fink, Treasurer
johnfink410@yahoo.com
410.366.4157

Thomas Prevas, Secretary
tprevas@gmail.com
410.889.3496

Jennifer Erickson, Membership Sec.
membership@charlesvillage.net
410.243.3467

BOARD MEMBERS

Timothy Behnam

Matthew Compton

Brendan Coyne

Kelly Cross

Sharon Guida

John Henderson

Megan Markowski

Jeff Noll

Reginald Parker

Sarah Ritter

Sandy Sparks

John Spurrier



THE CHARLES VILLAGER

*Published five times per year by the
Charles Village Civic Association*

EDITORIAL BOARD

Sandy Sparks, Designer/Editor
srsparks@verizon.net
410.243.2156

Dawna Cobb
dawnacobb@gmail.com
410.410.366.6782

John Spurrier, Finances
charlesvillageradvertising@gmail.com
410.303.2400

Jennifer Burdick
jennifer.burdick@verizon.net
410.467.5462

Patricia McLane, President
cvcapresident@charlesvillage.net
410.889.1807

Gage Blair, Jo Ann Robinson

DISTRIBUTION

Rich Walther

Distribution Manager
rwalth@comcast.net

ADVERTISING

John Spurrier

Advertising Manager
charlesvillageradvertising@gmail.com

DEADLINE for copy and ads.
August 1 for Fall 2013 issue

THE CHARLES VILLAGER
2942 Guilford Avenue
Baltimore, Maryland 21218



President's Letter

Patricia McLane, CVCA President

Hello Charles Villagers!

Nothing kicks off the summer better than the Charles Village Festival! We have great bands, delicious food and beautiful crafts. This two day event on June 1 and 2 is a wonderful chance for you to catch up with neighbors you lost touch with over the winter months. Or, maybe you'll make some new friends while enjoying a beer or glass of wine at the Festival Beer Garden. Just remember: the Festival is located on the WEST side of the Wyman Park Dell this year due to the Charles Street Reconstruction. Look for all the fun by 29th and Howard Streets. This is great news for those of us who work the Festival all weekend since this side of the Dell has a lot more shade.

I also encourage everyone to participate in the 3rd Annual 5K Run on Saturday, June 1. The revived race now on the Homewood Campus has proven to be popular and a truly challenging race. If you don't run, don't be discouraged— all walkers, babies in strollers, and children are welcome to the 1K Fun Run. You could also volunteer to help along the route (just remember to point participants in the right direction!) Afterwards, everyone will be treated to the post-race breakfast buffet of bagels, pastries, bananas, music and, of course, a keg of beer! All runners and volunteers will also receive a race T-shirt. I unsuccessfully campaigned for pink last year, and unfortunately it looks much the same this year. What is the point of being married to the Festival Chairman if you can't wield a little spousal influence? Oh well, looks like they will NOT be hot pink again this year!

It is important for all Charles Villagers to support the Festival by attending. Not only will you show your support for our community, but for all the workers and volunteers that have spent countless hours preparing for this annual event. And remember, all proceeds from the Beer Tent— even the tip jar— support the four non-profit organizations in our neighborhood: the Village Learning Place, Charles Village Recreational League, Friends of Wyman Park Dell and the CVCA. All four of these organizations add so much to the quality of life in Charles Village that it is crucial everyone celebrate at the Festival.

Let's not forget that we are part of Baltimore City. It is equally important for community members to attend other neighborhood festivals. It is easy to remain insular and not explore Hampden, SoWeBo or Canton, but as part of a larger community, it is our

duty to support every neighborhood's Festivals. Of course, our Festival will remain the premier event!

With the Festival kicking off the summer, we have lots of other activities to look forward to such as movies in the Dell, at the Abell Open Space and on the JHU campus. Take advantage of these free events and expand your cinematic horizons! And the Waverly Farmers Market continues to be an asset to our community. This year-round market really blossoms in the summer when the majority of the produce must be LOCAL. By making a purchase here, you support the Waverly business district and Maryland farmers and businesses. Use these products to cook me a delicious dinner and I'll be over soon!

See you at the Charles Village Festival and around our community all summer!

Join a Group of Neighborhood Walkers on Patrol...

Walk with Northern District Police's Charles Village Foot Patrol Officer, William O'Donnell.

Charles Village Central Walks

First Wednesdays at 6:30 p.m. Meet at 26th & Charles Streets.

Charles Village West Walks

Thursdays at 7:30 p.m. Meet at 27th & Howard Streets.

Abell Improvement Association Walks

Thursdays at 8:30 p.m. Meet at the Abell Open Space on 32nd Street.

Old Goucher Anti-Prostitution Walks

Second & Fourth Fridays at Midnight. Meet at 2434 St. Paul Street.

Charles Village North Walks

Hosted by JHU Security
Will resume in the Fall.

Call for Festival '13 Food & Craft Vendors

Go to
www.charlesvillagefestival.com
for info & applications



Call for Festival '13 VOLUNTEERS

Contact

John McLane, Festival Chair,
at: festival@
charlesvillagefestival.org

Connect to Neighbors with Nextdoor

The Charles Village neighborhood has joined Nextdoor—a private social network for Charles Village neighbors to connect with the Charles Village community. Thousands of neighborhoods in the US are already using Nextdoor to build happier, safer places to call home. In Greater Charles Village, Old Goucher, Abell, Harwood and Remington are on Nextdoor.

People are using Nextdoor to:

- ▶ Quickly get the word out about a house break-in, water main break, fallen tree, emergency on the block
- ▶ Organize a Neighborhood Watch Group
- ▶ Spread the word about community meetings
- ▶ Ask for help keeping an eye out for a lost dog or cat.
- ▶ Learn to call that nice person down the street by their first name instead of just remembering their dog's name.

Nextdoor's Mission is to spread a sense of community through the neighborhood. Nextdoor is geography/address driven.

To join NEXTDOOR visit: **www.nextdoor.com/**

Charles Village Community Foundation Seeks Applications for Quarterly Grants

In our mission to improve the visibility and promote the desirability of living in this wonderful neighborhood, the Charles Village Community Foundation has created a grant program to help fund and encourage valuable and innovative projects throughout greater Charles Village.

The Foundation has created two categories of grants:

- ▶ Small Grants ranging from \$250 to \$1,000.
- ▶ Large Grants ranging from \$1,000 to \$10,000.

Applications for both categories are accepted and awarded on a quarterly basis. Deadlines are March 1, June 1, September 1, and December 1.

Please contact the Foundation for the grant application and guidelines at cvcfmail@gmail.com. Also, find the grant information on these websites: CVCBD www.charlesvillage.org and CVCA www.charlesvillage.net.

We encourage Charles Villagers to consider this grant program for your efforts to enhance this great neighborhood.

—John McLane, President, Charles Village Community Foundation Board of Directors

- ▶ A day at the Pimlico races
- ▶ Local and regional tours of Lexington Market and the Westside, G. Krug Ironworks, Spring Grove Hospital, Back River Water Treatment Plant, Baltimore Streetcar Museum, Cryptology Museum, Babe Ruth's Birthplace, Maryland Zoo in Baltimore; Celtic Festival
- ▶ A short hike to Round Falls at Jones Falls
- ▶ Movies
- ▶ Baseball
- ▶ Picnics in parks, lunches at area restaurants and clubs
- ▶ Pot luck lunches and dinners at RI members homes and a crab feast at nearby Peabody Heights Brewery.

The Renaissance Institute is not just about activities during summer and winter breaks. Each semester, RI offers over 50 courses. Courses are offered on Tuesdays and Thursdays from September until May, including art, history, English literature and writing, religion, current events, science, music, physical fitness and more.

There is also an opportunity to join the Renaissance Chorus. Clubs are available for members who wish to participate, such as Italian conversation, books, knitting, bridge, and scrabble.

Something else makes the Renaissance Institute unique. All classes are held on the NDMU campus, and RI members are made to feel part of the university family. Members receive a NDMU student ID card that allows use of the Loyola/NDMU Library as well as discounts to museums, concerts, and other venues that offer student discounts. RI members can also audit a course each semester in the regular undergraduate program at NDMU without charge. There is convenient on-site parking with a shuttle bus to the classroom building.

The Fall semester for RI begins on September 12. Membership is open to men and women over the age of 50. The fee for the full year (September through May) is \$385, and for one semester, the fee is \$200.

For a complete course listing, contact Linda Kuehn in the RI office at 410.532.5351. Find RI on Facebook at [\(Jo - ??\)](#) or the NDMU Web-site, www.ndm.edu/renaissance. —Carolyn Donohue, Renaissance Institute

CV Residents, Jan & Gil French Make A Difference at Renaissance Institute

The Renaissance Institute (RI) at Notre Dame of Maryland University, 4600 N. Charles, is unique when compared to the other lifelong learning programs in the Baltimore Metropolitan area.

The Renaissance program has a well-organized and on-going social component. Gil and Jan French, Renaissance members and residents of the 2900 block Guilford Avenue, work diligently throughout the year. The couple organizes a variety of activities that take place during the summer and winter semester breaks. RI members anxiously await publication of Summer-in-the-City and Winter-in-the-City activities before the end of each semester.

What have Gil and Jan planned for this summer? The list of events includes:

- ▶ Tours of Cylburn, Winterthur, and Brookside Gardens

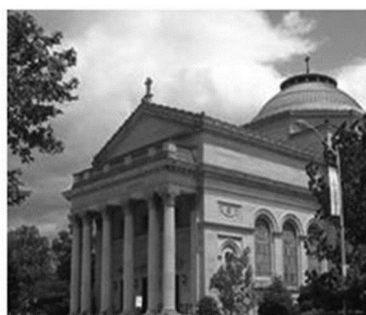


RESIDENTIAL BROKERAGE

John Spurrier

*Sponsoring Movies & Music
in Wyman Park Dell
Tuesdays in June*

38 Village Square
Baltimore 21210
410.235.4100 (office)
410.303.2400 (mobile)
jspurrier@cbmove.com



**SS. Philip & James Church
and University Parish**

2801 N. Charles St.

410-235-2294

www.philipandjames.org

Mass Schedule: Saturday Vigil Mass 4pm; Sunday 7:30, 9 & 11am, 5pm;
Confession Saturday 3pm

The Baltimore Frassati Fellowship - A Catholic fellowship for young adults in their 20's & 30's in the Baltimore area. Frassati hosts a variety of regular Catholic events open to all young adults in and around the Baltimore area. Our events are organized into three areas: prayer, service, and fellowship.

Johns Hopkins Catholic Community - The official student organization for Undergraduate and Graduate Catholic students at Johns Hopkins University. During the semester weekly activities are held at the Newman Center located in the lower level of the rectory.

The Knights of Columbus Council 14102 - A Catholic fraternal service organization, meets the 1st and 3rd Thursday of each month.

Coming this Summer:

New Bible Study Series

FREE Outdoor Movies on the North Lawn (N. Charles & 29th Sts.)

Upcoming Events:

Crab Feast July 27th 7pm - 11pm

\$40 per person or A Table of Ten for \$350

Jazz Night September 14th 8pm - Midnight

\$40 per person

Bull & Oyster Roast November 23rd 7pm - 11pm

\$40 per person or A Table of Ten for \$350



Dawna Cobb

dawnacobb@gmail.com

The kindness of strangers. Maybe you have noticed the house on the eastside of the 2700 block of St. Paul Street that has a collection of birdhouses in the front yard. Resident **Patricia Carrick** noted that a kind person left a beautiful birdhouse in her foyer with no name, so this is her way of saying “thank you.” If you were the kind person who did this, please know that Pat found the birdhouse far too lovely to add to the front yard collection, so she has hung it in her rear garden. I am a huge fan of acts of kindness. If you have benefited from an act of kindness in our little Village, please let me know for a future column.

Good citizens in Charles Village. I recently spotted **Ann Louise Stoner**, a resident of the 300 block of East 30th Street, cutting a strip of grass across the street from her house. For decades, Ann Louise has kept her end of the block neat and trim. Her neighbors are lucky to have her. Do you know a Villager who regularly does more than his or her share to keep their block looking good? Let me know!

With her husband, **John** and their kids, **Patrick and Lizzie, Beverly Fink** celebrated her birthday at the Village Learning Place where she has spent untold hours creating the garden that is the back of the VLP. Lizzie is a professional baker and she made at least five desserts in honor of her mom. Patrick lives two blocks away on Barclay Street. In attendance were many Guilford Avenue friends including **Kathy and John Rock, Patricia Owens, John and Patty McLane, Ed Hargadon, Val Kaciauskas, Sandy Sparks, Ralph and Dana Moore, Gil and Jan French and their son, Stephen, visiting from Connecticut.** Also enjoying the party were **Evelyn Cannon, Jim Casey, Sharon Guida, Patricia and Bob Welch, former Villagers Enzo and Judy Grippo.** Happy Birthday Bev!

Many in Charles Village were delighted to learn that JHU and the developer selected to build on the empty lot at 33rd and Saint Paul Streets will NOT have a grocery store. Many in the neighborhood expressed to JHU their affection for **Eddie’s Charles Village Market** at two public meetings, in a petition signed by almost 3,000 people, and through a post card mailing campaign that involved neighbors sending notes supporting Eddie’s Market to JHU President’s Ron Daniels.

An ad hoc committee dubbed the Friends of Eddie’s was lead by **Jo Ann Robinson and included John Spurrier, Dana and Ralph Moore, Councilwoman Mary Pat Clarke, Gertrude Williams, Becky Bridger** and me. The committee met with representatives from JHU and the developer, shepherded the petition and post card drives and worked with the CVCA, which also opposed a grocery store, to advocate in support of Eddie’s. What many like about Eddie’s Market is the



On the morning of April 25, neighbors of all ages gathered for the installation ceremony of the first of the Village Learning Place’s Little Free Libraries on 32nd Street by the Abell Open Space (center). At the left, Stephanie Cosgrove and her three children add Good Night Moon. Shirley Brewer (right) read from her poetry book, *After Words*, honoring Stephen Pitcairn, and then added it to the Little Library.

dedication and support of our neighborhood (and JHU) that owners **Jerry and Darlene Gordon** have displayed for so many years. Many Charles Village kids were given their first jobs there (mine was). Jerry sleeps in the apartment over the store during snow storms so the store can be open, the Gordons support all manner of community events with cheese trays and drinks, and they will welcome you by name when they see you come in the store. As I have told my law students many times, success in the legal profession and in life can be tied to the relationships we make and keep. This campaign made clear that real estate decisions must take relationships into account. As the development process goes forward, we will continue to draw on the same relationships that counted in this decision—between Eddie’s and the community, between the community and JHU, and all who want to protect the values of an independently owned and community-centered enterprise.

To those folks who were in favor of an organic grocery or food co-op at the 3200 St. Paul site, please e-mail Jerry Gordon, Eddie’s owner, with your wish list for items to stock or changes you would like to see in the store. He is planning improvements to the store and has already added a variety of gourmet and organic/local selections. E-mail jerry@eddiemarket.com.

Robert Rose of the 3000 block of Abell Avenue died April 17, two months before turning 89. Bob and his wife, Paige, lived in their Abell home since 1970. His neighbor Jo Ann Robinson reported that Bob was a merchant marine, who was away for long stretches, and not as well known in the community as Paige, who was president of the Abell Improvement Association twice and beloved for her passions that ranged from politics and wrestling to mystery books and theater. After Paige died in 2001 Bob went through a very hard and lonely period. As guarded and solitary as Paige was ebullient, Bob

often rebuffed offers of help from neighbors and members of his church family at the Cathedral of the Incarnation. A new neighbor **Terrance Boyer** took up residence behind his house at the Woodrow Apartments and struck the right chord, not only befriendng Bob but helping him get on top of medical, household and other issues that were causing him great misery. The Sunday before he died, Bob told a friend at church that he was feeling better than he ever had. Robert Rose has passed in peace, and Terrance Boyer has earned the admiration of a grateful neighborhood.

Medstar Health just filmed a commercial on the 3000 block of Guilford Avenue and **WJZ-13 News** has featured the Painted Ladies in its opening title shots. I caught a glimpse of Abell resident, **Natan Lawson walking his dog, Melvin**, on the Channel 13 news opening titles. Natan’s mom, Sylvia Cohn, is back from Brazil where she has been working for quite a while! Welcome back Sylvia. Also, **House of Cards** is filming again in Baltimore and filmed in Wyman Park Dell on the morning of May 9. I recently started watching this Netflix feature and enjoy figuring out where B’more street scenes are located.

Recently, I toured a warehouse turned artist space on Greenmount Avenue—between 26th and 27th Street. From the outside of the building you would never know about the creativity inside. On a recent sunny Saturday, wood workers and artists were busy in their studios. Across the street, residents were planting a new garden in a vacant lot, while neighbors sat on a stoop catching up. **Tamm E. Hunt** told me that an amphitheatre will be built for concerts and movies. She envisions an arts and entertainment district coming to this section of Greenmount. Let’s hope this happens!

Want to feel more connected to others in Charles Village? If so, the Charles Village neighborhood has joined **Nextdoor**. Nextdoor is the private

social network for Charles Village neighbors and the Charles Village community. Nextdoor was used to spread the news about the recent water main break on St Paul within moments. Community communication is so important. For more info, see page 4.

Guilford Avenue resident, **Gary Moore** and his wife **Lisa Moore**, own the house that was featured on the Charles Village Centennial Celebration poster. Not too long ago the daughter of the little girl on the poster visited the home, but Gary and Lisa were not home. They had made a special trip to see the house and were really moved by the memories that came back as they peeked in the windows. Gary has opened a new business, **GLS Construction Services, LLC**, a construction management and consulting firm, specializing in commercial flooring. Go to www.clgconstructionservices.com.

A big shout out to **Charlie Kelly**, 2900 block North Charles, who is out every morning talking to the men working on the Charles Street reconstruction project. Charlie is making sure everything goes as planned.

Regular readers of this column may recall my interest in hearing from Villagers who installed central air conditioning. That done, I have now moved onto solar panels. The idea of not getting an electric bill is intriguing. Have any of you taken the plunge on solar panels? If so, do you have any advice for your neighbors? Let me know and I will put it in my next column.

The Painted Ladies Contest is back! If you will be painting your house this summer, please let me know as I would like to make a short documentary-type film about the contest. See all the details on page 8.

Please send Charles Village news and personal notes for CHAT to: dawnacobb@gmail.com or 2943 N. Charles Street, Baltimore 21218.



CVCBD assists preparation for Charles Village Recreational League soccer clinics and scrimmages for area children enrolled in the league.

CVCBD Assists CV Recreational League

In November 2012, the CVCBD began assisting the Charles Village Recreational league with the preparation for their spring 2013 soccer clinic and scrimmages. Created over 20 years ago, the Rec League continues to provide recreational sports for area children, ages 4–14. The Rec League offers clinic and travel soccer in both the fall and spring seasons, as well as a small basketball program in the winter. Volunteers, including many parents of participating children, design, organize and coach the league activities.

Late last year, the CVCBD offered to help the Rec League expand its program. CVCBD Communications Coordinator, Olivia Guthrie helped reconstruct the Rec League's website and assisted in the spring registration process. Olivia also attended opening day of the league's spring soccer season to further assist in the program and to show the CVCBD's support for the league. This new relationship has proven successful and will continue.

The Charles Village Community Benefits District hopes to build stronger relationships with more community projects and programs like the Rec League. To discuss a potential community project or program, please contact Olivia Guthrie at Olivia@CharlesVillage.org or Communications@CharlesVillage.org.

FY14 Fiscal Plan Moves to Adoption

At its annual Public Hearing on the Financial Plan April 23, the CVCBD Board of Directors recommended the adoption of a \$982,285 budget for fiscal year beginning July 1. The budget is based on a surcharge tax rate of 12 cents/\$100 of assessed value of properties subject to the surcharge tax—the same rate since the CVCBD started operation in 1995.

About 24 residents and property owners attended the hearing held at Lovely Lane Church. They listened to presentations by Jason Pyeron, Board President Jennifer Erickson, Treasurer and Kirsch Jones, Vice President and Chairman of the

Program Committee. Eight attendees made public comments and several others asked questions.

Jason Pyeron summarized the 3-month planning process to develop the recommended plan and make final recommendations on the plan at the May 14 Board Meeting. The Board-approved Financial Plan must then be submitted to the City Board of Estimates for review in late May and their decision on approval.

Kirsch Jones described the Board-recommended service mix for the coming fiscal year. Highlights of the proposed programs included the following:

- ▶ Fund and continue at its FY 2013 levels as much as possible the CVCBD's Sanitation program, including operating the Rat Abatement Project, emptying and maintaining the CVCBD's 85 trash baskets as needed, sweeping sidewalks and gutters twice a week, removing allowed bulk trash weekly, removing weeds from street corners and along gutters, and assisting in the prompt removal of fall leaves.
- ▶ Fund and continue at its FY 2013 level the CVCBD's Community Safety Program including operating a 60 hour per week Safety Patrol program, supporting the Neighborhood Walkers on Patrol program, the Safety Advisory Council and its Court Watch program, issuing a weekly e-mail *Crime Alert* to the community and implementing the Camera Surveillance Grant Project.
- ▶ Fund and continue at the FY 2012 levels the CVCBD's efforts to promote and market the District, to improve public spaces and amenities.

Kirsch Jones noted that in order to divert enough funds to support continuing the 60 hour per week Safety Patrol Program, it would be necessary to discontinue printing and mailing the Annual Report and District Bulletin newsletter, which will be made available online. In addition the CVCBD will continue to communicate with residents by distributing various flyers as needed, and by enhancing and maintaining the CVCBD website, Facebook and Twitter.

Treasurer Jennifer Erickson summarized the Board-recommended financial plan for the coming fiscal year. The total expected revenue is \$982,285 (\$684,690 from the surcharge tax, \$68,000 from the JHU contribution, \$212,195 from grants and \$17,400 from contract revenue). Total anticipated expenses are \$977,790 with 94% (\$918,296) to be spent on programs. She stated that in order to financially support the proposed service mix, especially the continuation of the Safety Patrol Program at its current operational level of 60 hours per week, the Board of Directors is recommending holding staff salaries at their current levels, reducing the sanitation staff by a half-full time equivalent, eliminating the printing and mailing of the Annual Report and newsletter, and a few other cost cutting savings.

In conclusion of the presentations, Jason Pyeron stated that the CVCBD Board's recommended plan is based on community input, is beneficial to the community, sustainable and mission oriented, and that the financial plan has objective, measurable outcomes.

To read more about the Financial Plan for FY 2014, the CVCBD has posted documents related to the plan on its website: www.charlesvillage.org.

—Olivia Guthrie

Explore! Dream! Discover!

***Renaissance Institute* offers more than 50 courses over two semesters: an opportunity for thoughtful pursuits, a chance to express your creativity and enhance physical and mental health.**

Offering a unique voyage of discovery for adults 50+ since 1989, *Renaissance Institute* is also a great place to make good friends. With an active and upbeat membership, there are many occasions for continued learning and social engagement between semesters.

***Renaissance Institute* is located on the N. Charles Street campus of Notre Dame of Maryland University.**

**For membership information or the 2013 catalog,
(410) 532-5351
ndm.edu/renaissance**

ROLAND PARK DRIVING SCHOOL

The Rotunda - 711 W. 40th Street, Suite 205

- Driver Assessment
- Driver Improvement Classes
- Point System Conference
- One-on-One Mentoring
- Stick Shift Lessons

**Experienced, Skilled, Calm and Patient Teaching
For All Ages**

And especially for

“Those who think they cannot drive”

www.rpds.net
Cell: 410.215.8867

patrickfrancis@verizon.net
Office: 410.467.7737

Enjoy Wyman Park Dell in All Seasons— A Wonderland Framed by Trees

Surrounded by Art Museum Drive, Charles, 29th and Howard Streets, the 16-acre Wyman Park Dell is a public landmark, noted for its steep forested slopes and a large, sweeping lower lawn. The park serves as an urban sanctuary to enjoy year-round respite from city living. Planned and designed in 1911 by the nationally renowned Olmsted Brothers Landscape Architecture, Brookline, MA firm, Wyman Park Dell links to Wyman Park along the Stony Run from the Jones Falls to University Parkway. The Dell design is distinguished by its long lower lawn, built over the buried tributary, Sumwalt's Run. Frederick Law Olmsted, Jr. based his naturalistic design on the native trees original to the site— white oaks, American beech, tulip poplar, box elder and redbud. A recent tree survey of the park shows over 150 significantly sized trees and hundreds more native trees that are 5–30 feet tall. The sloped woodlands have remnant features of the forest classification, Oak-Beech Coastal/Piedmont Forest. One can see examples of the same forest type at Robert E. Lee Park in Baltimore County and throughout the Mid-Atlantic Region. The park is also home to a large variety of wildlife including over 35 species of birds such as hummingbirds, robins, a great-horned owl, chickadees, hawks and crows. Most of these species rely heavily on the Dell's woodland for shelter, water and food. Early morning and evening, the Dell is a place for bird-watching.

Since 2009, the Friends of Wyman Park Dell volunteers have worked on restoring the health of the forest, based on its adopted Master Plan prepared by Tom McGilloway, Mahan, Rykiel Associates. The Ecological Assessment's Native Plant list includes species of birds and wildlife to expect in a restored Oak Beech Coastal/Piedmont Forest and the fractured forest cover of the Baltimore region. Based on public input and recommendations, the Wyman Park Dell Master Plan guides the removal of invasive, non-native plants to improve safety, view corridors and aesthetics. Volunteers repeatedly remove invasives like English Ivy, Ailanthus, thistle and wild grape.

The Friends of Wyman Park Dell (FWPD) and the City's Department of Recreation and Parks (BDRP) are implementing the woodland restoration. Part-time volunteer, Duncan Stuart has removed thousands of invasive trees and plants in this habitat restoration project to restore the woods to a native bird buffet and place to raise young. BDRP routinely picks up trash and piles of debris in addition to mowing the park's extensive lawns. FWPD volunteers work on weekends to maintain the park's natural features and ensure that the park is attractive. Over the past three years, FWPD in partnership with BDRP has rehabilitated the 1970s stone comfort station to use for a well-functioning maintenance operation and a restroom open for special events. FWPD organizes monthly clean-ups in addition to organizing seasonal special events. During the Charles Village Festival on June 1 & 2, FWPD volunteers will continuously remove trash. Visit the FWPD booth and talk to volunteers. To volunteer, contact Kara Kunst, FWPD President, at kmkunst@gmail.com. Visit www.wymanparkdell.org for more information.

—Duncan Stuart, FWPD volunteer

PAINTED LADIES GREATER CHARLES VILLAGE HOUSE PAINTING CONTEST 2013



Photograph by Greg Pease Photography

**Enter the contest! Paint your house!
Win a cash prize!**

Deadline to enter the contest— 4:00 PM, December 2, 2013

Cash prize winners announced— Early 2014

1st, 2nd and 3rd prizes will be awarded for

***Best Makeover, Best Trim, Best Block, Show Piece House, Best Healthy Neighborhood Home,
Best Business, and Best Project Documentary Video***

Applications and rules are downloadable at either www.charlesvillage.org or www.greaterhomewood.org
Or, pick them up at one of these offices: Charles Village Community Benefits District, 2434 St Paul Street
Or the Greater Homewood Community Corp., 3503 N. Charles Street



The "Painted Ladies" Greater Charles Village House Painting Contest 2013
is supported by ACE Hardware
and generously funded by
the Charles Village Community Foundation

Library Renovation, continued from page 3

Next, and most important, after five years of community presentations and planning department hearings on the proposed renovation plans and revisions, area community leaders continue to question the investment of \$6 million in City capital funds in a structure inadequate to meet current, much less future needs. In February, frustrated representatives from nearby neighborhoods organized as the Waverly Community Library Coalition, chaired by Sandy Sparks. Contact srsparks@verizon.net to join the effort for a common sense compromise.

Frankly, the present plans are a huge waste of funds. Keep in mind that City bond funds roll over from year to year. This is a matter of using tax dollars wisely, not hastily, and for the renovation to be in line with community visions and master plans. Several community residents have independently reviewed the plans with professional architects and construction experts. For \$6 million, it is clear from their independent estimates that the community could have a new library with additional bathrooms and a second floor to almost double the present space. We have many options to consider.

The first thing the community must do is **ask for a halt** to the renovation, which is scheduled to move to the bid process for construction starting in 2013. Next, the community must propose the options.

The community, along with Enoch Pratt, must continue research on cost/benefits options for renovation. It is foolish to spend \$6 million tax dollars on an ill-conceived renovation and squander this opportunity. For \$6 million, the Waverly Branch should be a landmark amenity and a beacon for the future. —*Jeanne Knight, President, Old Goucher Community Association*



Tour dem Parks, Hon! Sunday, June 9

www.tourdemparks.org by May 31

Updated routes include new trails, new parks, and a new metric century! Tour dem Parks, Hon! is fully supported with rest stops and ends with a jazz barbecue picnic in Carroll Park. Proceeds support Baltimore's parks, as well as environmental, friends of parks and cycling groups. Details online.

Environmental History Lecture Series

The Baltimore Ecosystem Study: Reflecting on 15 Years of Historical Environmental Research Lecture by Geoffrey Buckley

Author of *America's Conservation Impulse: Saving Trees in the Old Line State*
Mountains of Injustice: Social and Environmental Justice in Appalachia

August 10, 1 to 3 pm

Cathedral of the Incarnation

4 E. University Parkway

Free admission, parking & refreshments

Co-Sponsored by

Baltimore City Historical Society,

Friends of Maryland's Olmsted Parks & Landscapes
Creation Care Committee, Cathedral of Incarnation

19th Annual Historic RESERVOIR HILL Garden & Home Tour

Saturday & Sunday, June 8 & 9, 11 am to 4 pm

Tickets: \$15. Good both days.

Available on tour days at Park Avenue & Reservoir Street

OR online at bit.ly/13yvrBV

Sponsors: HMRTA, BPN & Healthy Neighborhoods

Let's Get Growing!

We Sell Live Goods! Vegetable & Herbs Plants, Bulbs,
Fruit Trees, Indoor Plants, and more!

Big Savings!
\$5 OFF

Your next purchase of
\$20 or more
One per customer. Valid only
at locations listed below.
Expires 8/1/13.
SKU: CV5



ACE
The helpful place.

Everyday Low Prices!

MiracleGro Flower & Vegetables Soil, 1 cu. ft.: \$5.99

Potting Mix, 1 cu. ft.: \$8.99

ACE Green Turf Starter Fertilizer 15lb: \$16.99

Wheelbarrow, 6 cu. ft. \$54.99

Three Baltimore Locations!

CANTON ACE HARDWARE (410) 327-0404

WAVERLY ACE HARDWARE (443) 627-8893

FEDERAL HILL ACE HARDWARE (410) 244-5910

www.charmcityacehardware.com



for knowing community means everything.

Working for the community. Inspiring the community. PNC supports those who are striving to do amazing things every day. That's why we're so proud to be a part of Charles Village Festival.

Stop by any PNC Bank Branch or Call 888-PNC-Bank Visit pnc.com



for the achiever in you™

PNC BANK

©2013 The PNC Financial Services Group, Inc. All rights reserved. PNC Bank, National Association. Member FDIC



VILLAGE LEARNING PLACE

2521 St. Paul Street • 410.235.2210

Find out more about our free programs and events at www.villagelearningplace.org!

Visit our online catalog at <http://vlp.kohalibrary.com/>

VLP Library Hours

Monday	10 am– 8 pm
Tuesday	10 am– 6 pm
Wednesday	Noon– 8 pm
Thursday	10 am– 6 pm
Friday	10 am– 6 pm
Saturday	10 am– 4 pm
Sunday	Closed



Follow us on Facebook:
facebook.com/villagelearningplace



Follow us on Twitter:
twitter.com/thevlp

Liesje Gantert, Executive Director

VLP Calendar

2nd Wednesdays at the VLP— 2nd Wednesdays, 7 to 9 pm

This series features performances, lectures, cultural enrichment and the opportunity to converse with like-minded neighbors and friends each month.

May 8— *Eli Breitburg-Smith, brewer at Peabody Heights Brewery, will lead audience through a guided beer tasting and explain the complex process of brewing great beer.*

June 12— *Driving Miss Daisy. Performed by the Arena Players.*

July 10— *Jeff Reed Trio*

August 14— *Salad and Sweet Social*

Baltimore History Evenings at the VLP— Third Thursdays, 7 to 9 pm

The monthly series of presentations and discussions is presented in partnership with the Baltimore City Historical Society.

May 16— *The Grace Darin Memorial Lecture: Swine and Steam Engines: The Antebellum Struggle to Control Baltimore's Streets, presented by Mathew Crenson, Professor Emeritus, The Johns Hopkins University*

June 20— *The Baltimore Gay Community: The Early Years, presented by: John Wood, McDonogh School*

Adult Education — Mondays 5:30 to 7:30 pm

A place to ask questions and to work toward your goals with one-on-one assistance.

Senior Tea— 2nd Tuesdays, 11 am to Noon

Seniors are invited for free performances and presentations. Coffee, tea and refreshments served.

Tots Tuesdays— 1st & 3rd Tuesdays, 10:30 to 11:30 am

Toddlers & preschoolers, parents & caregivers, join us for stories, crafts and songs!

Adolescent Effort— June 1, 8 pm

Marshmallow Roast in the Wyman Park Dell

Parents' Nights Out at the VLP!— May 23, 7 pm

Mom's Night Out



On the Charles Village Garden Walk on June 2, visit the VLP's beautiful Learning Garden, an oasis maintained by dedicated volunteers lead by Bev Fink, Phyllis Jaslow, Harriet Jenkins, Carol Anderson-Austra and Patricia Owens.

VLP Thanks Many Generous Sponsors for April 20th Annual Read Between the Wines Event

MECU, Barnes & Noble Johns Hopkins,
Ober Kahler Attorneys at Law, FUSCO Financial Associates
Eastern Savings Bank. Baltimore Technology Group, Falkenhan's
Hardware, FutureCare Health and Management, Johns Hopkins Federal
Credit Union, Johns Hopkins University, Johns Hopkins University
Community Affairs. Jonathan Melnick Auctioneers & E.T. Newell, Beth
Pepper and Mark Neustadt. Rosenberg Martin Greenberg, Union Memorial
Hospital, The Wine Source, Wedding411.com

localcolorflowers

www.locoflo.com



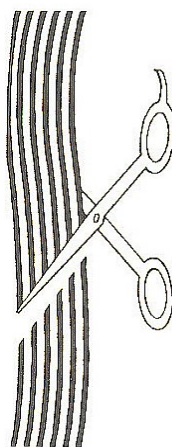
Local Color Flowers is
excited to now call
Charles Village home!

We are a unique
floral design studio using
only **locally grown** flowers.

- * Weddings and Parties
- * Single Orders
- * Subscriptions and CSA
- * Classes and Studio Hours

3100 Brentwood | 410-262-1494 | info@locoflo.com

Just
Cut
It!



Stay Cool This Summer
Get A Haircut

410-235-6614

3100 St. Paul Street

Are you good in the sack?
Have kids who are jumping beans?
Show us what you've got.

GUNNY SACK RACES

Saturday, June 1
3 to 4 pm

Charles Village Festival
Lower Wyman Park Dell

Show Up & Race
Divisions— Child to Adult
Prizes & Pride

Jennifer Burdick

The Baltimore Museum of Art

While several galleries in the museum are under renovation, visit one of the pieces that you perhaps haven't enjoyed for a while. Two of the top 10 most popular pieces are the Little Dancer Aged Fourteen by Edgar Degas and The Thinker by Auguste Rodin. What a difference in approach!

Bring the kids to the BMA on Sundays from 2–5 pm. There is always something fun to do.

May 26: *Family Tour*, 2–2:45 p.m. Sculpture Garden (weather permitting; rain activity, *Picturing Nature*)

JUNE—BMA Personalities

June 2: *Make a Surreal Self*

June 9: *Cone Sisters Puppets*

June 16: *Create a Clay Caricature*

June 23: *Make a King or Queen*

Sculpture

June 30: *Family Tour*, 2–2:45 p.m.

Famous Personalities

JULY—Contemporary

July 7: *Build an Art Car*

July 14: *Create a Colorful*

Kaleidoscope

July 21: *Play with Space Shifting*

Illusions

July 28: *Family Tour*, 2–2:45 p.m.

Contemporary Wing Highlights

AUGUST—Eye on Architecture

August 4: *Build a Classical Museum*

August 11: *Construct a Contemporary*

Gallery

August 18: *Create an Atrium*

August 25: *Family Tour*, 2–2:45 p.m.

Architectural Tour

Jazz in the Sculpture Garden

A summer tradition begins again in July. Concert-goers can choose intimate concert seating provided by the BMA or bring their own chairs or blankets for a picnic. An outdoor bar provides sandwiches and drinks for purchase. **Gertrude's Restaurant** also offers *Jazz+Dinner*, an elegant three course meal served on the terrace during the concert. Explore the connection between art and music through the BMA's pre-concert Twilight Tours at 5 p.m. 410.889.3399 for reservations.

July 6—**Louis Hayes and the Cannonball Legacy Band**, featuring Vincent Herring & Jeremy Pelt. Celebrated since the '60s for his uninhibited, hard-charging style, drummer Louis Hayes

now leads the Cannonball Legacy Band accompanied by Vincent Herring on saxophone and Jeremy Pelt on trumpet.

July 27—Paul Carr Quintet

Saxophonist Paul Carr stays true to his Southern roots with an unmistakably soulful style. The Texas tenor arrives at the BMA after numerous gigs at The White House and The Kennedy Center.

August 3—Marcus Johnson Project

Influenced by musical greats Quincy Jones and Thelonius Monk, self-taught keyboardist Marcus Johnson is acclaimed for his unique style that combines contemporary jazz with high-end hip-hop.

August 17—Jackie Ryan

"Extraordinary is the word!" said the *Los Angeles Times* about this vocalist's three-and-a-half octave range. Jackie Ryan captivates audiences with an amazing repertoire of gospel, blues, bossa nova, and Latin ballads.

August 24—Lao Tizer

Los Angeles-based keyboardist Lao Tizer creates expansive arrangements driven by an explosive mix of Afro-Cuban rhythms. Labeled as a master by *Baltimore Sun*, Tizer has performed with Isaac Hayes and Jethro Tull.

The BMA is Free. Some special exhibitions may require a fee. General Information: 443.573.1700. Box Office: 443.573.1701 or visit www.artbma.org.

The Walters Art Museum

Sondheim Artscape Prize 2013 Finalists Exhibition. This is the first year the Walters hosts the annual event celebrating the lives of Janet and Walter Sondheim. June 29–August 11.

Site Unseen: Gregory Vershbow. For the past three years, Vershbow has been photographing monuments under restoration and artworks in museum storage facilities and conservation laboratories. Large scale images of familiar work off their pedestals. July 6–September 8.

Drop-in Art Activities for Families are held on Saturdays and Sundays from 10 am to 3 pm. The May theme is *Architectural Elements*, June is *Escape to*

India, July is *Contemporary Kids*, and the summer wraps up in August with *A Horse, of Course*.

The Walters is Free. Some special exhibitions may require a fee. General Information: 410.547.9000 or visit www.thewalters.org

The Baltimore Shakespeare Factory

presents a *Season of Magic and Mayhem*. Hamlet will be performed at the Great Hall Theater at St. Mary's, 3900 Roland Avenue on July 12–13 and outdoors in the Meadow at Johns Hopkins Evergreen Museum and Library, 4545 North Charles Street, July 18–August 4. *A Midsummer Night's Dream* will open in the Meadow at the Johns Hopkins Evergreen Museum and Library August 2–18 and moves indoors to St. Mary's 3900 Roland Avenue, August 23–25. Tix at TheShakespeareFactory.com or call 410.921.WILL (9455)

Center Stage, 700 N. Calvert Street

Don't miss the season end with the *Raisin Cycle*—two plays in repertory. The Pulitzer Prize-winning *Clybourne Park* by Bruce Noris and *Beneatha's Place* by Kwame Kwei-Armah. A look at race and gentrification that takes off and is inspired by Lorraine Hansberry's *A Raisin in the Sun*. The plays will be performed in rotating repertory through June 9. Tickets: 410.332.0033 or www.centerstage.org.

Everyman Theater, 315 W. Fayette Street. The final production is *The Beaux' Strategem* by George Farquhar, adapted by Thornton Wilder and Ken Ludwig. A raucous romp through the trials and tribulations of love, money and marriage which follows the adventures of two young gents who are short on cash and long on schemes. June 5–30. Box Office: 410.752.2208 or www.everymantheatre.org.

Vagabond Players, 806 South Broadway in Fells Point, ends the season with *Private Lives* by Noel Coward. Elyot and Amanda, a divorced couple, rekindle their tempestuous relationship while honeymooning on the French Riviera with their new spouses. Noel Coward's sparkling dialogue and rapier wit create one of the sexiest, most sophisticated

comedies ever written—funny, gorgeous and oozing with style. May 31–June 30. Call 410.563.9135 or www.vagabondplayers.org.

Fells Point Corner Theatre, 251 S. Ann Street in Fells Point, concludes with David Mamet's *Glengarry Glen Ross*. Thru June 2. Tix: www.fpct.org or call 410.276.7837.

Single Carrot Theatre, 1727 N. Charles Street. Their final production of the season is *A Sorcerer's Journey: Based on the Works of Carlos Castaneda*. Carlos Castaneda's controversial writings on mysticism inspired a following. Who was the man behind these writings, and what about them launched a movement? An all-new original journey. June 12–30. Tickets 443-844-9253 or singlecarrot.com.

Theatre Project, 45 W. Preston Street. Iron Crow Theater Company will present *Act a Lady* by Jordan Harrison. When the men of a small Prohibition era town decide to put on a play dressed in "fancy-type, women-type clothes," eyebrows raise, identities explode and life and art are forever entangled. Accompanied by accordion. May 24–June 8. Tix: 410.752.8558 or www.theatreproject.org.

Baltimore Arena Players, 801 McCulloh Street in Seton Hill. *Strike Heaven on the Face* by Richard Wesley. An insightful drama of a soldier returning from Vietnam, but having difficulty adjusting to his post war role. Based on a true story. May 24–June 9. Tix: www.arenaplayersinc.com or 410.728.6500.

The Bach Concert Series at Christ Lutheran Church, 701 S. Charles Street, hosts a final concert on June 2 at 4 pm. Ticket required. BachinBaltimore.org or 410.941.9262.

For weekly updates subscribe to Greater Baltimore Cultural Alliance listserv at www.baltimoreculture.org.

E-Mail info about new art venues and productions to: jennifer.burdick@verizon.net or call 410.467.5462.

SECOND ANNUAL CHARM CITY LGBT FILM FESTIVAL

PERFORMANCE THU JUN 6, 8pm

FILMS FRI JUN 7- SUN JUN 9

\$12, \$7 mbrs per film

\$60, \$35 mbrs for weekend pass



creativealliance.org • 410 276 1651
3134 Eastern Ave, Baltimore MD 21224



Enjoy Summer Evenings In Wyman Park Dell

Movies & Music

All movies will be screened at dusk...

Bring a blanket & picnic in the Dell. Live music starts at 7 pm.

June 4 — URGH A MUSIC WAR

Track and Stream, Muscle Twin, Cursing Spree

June 11—MICHAEL JACKSON "This is It"

Expanding Man, Three Red Crowns

June 18—FESTIVAL EXPRESS

The Solicitors, American Folklore Jam Band, MacGregor Burns

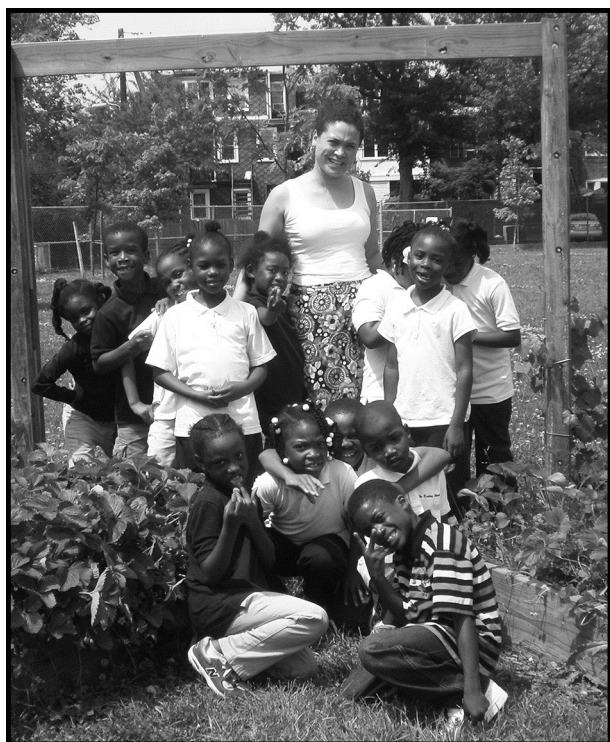
June 25—YELLOW SUBMARINE

Sea Couch, Orange Horse

Presented by the Friends of Wyman Park Dell in partnership with the Baltimore Department of Recreation & Parks

Since 2009, Volunteers Transform Barclay School Garden

The growing success of the gardens surrounding Barclay Elementary/Middle School is a tribute to dedicated support from Principal Jenny Heinbaugh, School Site Coordinator Kelly Oglesbee, Special Educator Alexandra Chissell and Extension Nutrition Educator Lisa Gonzalez, who work closely with many community organizations and neighborhood volunteers.



Barclay Garden Club students and Special Educator Alexandra Chissell proudly gather in "The Park," their transformed playground. They helped plant.

In 2009, the Maryland Port Authority removed the expanse of playground blacktop for a storm water remediation project to transform the campus with gar-

dens and trees. Volunteers planted grass and trees and also created the Reading Garden and the Veggie Raised Beds at the rear of the school.

Barclay's AmeriCorps VISTA Coordinators procured the gardening shed (a trailer container) to house Barclay and C (Community)-Green tools. They worked with the Parks and People Foundation to obtain native plants for the garden on Barclay Street which includes golden rod, cone flowers, asters, black-eyed Susans and phlox. They also received a grant for the garden on 29th Street— now graced with roses and hydrangeas and black-eyed-Susans. The Sign Garden contains plants from many neighbors, such as bee balm, daisies, spirea and lilac. A Hosta Garden enhances Barclay School's entrance with the beautiful plant-themed mosaics and blue ceramic pots.

Neighborhood volunteers weed and water as needed in the summer. They have also contributed their labor in creating a rose arbor, grape arbor and fence enclosure of the vegetable beds. Neighbors enjoy the Robin Hood Hedge roses along the alleyways and the many flowering trees behind the school.

Ms. Chissell became the leader of the popular after school Garden Club with help from neighborhood volunteers. The children helped plant flowers and vegetables, weed, mulch and water. They harvested and cooked their vegetables in electric fry pans in the classroom. The Barclay gardeners are looking forward to the opening of the Barclay Community Center and a renovated kitchen so the children can cook for their parents. A stove is needed! Donna's Chef Andy Thomas has stopped by and shared his cooking skills.

Chissell reports the children refer to the playground area as "The Park"—pretty nice!

—Beverly Fink, Barclay volunteer gardeners



Beloved former Barclay School Principal and Assistant Principal from 1969 to 1998, Gertrude Williams, who has retired nearby, found this photograph of the November 15, 1978 Groundbreaking for construction of the Barclay Recreation Center. Pictured left to right are Gertrude Williams, two City officials and City Council Representative, then and now, Mary Pat Clarke. Mary Pat has championed the reopening of the Barclay Rec Center as a community partnership with the adjoining Barclay Elementary/Middle School and nearby neighborhoods.

Barclay Rec/Community Center OPENING EVENT

Saturday, May 18, 11 AM to 2 PM
You are invited. See the transformation.

FREE ESTIMATE

RELIABLE SERVICE

Serving Charles Village,
Remington & Hampden
for over 38 years

RICKY LARICCI ROOFING & HOME SERVICES

Painting | Drywall | Siding | New Decks
Hot Asphalt Roofing | Torch-down roofing
Gutters & Downspouts | Shingle Roofing



2921 Huntingdon Avenue
410-404-0162
MHIC #98703

All types of Roof Repairs

Charles Village
Apartment Property Specialist
for 30 years.



Ben Frederick Realty, Inc.

410-435-5040

www.BenFrederick.com



For Sale: 7 Apartments



Ben Frederick III, CCIM



For Sale: 4 Bedroom House on 32nd St.

The 2013 Festival Committee

*Many Thanks to the Festival's
Dedicated Volunteer Leaders*

JOHN MCLANE, Festival Chair

JOHN MCLANE & RICH WALTHER, Fundraising

PAT WELCH, Treasurer

JEANNE KNIGHT & KATHY PINTO, Garden Walk Co-Chairs

JOHN FINK & ED HARGADON, 5K Race & 1K Kid's Race

JOHN MCLANE, Vendor Coordinator

JIM JONES, Music Coordinator

BOB WELCH, Beer/Wine Chair

SANDY SPARKS, *Charles Villager* Designer/Editor

RICH WALTHER, *Charles Villager* Distribution

SUSAN WALTHER, Public Relations

ED HARGADON, Permits

DAVID HILL, Charles Village Benefits District

STEPHANIE COSGROVE, Village Parents

LAURIE FEINBERG, Charles Village Recreation League

KARA KUNST & SANDY SPARKS, Friends of Wyman Park Dell

LIESJE GANTERT & LINDSEY HENLEY, Village Learning Place

PATTY MCLANE, Charles Village Civic Association

Look for the Thank You to All Festival '13 Volunteers and
Sponsors in the Fall 2013 issue of *The Charles Villager*.

CHARLES VILLAGE CIVIC ASSOCIATION

The Charles Village Civic Association (CVCA) informs neighbors through our newsletter, *The Charles Villager*, and listserv messages. Through its membership and committees, CVCA supports activities like the annual Charles Village Festival to build a sense of community and improve our quality of life.

We make our voices known on planning, zoning, liquor, traffic and other issues affecting the neighborhood. We help prevent crime and build community through the Neighborhood Walkers in partnership with the Charles Village Community Benefits District. We beautify the neighborhood by organizing clean-ups and plantings. We support strong schools and recreation activities for our children and youth.

CVCA Membership Benefits

Benefits include voting rights at CVCA's General and Town Meetings, invitations to special events, e-mail news and business discounts.

CVCA MEMBERSHIP FORM

September 30 marks the start of each CVCA Membership Year.

- | | |
|--|---|
| <input type="checkbox"/> \$15 Individual/Household | <input type="checkbox"/> \$100 Business/Institution |
| <input type="checkbox"/> \$5 Senior Citizen | <input type="checkbox"/> \$100 Life Membership |
| <input type="checkbox"/> \$5 Non-Resident (non-voting) | |

Name(s) _____
List adults to be included in the membership.

Address _____

City _____ State _____ ZIP _____

Phone (Home) _____ Phone (Work) _____

E-mail _____

Fax _____

- ☐ Please call me to discuss volunteer opportunities, interests, and opportunities to become actively involved in the Charles Village neighborhood.

Please make the check payable to: CVCA and send with completed Membership Form to: Jennifer Erickson, Membership Secretary, 3034 St. Paul Street, Baltimore, MD

JENSEN PLUMBING



serving Baltimore since 1976

410-467-1813

www.jensenplumbingservice.com



**University Haven
Management Company, Inc.**

www.uhmcrentals.com

FOR RENT

**STUDIO, 1 BR, 2BR, 3 BR OR
MORE APARTMENTS & HOUSES**

- Newly Renovated Units
- Many Floor Plans
- 24-Hour Emergency Maintenance
- Laundry Access
- Pets Welcome
- Secure Buildings
- Close to the University



410-800-2469

www.WEKNOWHOUSING.com



Charles Village FESTIVAL '13

Festival '13 Vendors for Crafts, Businesses, Non-Profits & FOOD...

CRAFTS & BUSINESSES

ARTFUL TREASURES
AUSTIN WAYNE DESIGNS
BALTIMORE BACK & PAIN CENTER
BATH FITTER
BEE MORE TEES
BRAINY DAY KIDS
CF VARIETY
CHARM CITY COMPANY
CHARM CITY CRAFT MAFIA
CLASSIC CLOTHING COMPANY
CLEARVIEW WINDOW & DOOR
COOL STUFF HERE
COUNTRY PRIDE FOOD
DOORS TO AFRICA
DUAL IMAGE CONSULTANTS
DUMBSMACKED
EKAA HANDS THAT CREATE
ERIC LELAND'S MANUFACTORY
FISHNECKTOFU
HANDKNITS BY LES AMIES
HERDJA
"INSPIRED" FASHIONS OF ASIA
J.S. BASTA DESIGNA

JESSIE UNTERHALTER
JUST FOR FUN
KIMPRESSIONS
KITCHEN SAVER
KLR IMPORTS
KSTAR KRAFTS
LITTLE GREEN THINGS
MADE IN FELL'S POINT
MARK COTTMAN GALLERY
MARY GARDNER
MELISSA'S JEWELRY/COOL NECKWRAPS
MID-ATLANTIC WATERPROOFING
MOONGIRL PAPER WORKS
OOOH LA LA MOSAIC TILE ART
OLD WORLD
PENDANTS BY ASHLYN
RICHARD ELLWOOD
ROSA PHOTOGRAPHY
SEW WHAT CRAFTS
SUNILA & JOAN
THE ANCIENT LINK
TURTLE JEWELRY DESIGNS
Umoja Arts & Crafts
USBORNE BOOKS & MORE

VACATION VILLAGE
VIDA DULCE IMPORTS
WHYNOTFOTO
YOU & ME SOAPS
ZETA KAPPA CREATIONS

NON-PROFIT ORGANIZATIONS

BALTIMORE ETHICAL SOCIETY
CHILDREN OF THE WORLD CO-OP
JHU PROJECTS ON CHILD DEVELOPMENT
VEGETARIAN RESOURCE GROUP

FOOD GALORE

EVERYTHING NICE— *Funnel Cakes*
FIRST STATE CATERING— *Seafood*
INDIA TANDOOR— *Indian Dishes*
MOMO THAI FOOD— *Thai Specialties*
RITA'S CONCESSIONS— *Sausages*
SHUMAN'S CONCESSIONS— *Fruit Smoothies*

—John McLane, Vendor Chair, Festival@charlesvillagefestival.org

See you for
Tuesdays with Gertie!
Many of our most popular specials
priced at \$12 each.

And don't miss
Wine on Wednesdays
All wines half price after 4pm.

GERTRUDE'S

JOHN SHIELDS CELEBRATES
REGIONAL CHESAPEAKE CUISINE
AT THE BALTIMORE MUSEUM OF ART

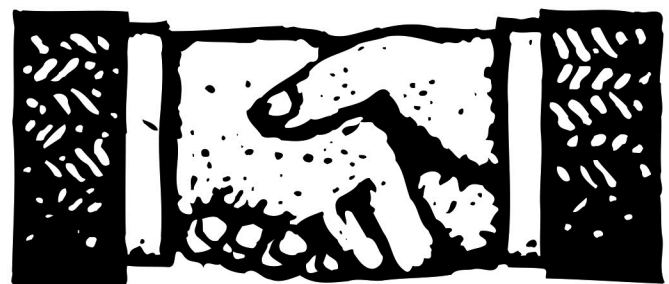
LUNCH • DINNER • WEEKEND BRUNCH
TUESDAY THRU SUNDAY

**PROUD TO BE PART OF THE
CHARLES VILLAGE COMMUNITY
SINCE 1998!**

410.889.3399

ON-LINE RESERVATIONS AT:
WWW.GERTRUDESBALTIMORE.COM

ALL FOR ONE AND ONE FOR ALL!



Thanks for declaring Eddie's to be
the only market for you!
We are proud that our neighbors joined us
in our fight to keep a big grocery store
out of the 3200 St. Paul development.
For your loyalty to shopping locally,
we promise to continue improving
our store and our services to make
Eddie's Market the best it can possibly be.

EDDIE'S MARKET
CHARLES • VILLAGE

3117 St. Paul Street • (410) 889-1558 • Open 7 Days
Visit www.eddiesmarket.com for weekly in-store specials.

Charles Village FESTIVAL '13

CV Festival 5K Race & 1K Kids' Fun Run

The Charles Village Recreational League, Johns Hopkins University and Union Memorial Hospital are pleased to sponsor the return of the Charles Village Festival 5K Race and 1K Kids' Fun Run on Saturday morning, June 1.

The Charles Village Recreational League teaches sports skills, primarily soccer and basketball, to boys and girls, ages 4–10. The League emphasizes the fun and exercise of the sports more than the competitive aspects and selects parent coaches based on their ability to relate this philosophy to the children and their parents/guardians more than relative experience in either basketball or soccer. For more information on Rec League activities, visit www.charlesvillagerec.org.

1K Kids' Fun Run, June 1

Free 1K Fun Run for children 12 & under. Ribbons to all finishers.

Start Time: 9:00 AM

Register on site in front of the White Hall Gym on JHU Homewood Campus. Enter from W. University Parkway on the south side of Homewood Field. Participants will be directed to the starting point of the 1K Fun Run on the JHU campus. For information about the 1K Kids' Fun Run, contact John Fink at CVFestival5kguy@yahoo.com.

5K Race on Saturday, June 1

Starting Point & Registration/Package pickup in front of the Newton White Athletic Center on JHU Homewood Campus. Enter from W. University Parkway on the south side of Homewood Field. Park on nearby streets.

Start Time: 8:30 AM

Course: This loop course starts and finishes adjacent to Homewood Field with a course through the JHU campus and along lovely, shaded San Martin Drive.

Awards: Top three male and female finishers

Age Group Awards: 15 and under, 15–19, 20–29, 30–39, 40–49, 50–59, 60+

Random Awards: Numerous random prizes will be raffled. Must be present to win.

Amenities: Collectible, commemorative T-shirt to all 5K entrants. Splits at one and two mile marks. Medical support provided. Refreshments & awards ceremonies at JHU.

By May 30— register online at active.com

5K Race Registration & Packet Pickup:

Registration & Packet pickup will be held Friday, May 31 from Noon to 6 PM at the Falls Road Running Store, 6247 Falls Road, Baltimore 21209, and on Saturday, June 1, beginning at 7 AM in front of the White Hall Gym on the JHU Homewood Campus.

For more information on the 5K Race, please call Jim Adams at Falls Road Running Store at 410.296.5050. —John Fink & Ed Hargadon
airs, 5K Race & 1K Kids' Run

Charles Village 5K Race, June 1 ENTRY FORM

Fee: ☐ \$30 by May 30 ☐ \$35 Race Day
☐ Students \$20 Anytime

Name _____

Sex M____ F____ Age____

Address _____

City _____ State____ Zip____

Phone _____

E-mail _____

T-Shirt Size S____ M____ L____ XL____

T-Shirts for 5K participants only

Release & Waiver

In consideration of the acceptance of my entry, I, for myself, my executors, administrators, and assignees do hereby release and discharge the Charles Village Recreational League Inc., The Charles Village Community Foundation, Inc., Johns Hopkins University, Baltimore City, the Race Director, all sponsors and any agents as named within this release and waiver. This release covers all claims of damages, demands, and actions whatsoever in any manner arising out of my participation in the Charles Village 5K Race or the 1K Kids' Fun Run. I attest and verify that I have full knowledge of the risks involved in this event and that I am physically fit and sufficiently trained to participate in this event.

Signature

Signature of parent or guardian required if participant is under 18 years of age.

Date _____

Make checks payable to: **CVCF**

Mail to: Charles Village 5K Race

c/o Falls Rd Running Store

6247 Falls Road, Baltimore MD 21209

Join the CVCA, shop locally & SAVE!

Become a CVCA Business Member!

Contact Jennifer Erickson,
CVCA Membership Secretary:
membership@charlesvillage.net
www.charlesvillage.net

For discounts offered, you must present your CVCA Membership Card at the time of purchase. Offers subject to change without notice.

CVCA Works for You!

- ▶ Land Use— Zoning & Liquor Board Hearings
- ▶ Residential Permit Parking Areas RPP 12/12A & RPP 37
- ▶ Greening— Tree Stewards
- ▶ Beautification— Charles Village Garden Club
- ▶ Safety— Neighborhood Walkers
- ▶ Sanitation
- ▶ Traffic Calming
- ▶ *The Charles Villager* newsletter
- ▶ *Charles Village Cooks: A Taste of The Village* cookbook



Now is the time for area businesses and non-profits...

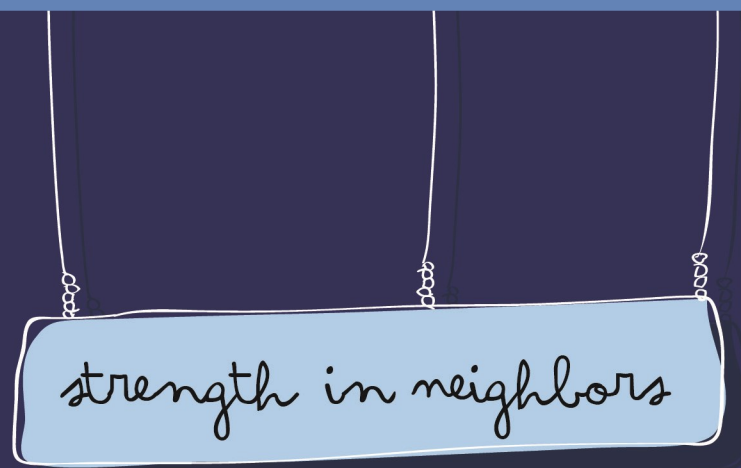
JOIN or RENEW Membership in CVCA.

Non-Profit Members

Children of the World, Co-Op, Inc.
Greater Homewood Community Corporation
Franciscan Center

CVCA Business Members

A+A Lead Paint Inspections
Auto Stop Limited
B1 Korean BBQ Restaurant
Baltimorean Apartments
Burs and Garrett Physical Therapy Association
Dominion Ice Cream
Donna's
Eddie's Market
ezStorage
Just Cut It
Law Office of John C.M. Angelos
Maxies Bar & Grille
Niwana
NSAA Now Therapeutic Massage
Randall & Sonnier, LLC
Seena Wine & Liquor
Sweet 27
Tamber's



Johns Hopkins proudly supports the Charles Village Festival.
We couldn't ask for better neighbors.

We are looking forward to another great festival!

JOHNS HOPKINS
UNIVERSITY



MedStar Union
Memorial Hospital
The Curtis National Hand Center



Last year we saved more than 6,000 hands.

The Curtis National Hand Center

Designated by Congress as a national center for hand treatment, we're constantly finding new ways to restore an ability many of us take for granted. We treat everything from arthritis to the most severe hand injuries and deformities with advanced surgical and nonsurgical techniques. If you suffer from hand or arm pain, numbness or injury, call the experts at **877-UMH-HAND**.

MedStarUnionMemorial.org/Hand

Knowledge and Compassion
Focused on You