

# 25<sup>TH</sup> STREET STATION



URBAN DESIGN & ARCHITECTURE REVIEW PANEL PRESENTATION  
OCTOBER 10<sup>TH</sup>, 2013



# 25TH STREET STATION

BALTIMORE, MARYLAND



Date: 10/09/2013  
Scale: 1"=20'

ILLUSTRATIVE SITE PLAN



**Colbert Matz Rosenfelt, Inc.**  
Civil Engineers • Surveyors • Planners



**Bowman**  
CONSULTING



**Colbert Matz Rosenfelt, Inc.**  
Civil Engineers • Surveyors • Planners

# 25TH STREET STATION

BALTIMORE, MARYLAND





**Colbert Matz Rosenfelt, Inc.**  
Civil Engineers • Surveyors • Planners

# 25TH STREET STATION

BALTIMORE, MARYLAND



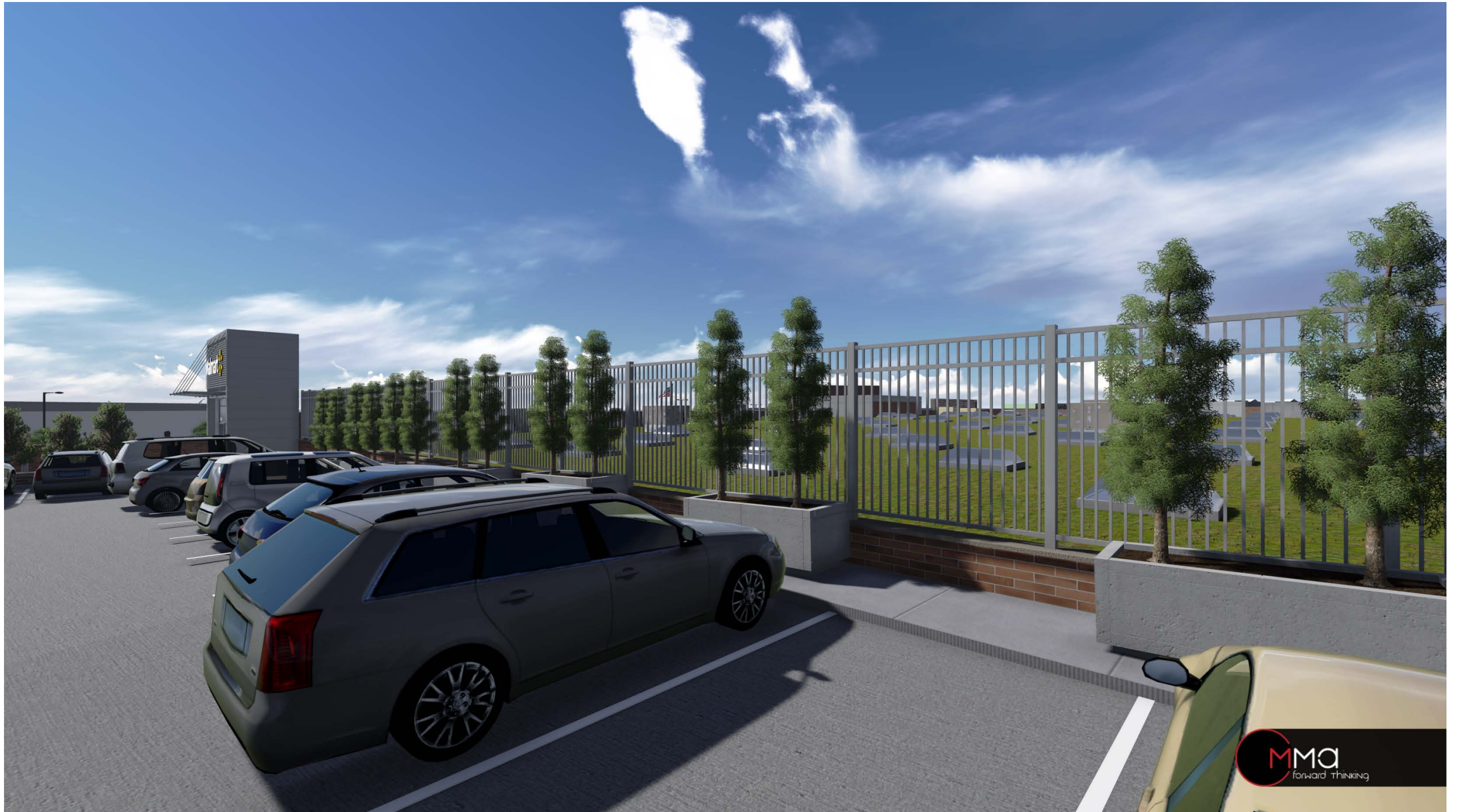


**Colbert Matz Rosenfelt, Inc.**  
Civil Engineers • Surveyors • Planners

# 25TH STREET STATION

BALTIMORE, MARYLAND





**Bowman**  
CONSULTING

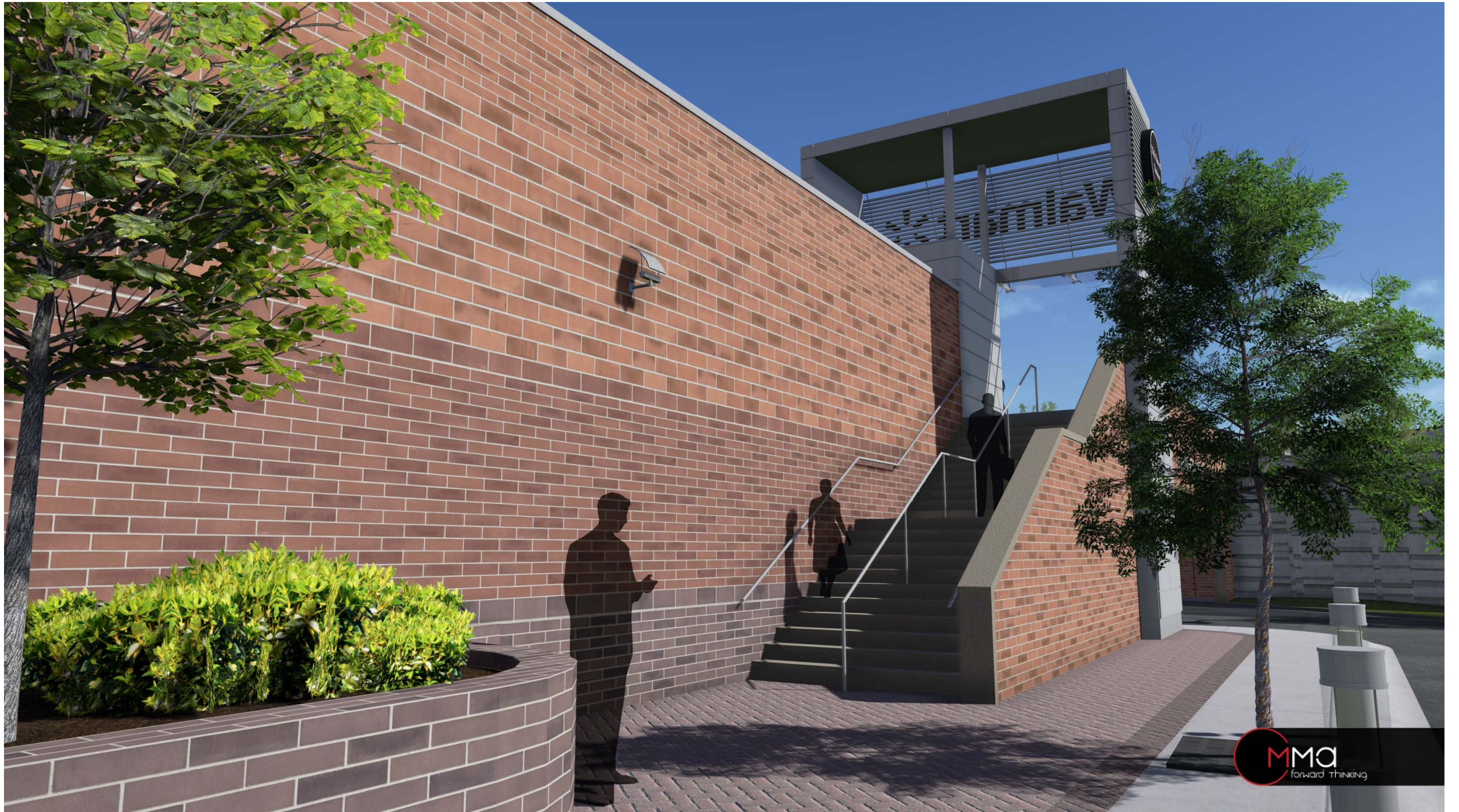


**Colbert Matz Rosenfelt, Inc.**  
Civil Engineers • Surveyors • Planners

# 25TH STREET STATION

BALTIMORE, MARYLAND





**Bowman**  
CONSULTING

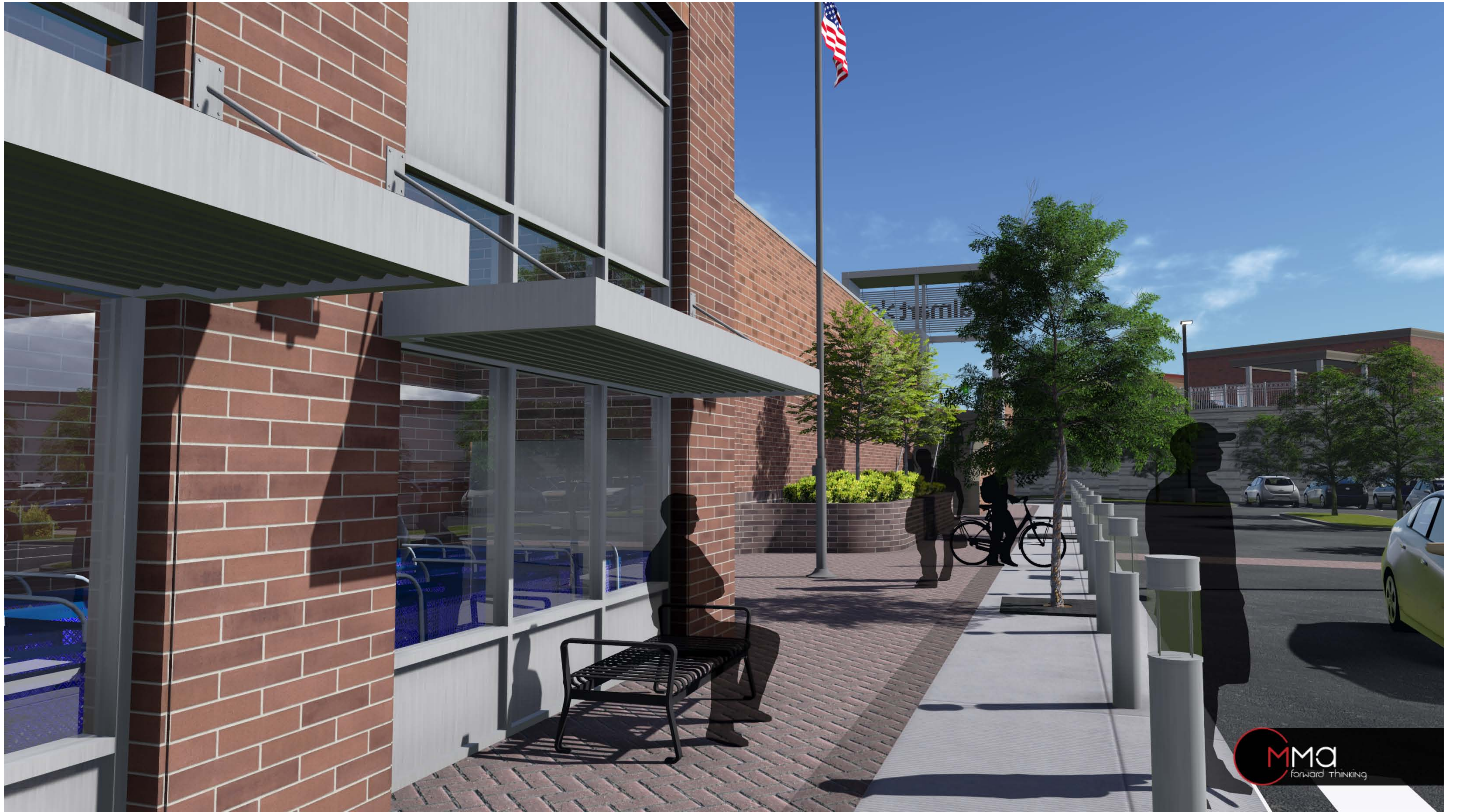


**Colbert Matz Rosenfelt, Inc.**  
Civil Engineers • Surveyors • Planners

# 25TH STREET STATION

BALTIMORE, MARYLAND





**Bowman**  
CONSULTING



**Colbert Matz Rosenfelt, Inc.**  
Civil Engineers • Surveyors • Planners

# 25TH STREET STATION

BALTIMORE, MARYLAND





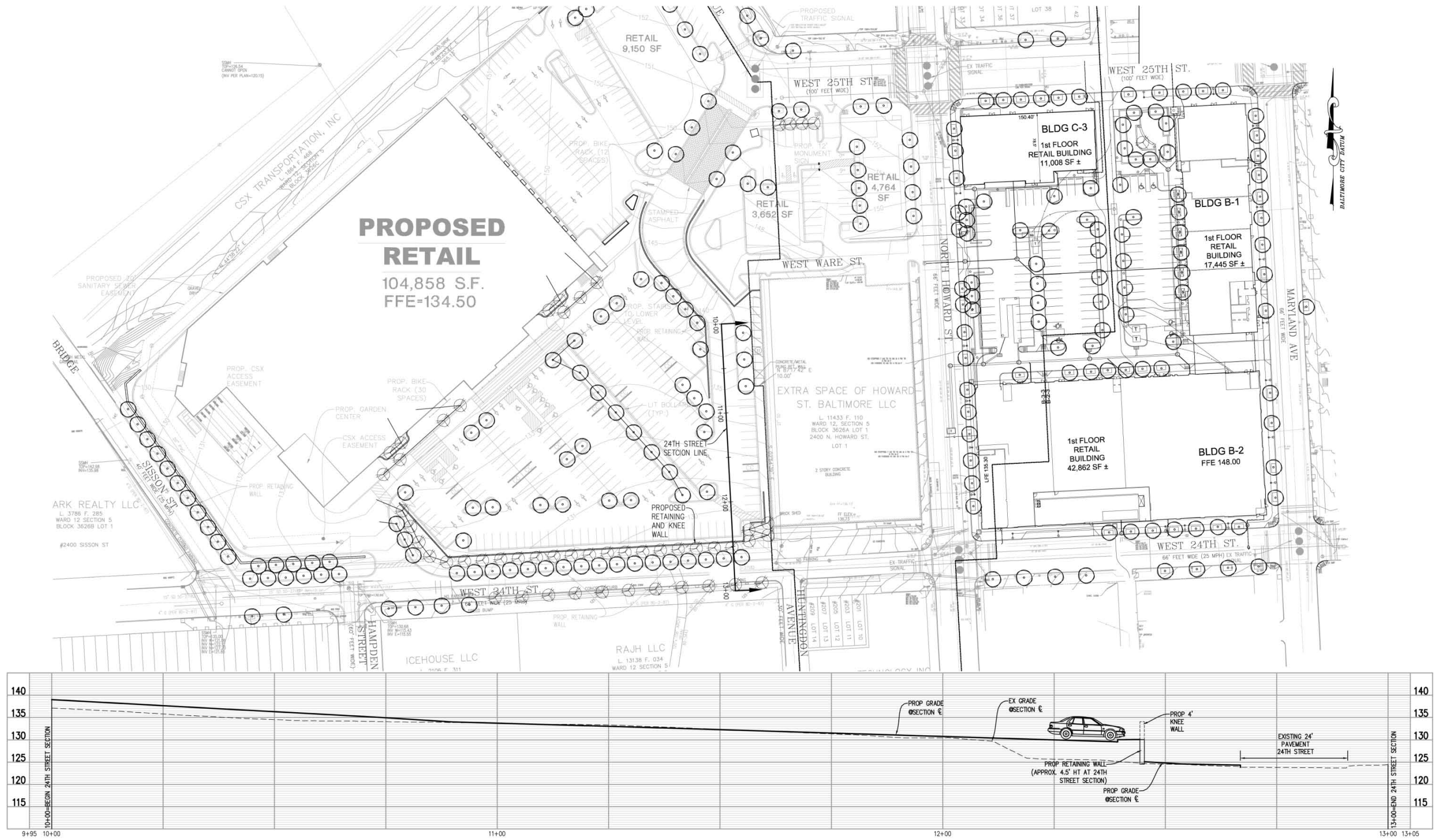


**Colbert Matz Rosenfelt, Inc.**  
Civil Engineers • Surveyors • Planners

# 25TH STREET STATION

BALTIMORE, MARYLAND





**Colbert Matz Rosenfelt, Inc.**  
Civil Engineers • Surveyors • Planners

# 25TH STREET STATION

BALTIMORE, MARYLAND





**Bowman**  
CONSULTING



**Colbert Matz Rosenfelt, Inc.**  
Civil Engineers • Surveyors • Planners

# 25TH STREET STATION

BALTIMORE, MARYLAND





**Colbert Matz Rosenfelt, Inc.**  
Civil Engineers • Surveyors • Planners

# 25TH STREET STATION

BALTIMORE, MARYLAND





**Bowman**  
CONSULTING



**Colbert Matz Rosenfelt, Inc.**  
Civil Engineers • Surveyors • Planners

# 25TH STREET STATION

BALTIMORE, MARYLAND





**Bowman**  
CONSULTING



**Colbert Matz Rosenfelt, Inc.**  
Civil Engineers • Surveyors • Planners

# 25TH STREET STATION

BALTIMORE, MARYLAND





**Bowman**  
CONSULTING

**Colbert Matz Rosenfelt, Inc.**  
Civil Engineers • Surveyors • Planners

## 25TH STREET STATION

BALTIMORE, MARYLAND





**Bowman**  
CONSULTING



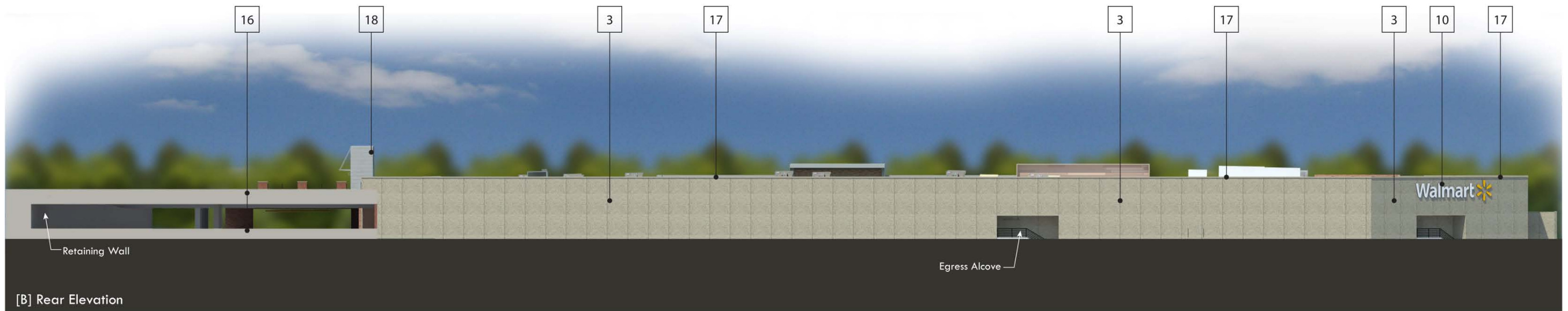
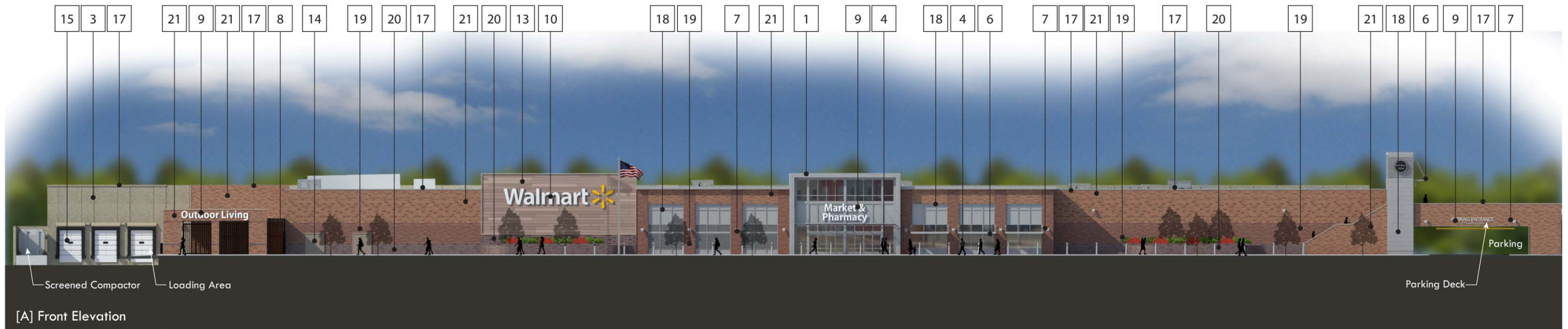
**Colbert Matz Rosenfelt, Inc.**  
Civil Engineers • Surveyors • Planners

## 25TH STREET STATION

BALTIMORE, MARYLAND







**Elevation Key Notes:**

1	Anodized Panel	11	Open Metal Framing System
2	Arch. Block or Arch. Precast Concrete	12	Planter Box
3	Precast Concrete Panel	13	Fiber Cement Panel
4	Glass Storefront System	14	Painted Hollow Metal Door
5	Spandrel Glass Storefront System	15	Aluminum Roll Down Door
6	Metal Awning System	16	Concrete Parking Structure
7	Accent Lighting	17	Painted Metal Coping
8	Ornamental Fence	18	Centria Metal Panel
9	Directional Sign	19	Quik-Brik (Sandlewood)
10	Illuminated Sign	20	Quik-Brik (Marose)
		21	Quik-Brik (Lawson Blend)

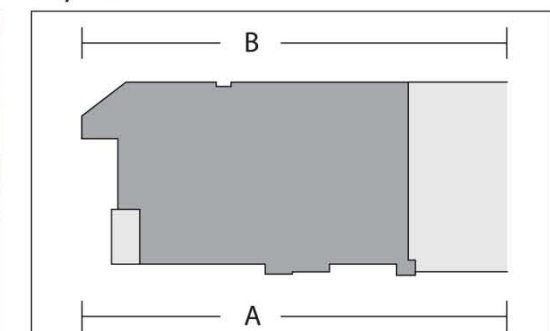
**Perspective of Front:**



**Perspective of Rear:**



**Key Plan:**



**Massa Montalto Architects, PC**  
3297 Route 66 | Neptune, NJ 07753

P: 732.918.2300 | F: 732.918.2351 | [www.mma-architects.com](http://www.mma-architects.com)

DESIGN REPRESENTATION ONLY NOT FOR CONSTRUCTION  
The building images shown are a representation of the current design intent only. The building images may not reflect variations in color, tone, hue, tint, shading, ambient light intensity, materials, texture, contrast, font style, construction variations required by building codes or inspectors, material availability or final design detailing.

**Elevations [Front & Rear]**

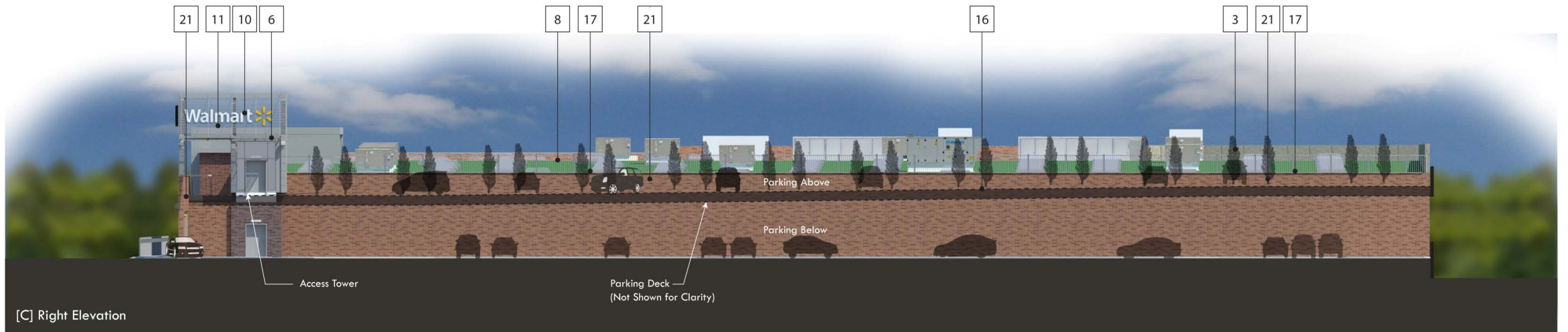
25th Street Station Development

| Submission: March 20, 2013 |

25th & Howard St.  
Baltimore, MD



**A1.1**



[C] Right Elevation



[D] Left Elevation

Elevation Key Notes:

1	Anodized Panel	11	Open Metal Framing System
2	Arch. Block or Arch. Precast Concrete	12	Planter Box
3	Precast Concrete Panel	13	Fiber Cement Panel
4	Glass Storefront System	14	Painted Hollow Metal Door
5	Spandrel Glass Storefront System	15	Aluminum Roll Down Door
6	Metal Awning System	16	Concrete Parking Structure
7	Accent Lighting	17	Painted Metal Coping
8	Ornamental Fence	18	Centria Metal Panel
9	Directional Sign	19	Quik-Brik (Sandlewood)
10	Illuminated Sign	20	Quik-Brik (Marose)
		21	Quik-Brik (Lawson Blend)

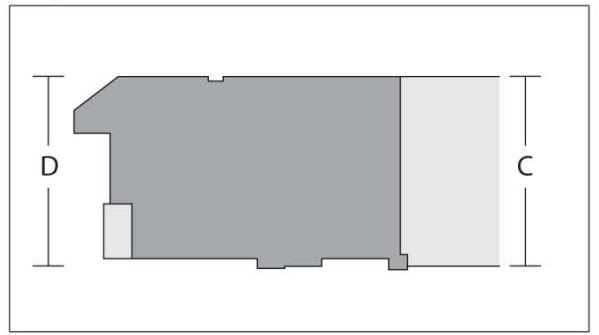
Perspective of Right:



Perspective of Left:



Key Plan:



Massa Montalto Architects, PC  
3297 Route 66 | Neptune, NJ 07753

P: 732.918.2300 | F: 732.918.2351 | www.mma-architects.com  
*DESIGN REPRESENTATION ONLY NOT FOR CONSTRUCTION*  
The building images shown are a representation of the current design intent only. The building images may not reflect variations in color, tone, hue, tint, shading, ambient light intensity, materials, texture, contrast, font style, construction variations required by building codes or inspectors, material availability or final design detailing.

Elevations [Right & Left]  
25th Street Station Development

| Submission: March 20, 2013 |

25th & Howard St.  
Baltimore, MD



A1.2

END OF PRESENTATION